



CHELAN FIRE AND RESCUE



Emergency Response Report

November 2014



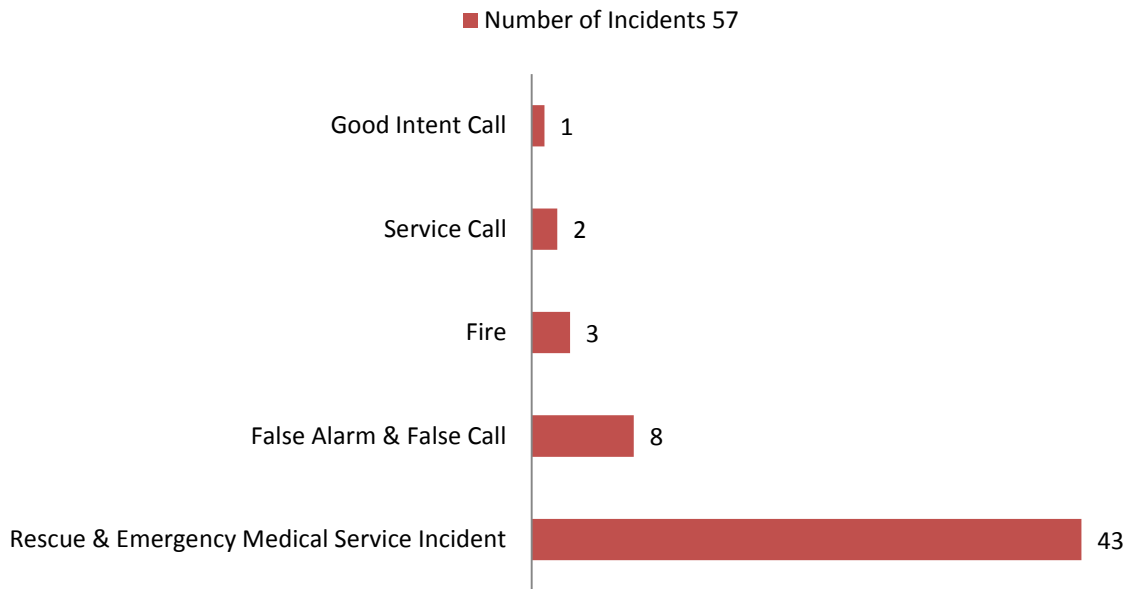
Incident Types November 2014

■ Number of Incidents 57

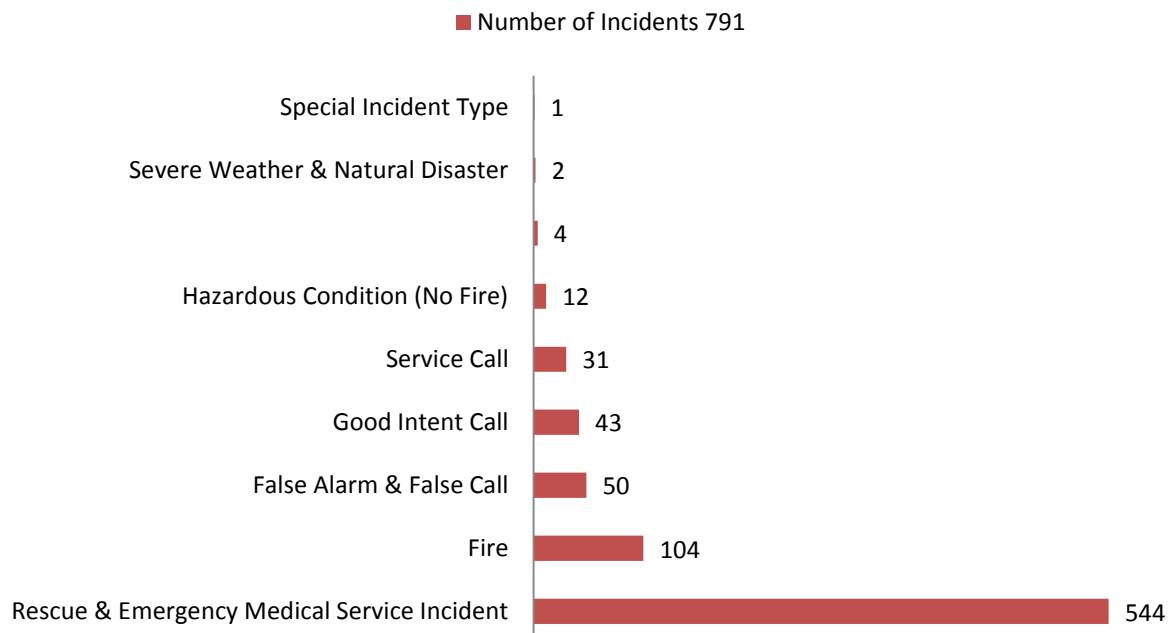




Incident Types by Group November 2014



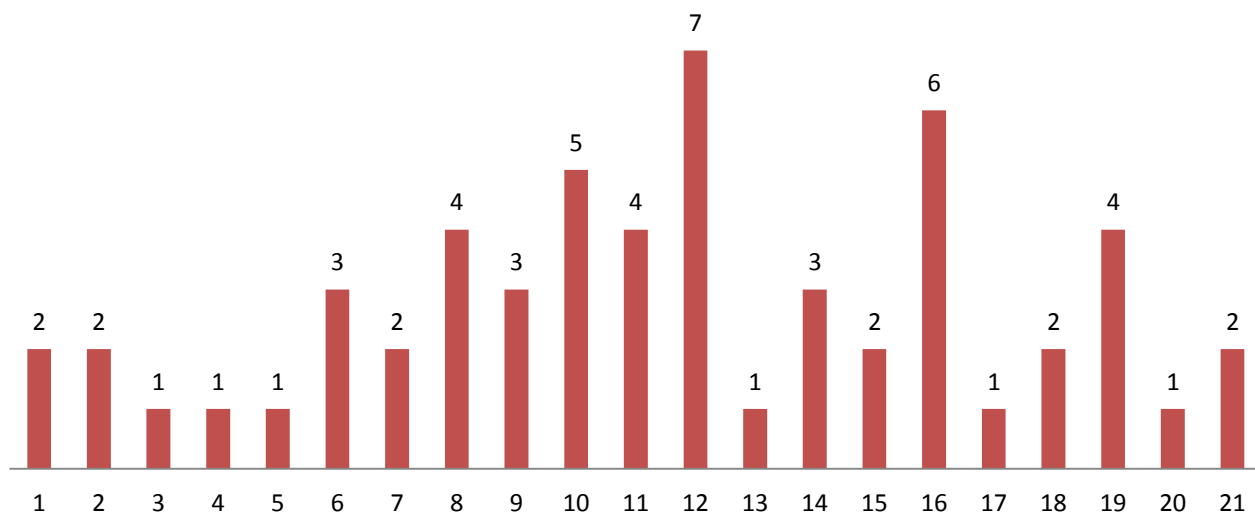
Incident types by Group Year To Date





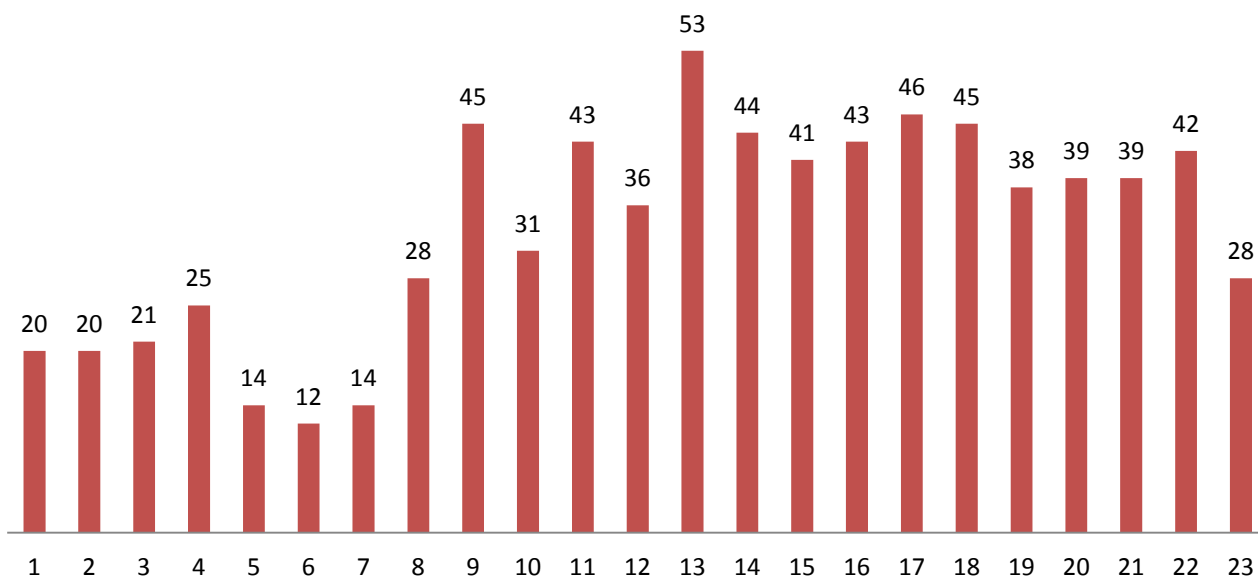
Incident by Hour of the Day November 2014

■ Total Incidents 57



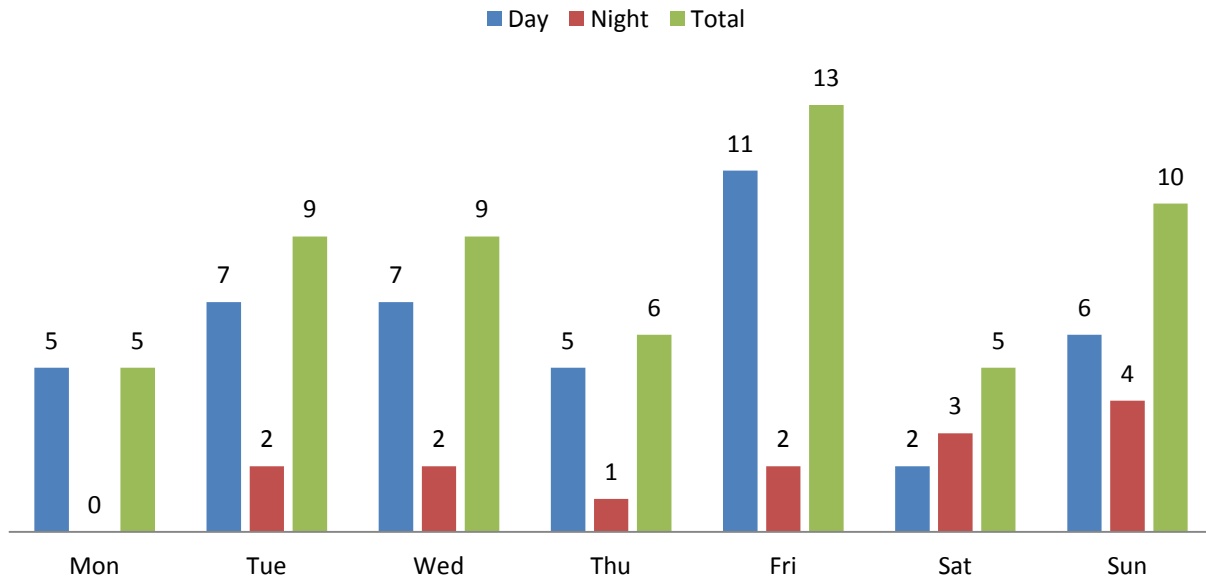
Incident Hour of the Day Year To Date

■ Total Incidents 791

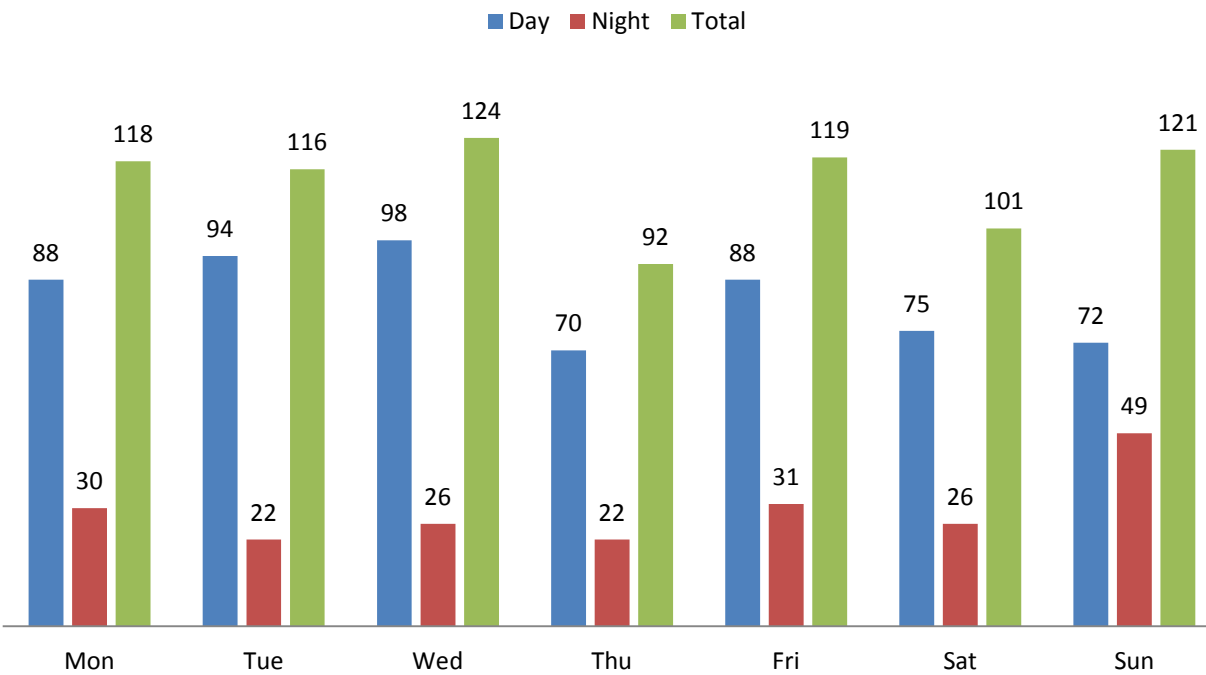




Day vs. Night Calls by Day of the Week November 2014

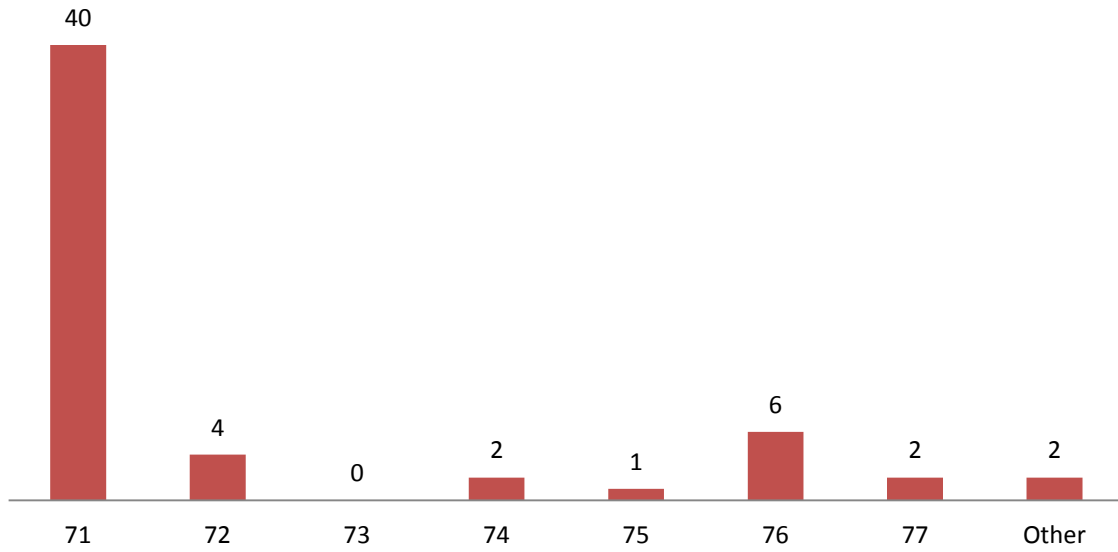


Day vs. Night Calls by Day of the Week Year To Date

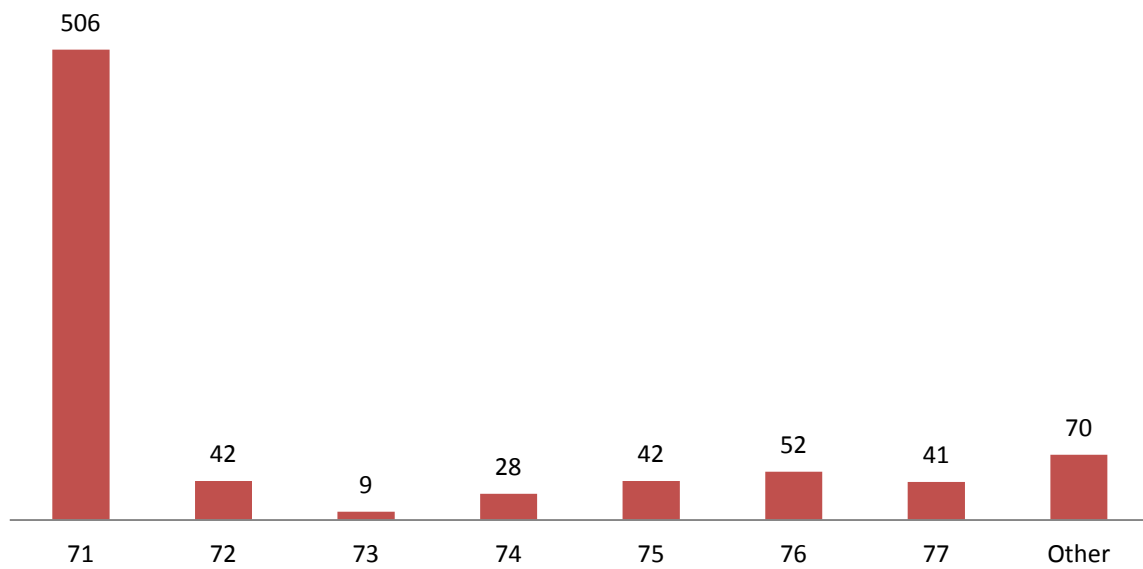




Incident by First Due Area November 2014

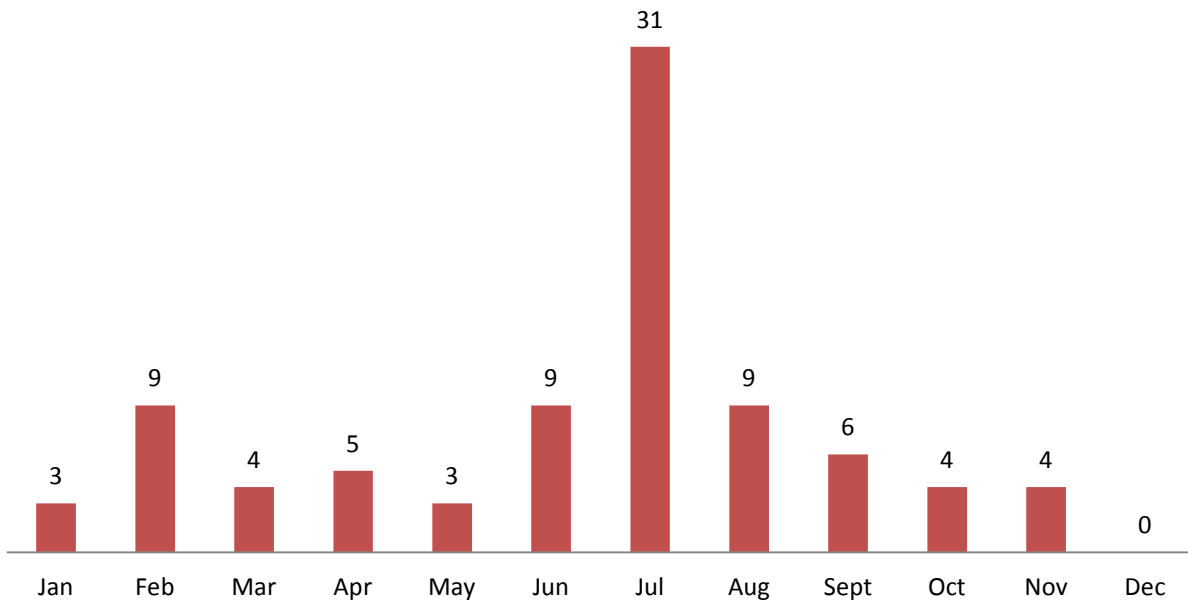


Incidents by First Due Area Year To Date

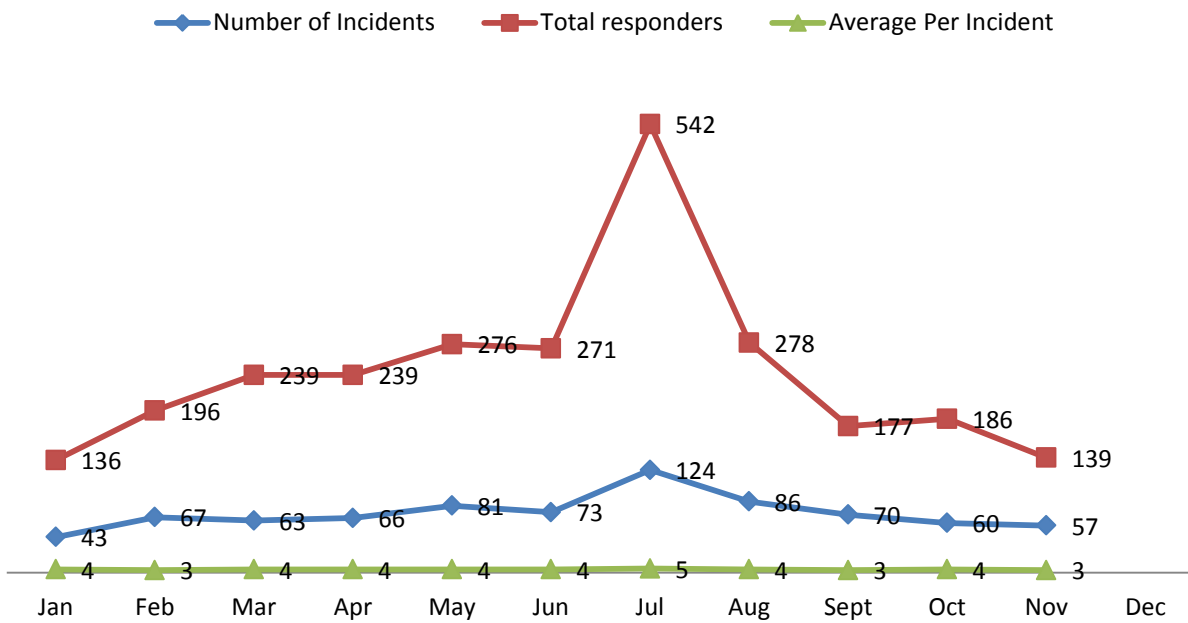




2014 Overlapping Incidents



Average Turnout Per Incident 2014



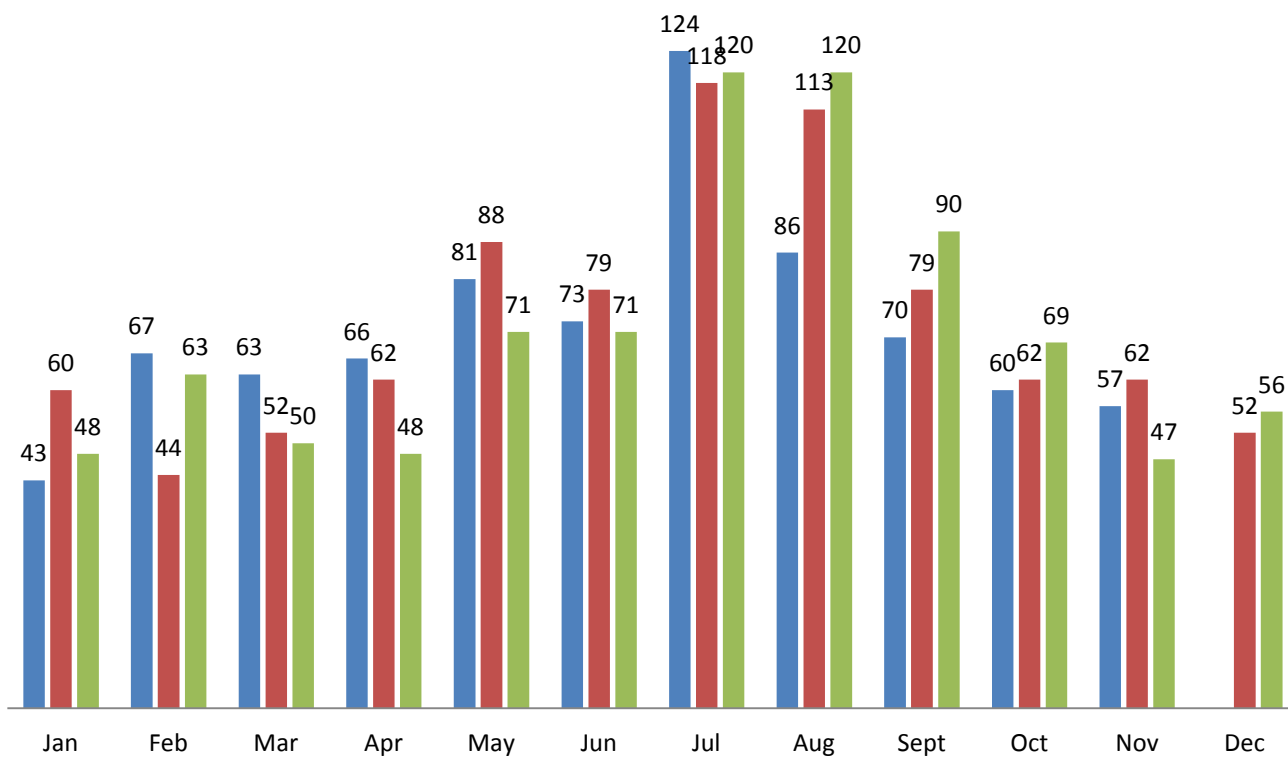


Total Incidents by Month and Year

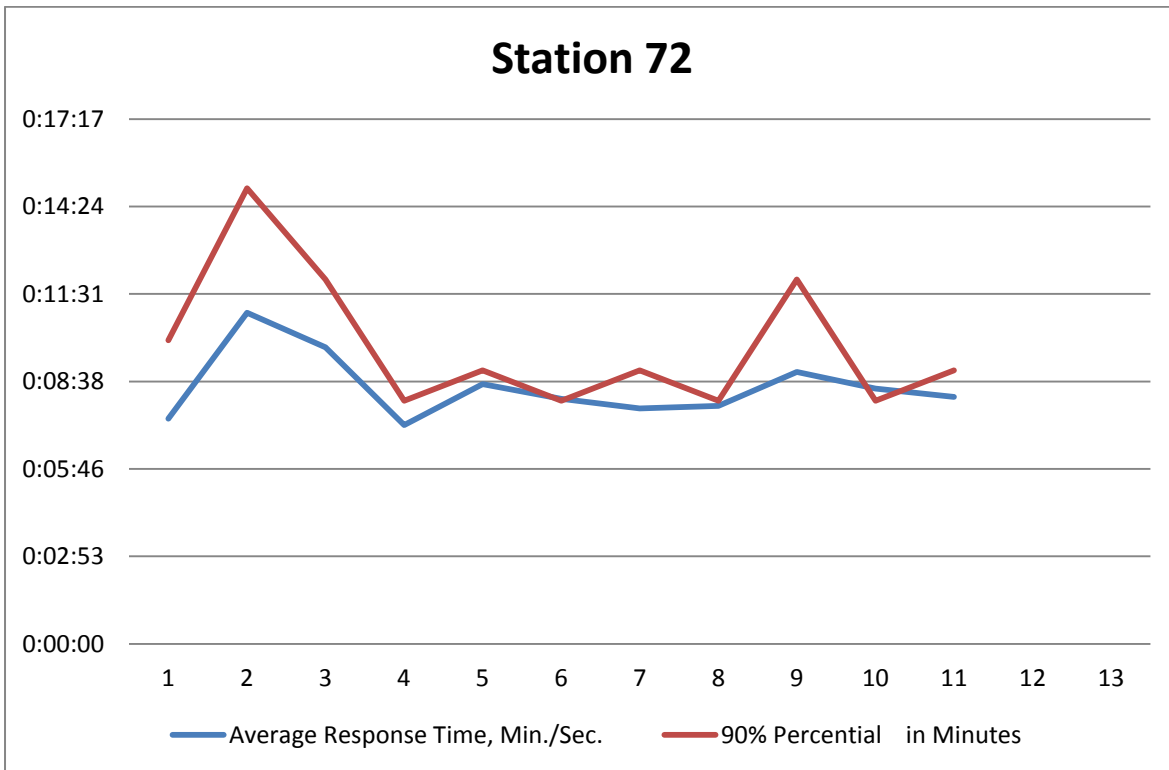
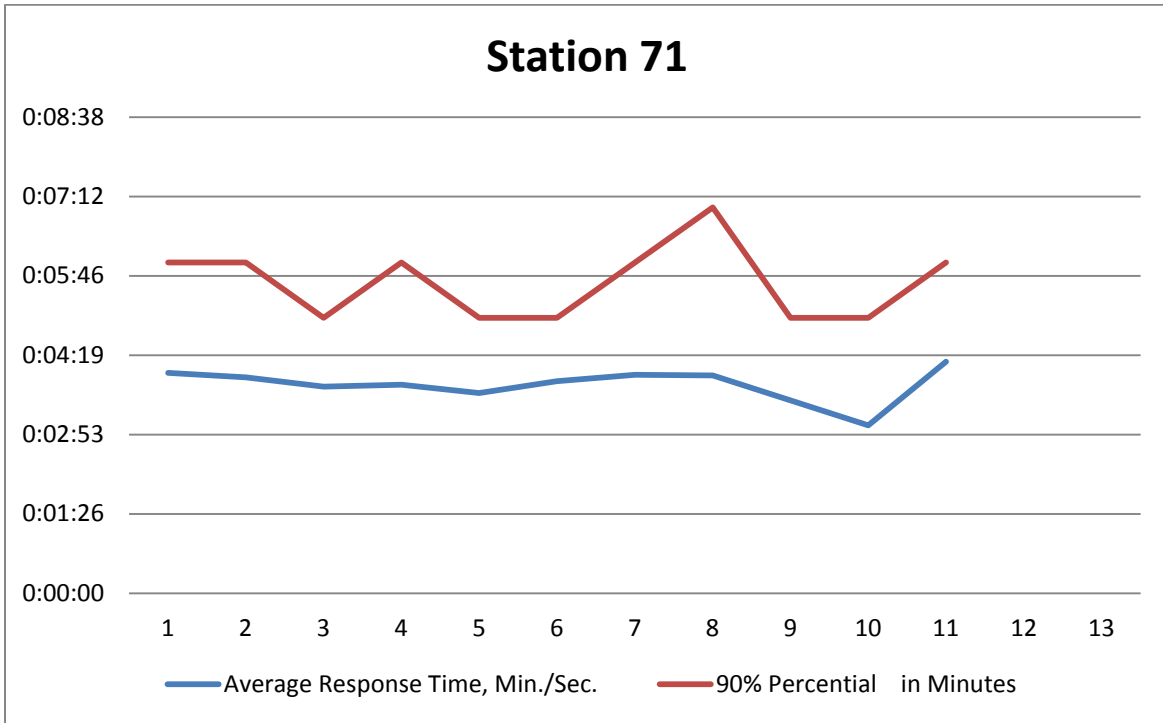
| | Jan | Feb | Mar | Apr | May | Jun | Jul | Aug | Sept | Oct | Nov | Dec | Total |
|-----------------------|-----------|-----------|-----------|-----------|-----------|-----------|------------|------------|-----------|-----------|-----------|-----------|------------|
| 2014 | 43 | 67 | 63 | 66 | 81 | 73 | 124 | 86 | 70 | 60 | 57 | | 790 |
| 2013 | 60 | 44 | 52 | 62 | 88 | 79 | 118 | 113 | 79 | 62 | 62 | 52 | 871 |
| 2012 | 48 | 63 | 50 | 48 | 71 | 71 | 120 | 120 | 90 | 69 | 47 | 56 | 853 |
| 2011 | 53 | 34 | 59 | 61 | 71 | 70 | 91 | 107 | 76 | 61 | 82 | 50 | 815 |
| 2010 | 56 | 46 | 52 | 57 | 85 | 61 | 106 | 87 | 49 | 64 | 49 | 56 | 768 |
| 2009 | 11 | 13 | 15 | 19 | 28 | 31 | 36 | 45 | 31 | 39 | 51 | 54 | 373 |
| | | | | | | | | | | | | | |
| 3 Year Average | 50 | 58 | 55 | 59 | 80 | 73 | 121 | 106 | 80 | 64 | 64 | 53 | 819 |

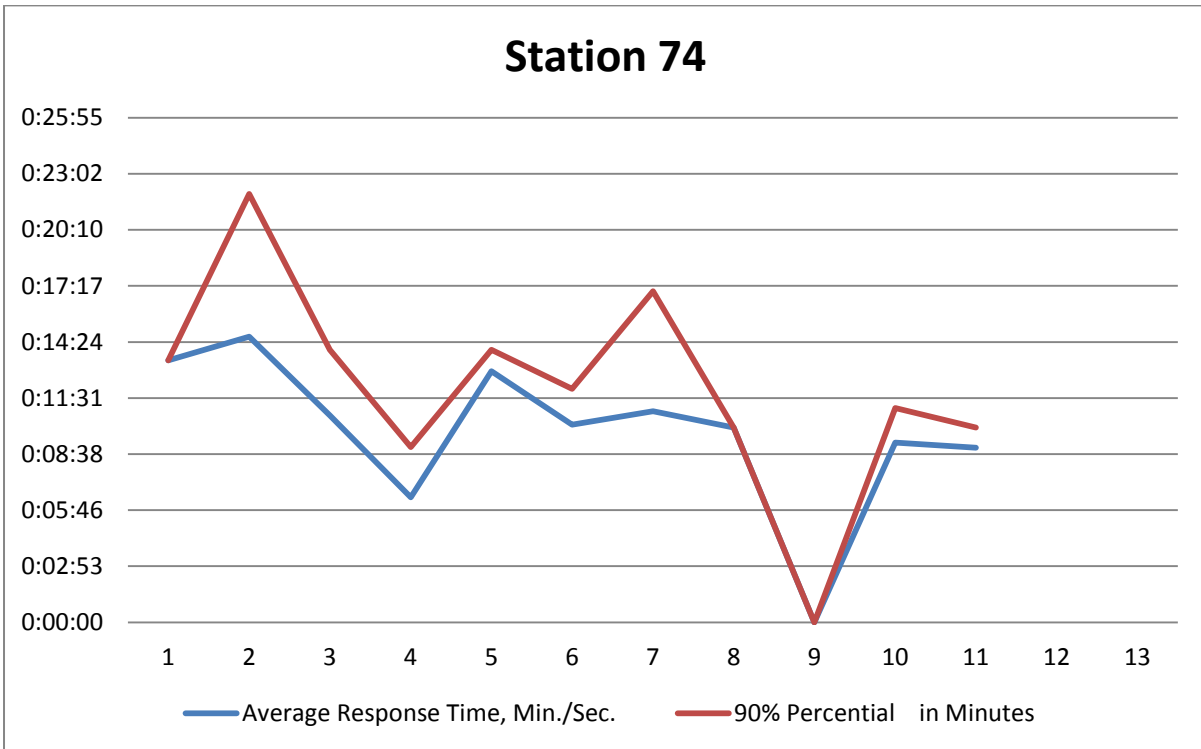
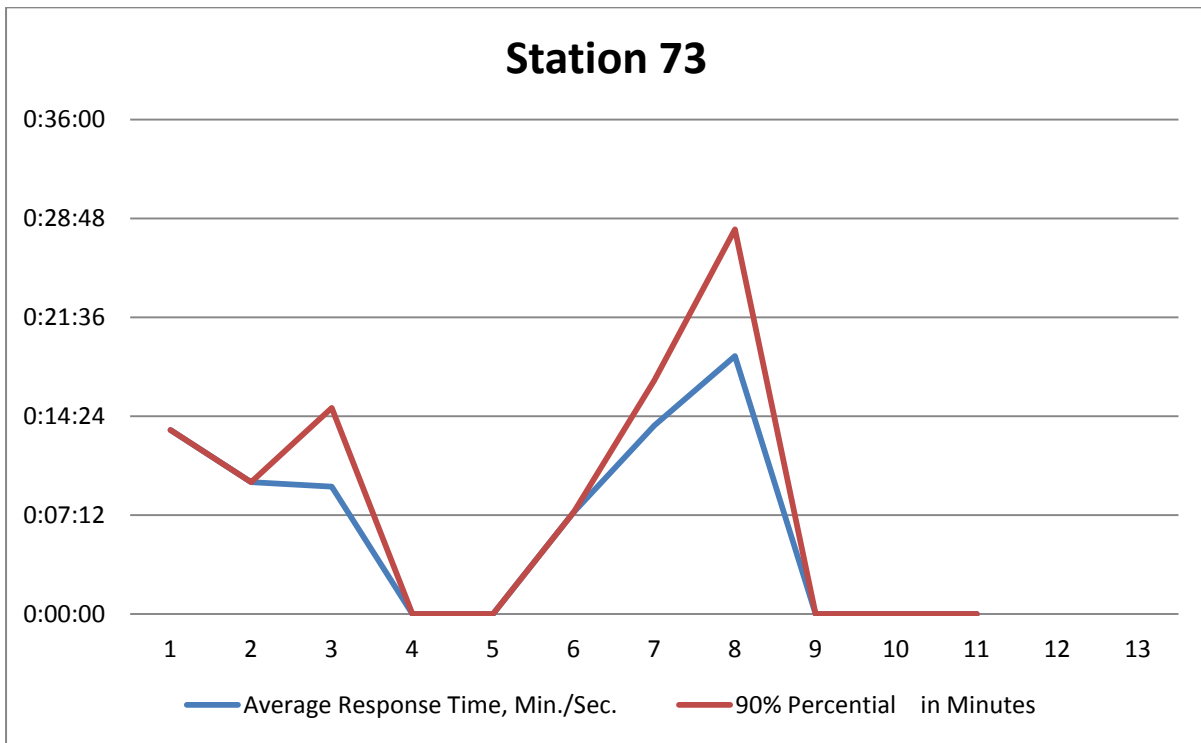
Total Incidents Per Month

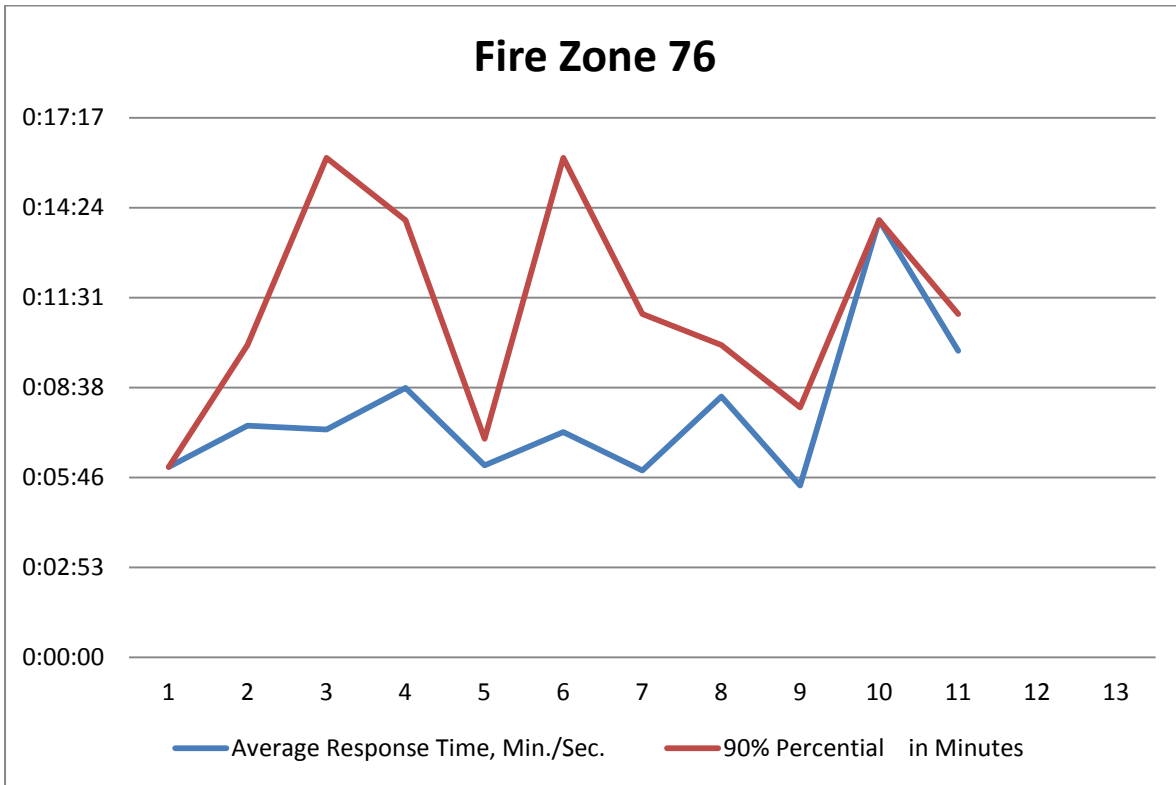
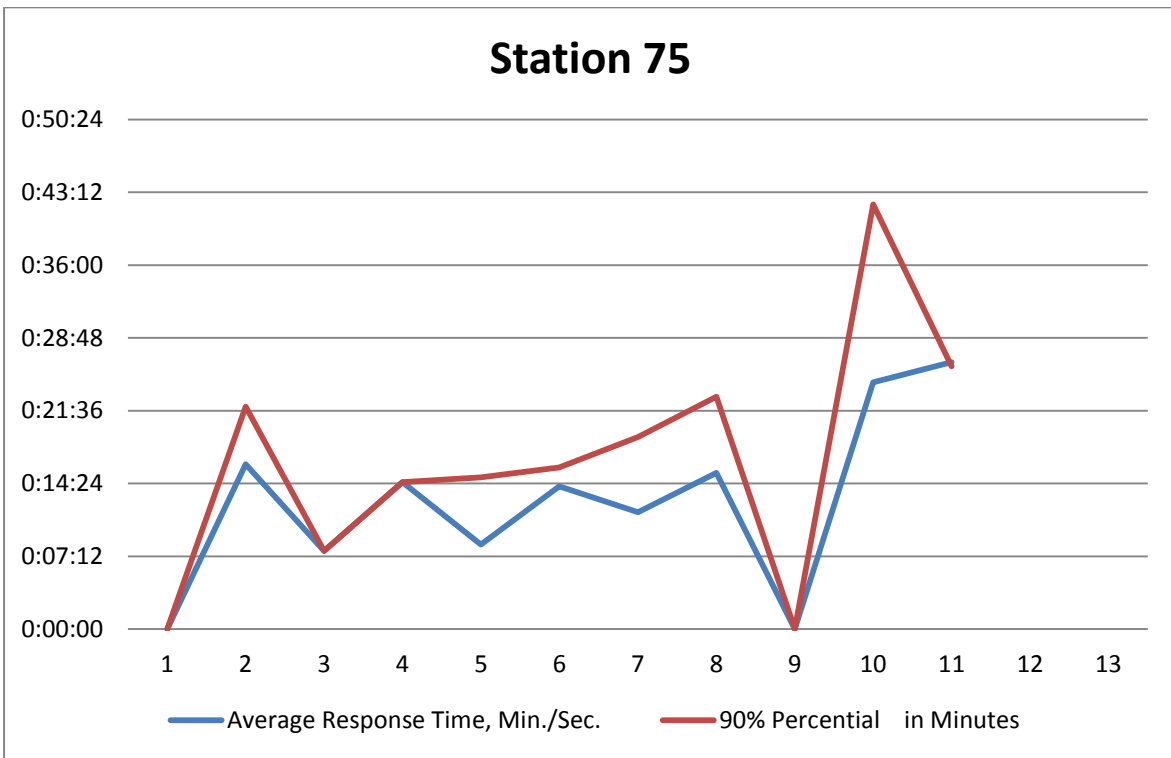
■ 2014 ■ 2013 ■ 2012

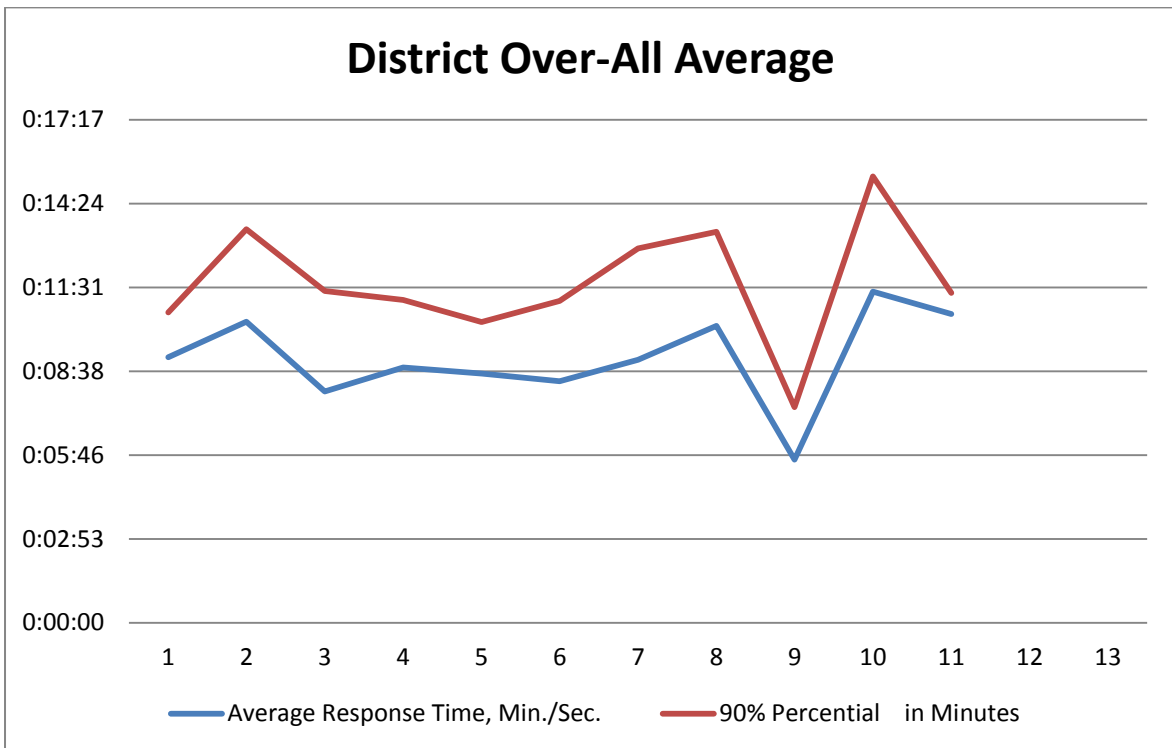
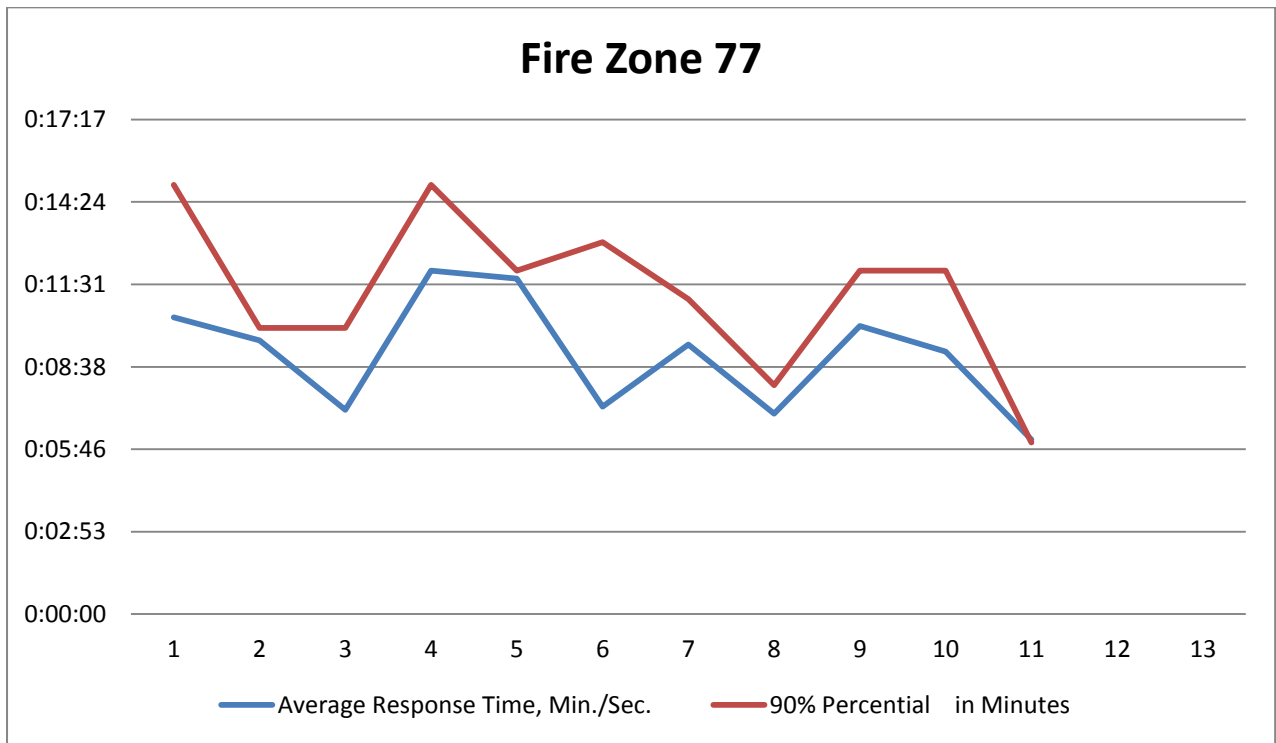


Emergency Response Average and 90% Arrival Times









Significant Calls in November, 2014 *and the not so significant*

11/25/2014 around 1453 hours Officer 703, Engine 71 with four personnel and Lake Chelan EMS responded to a one vehicle accident at 970 Boyd Road. Upon arrival Chelan Fire found a vehicle on its roof with two occupants still in the vehicle. Both occupants of the vehicle were treated and transported to Lake Chelan Community Hospital with non-life threatening injuries.

11/21/2014 around 1633 in heavy snow fall, Chief 701, Rescue 71 with two personnel and Chelan County Sheriff Deputies responded to a vehicle over an embankment at Eldorado Way and Eldorado Place. Upon arrival Chelan Fire found a vehicle that had gone off the road over a 15 foot embankment and then over a 4 foot embankment, then high centered on another four foot embankment. The driver of the vehicle stated he was coming down the highway and couldn't stop in the snow and went off the embankment. Other occupants of the car were his wife and two children with seat belts on. No one was injured in the accident.

11/19/2014 around 2257 hours Chief 701, Engine 71 with six personnel along with Lake Chelan EMS and three Chelan County Sheriff Deputies, responded to vehicle vs. building at Pat and Mikes on SR 97A and SR 971. The first unit on scene reported a vehicle in the building with a person yelling for help. Chelan Fire and Lake Chelan EMS conducted a rapid extrication due the building being compromised. The patient was treated and transported to Lake Chelan Community Hospital. Fuel tanks and power to the building were secured and the building was taped off to keep people out of the collapse zone. The vehicle was left in the building until the building could be shored up and safely removed.

11/16/2014 around 1804 hours Chief 701, and Engine 71 responded automatic aid with Chelan County Fire District 5 and Lake Chelan EMS to a reported house fire at 3200 Ivan Morse Road. Initially District 5 units on scene reported the fire under control and Chelan Fire units could cancel.

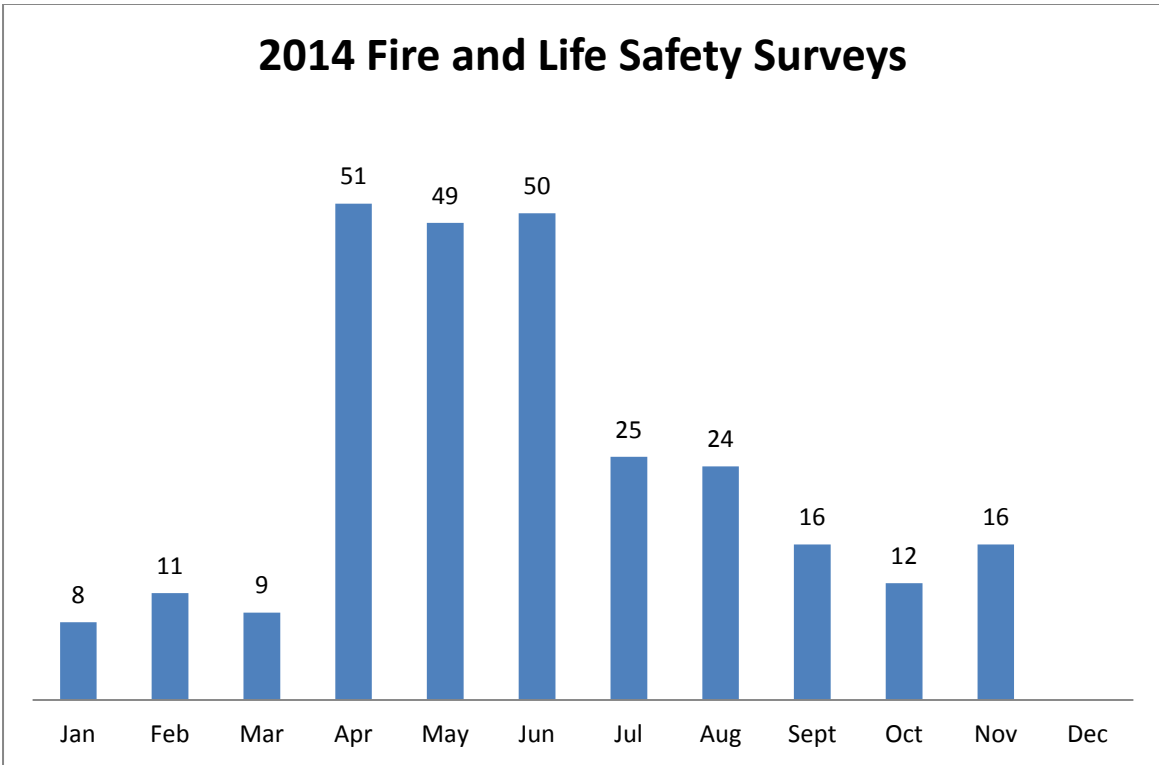
11/12/2014 around 0646 hours Officer 703, and Engine 71 with a total of five personnel along with Medic 3171 responded to a house fire at 22 Chestnut Street. First unit on scene reported a single wide mobile home with smoke showing. The occupant was contacted and a fire on a stove top had spread to the cupboards had been extinguished. Engine 71's crew checked for extension. The cause of the fire was grease left on the stove top.

Public Service Announcements:

November 2014 PSA

- Emergency Preparedness
- Pet-Disaster Preparedness
- Water/Food Emergency Preparedness
- Carbon Monoxide Safety Tips
- 10 Tips before Winter Freeze
- Turkey Fryer Safety

2014 Fire and Life Safety Surveys



Smoke Detector Home Safety Program

■ Home Visits 197 ■ Alarms Installed 353 ■ Batteries Replace 69

