



# **CHELAN FIRE AND RESCUE**



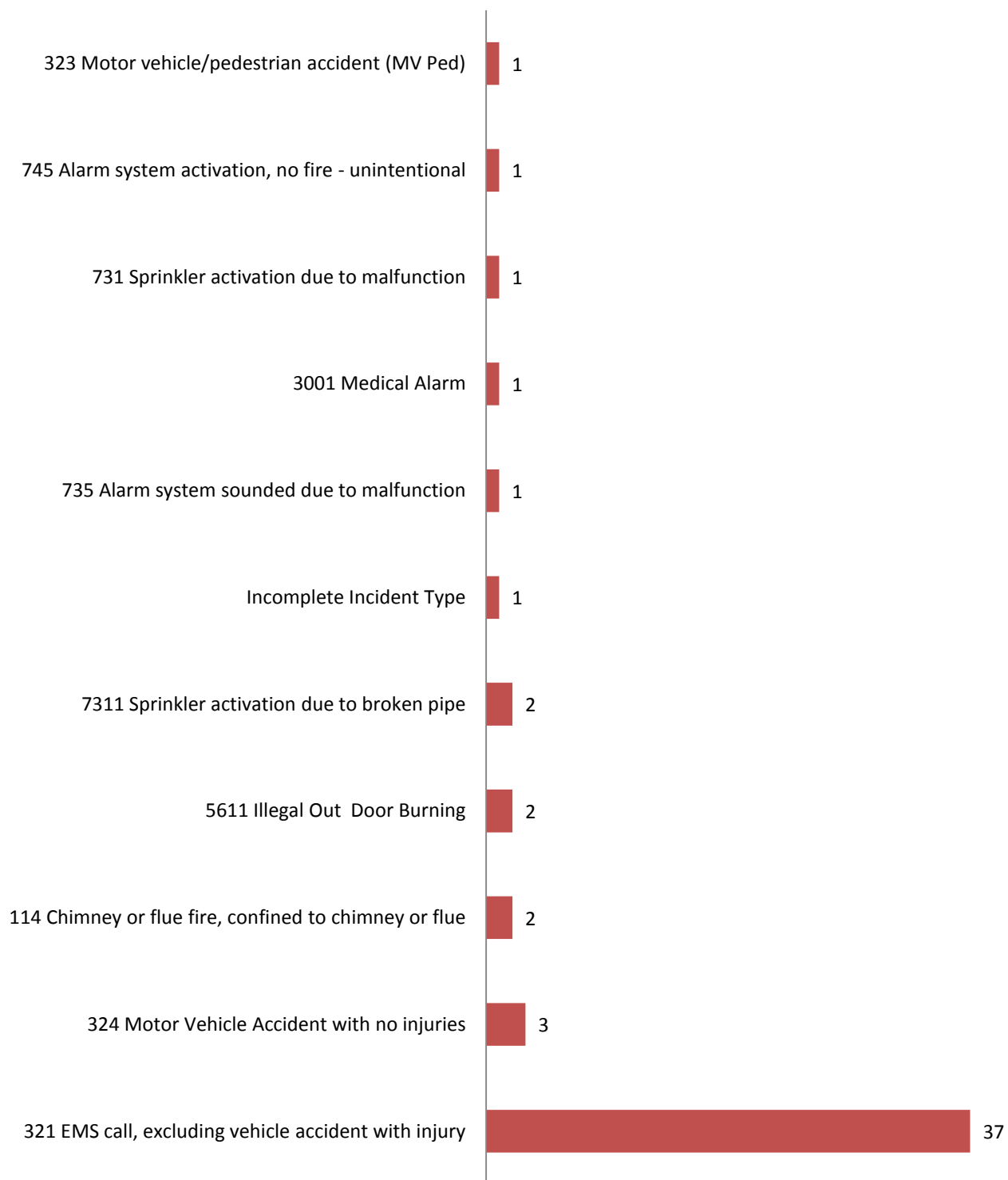
## **Emergency Response Report**

**December 2014**



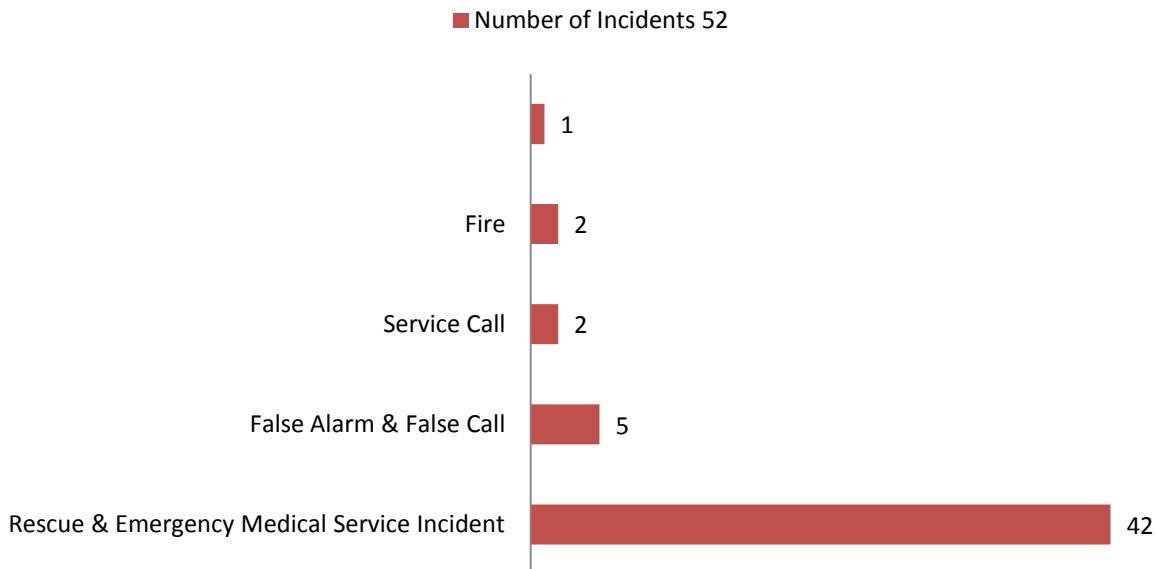
## Incident Types December 2014

■ Number of Incidents 52

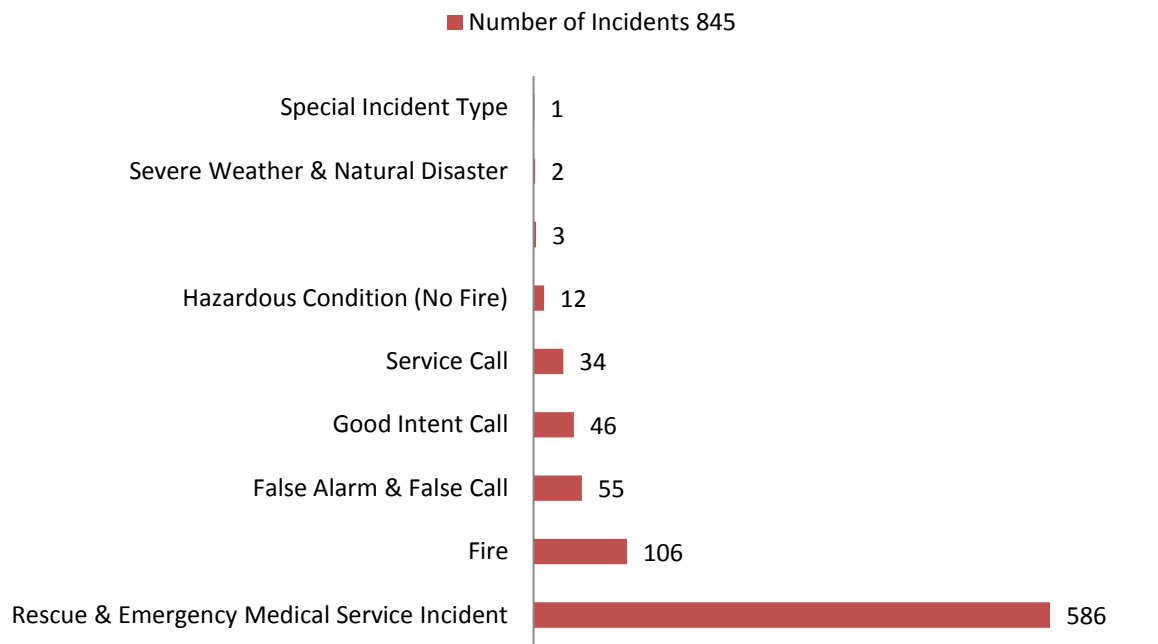




## Incident Types by Group December 2014



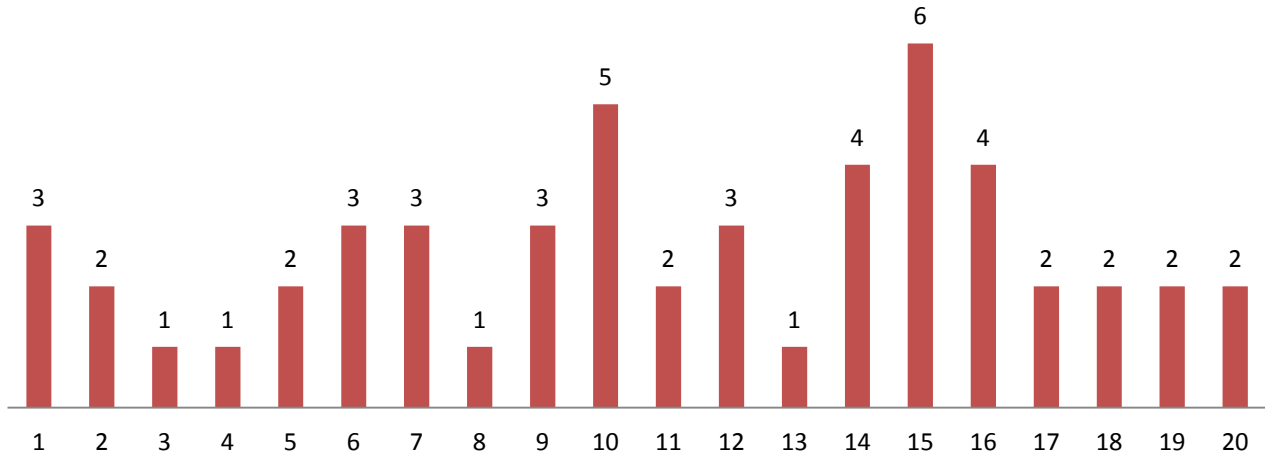
## Incident Types by Group Year To Date





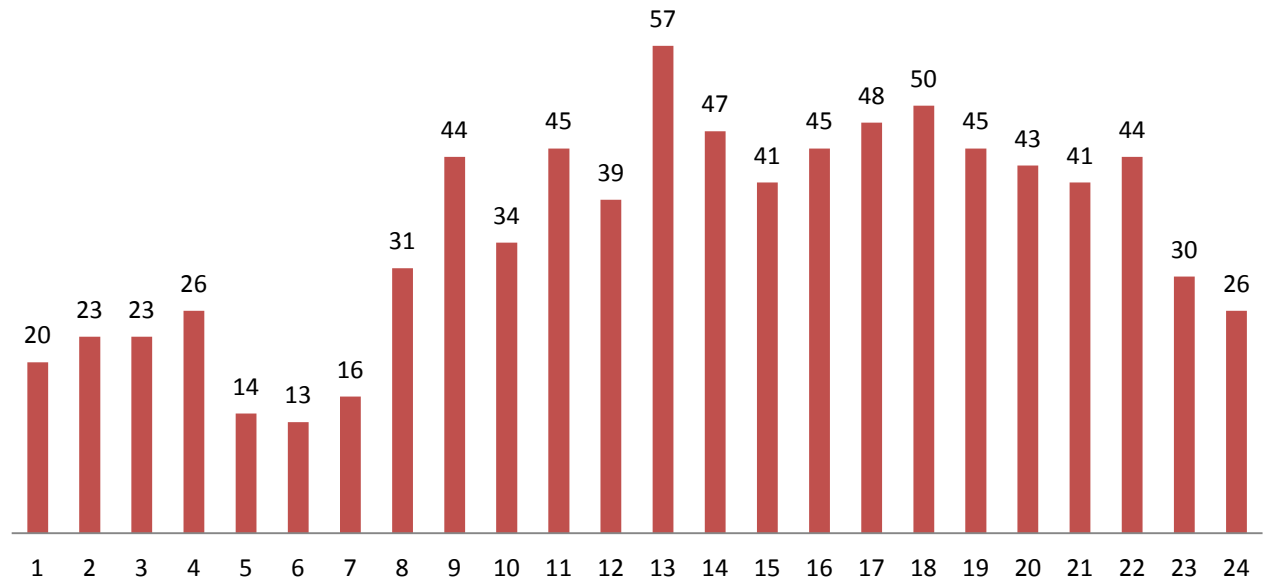
## Incident by Hour of the Day December 2014

■ Total Incidents 52

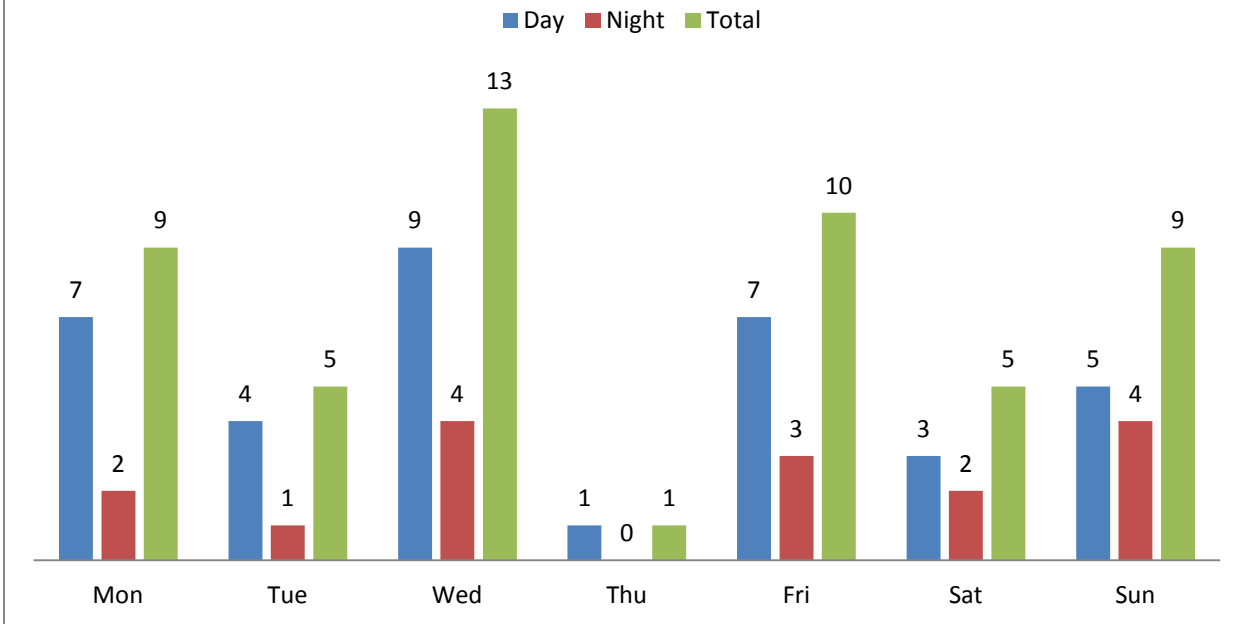


## Incident Hour of the Day Year To Date

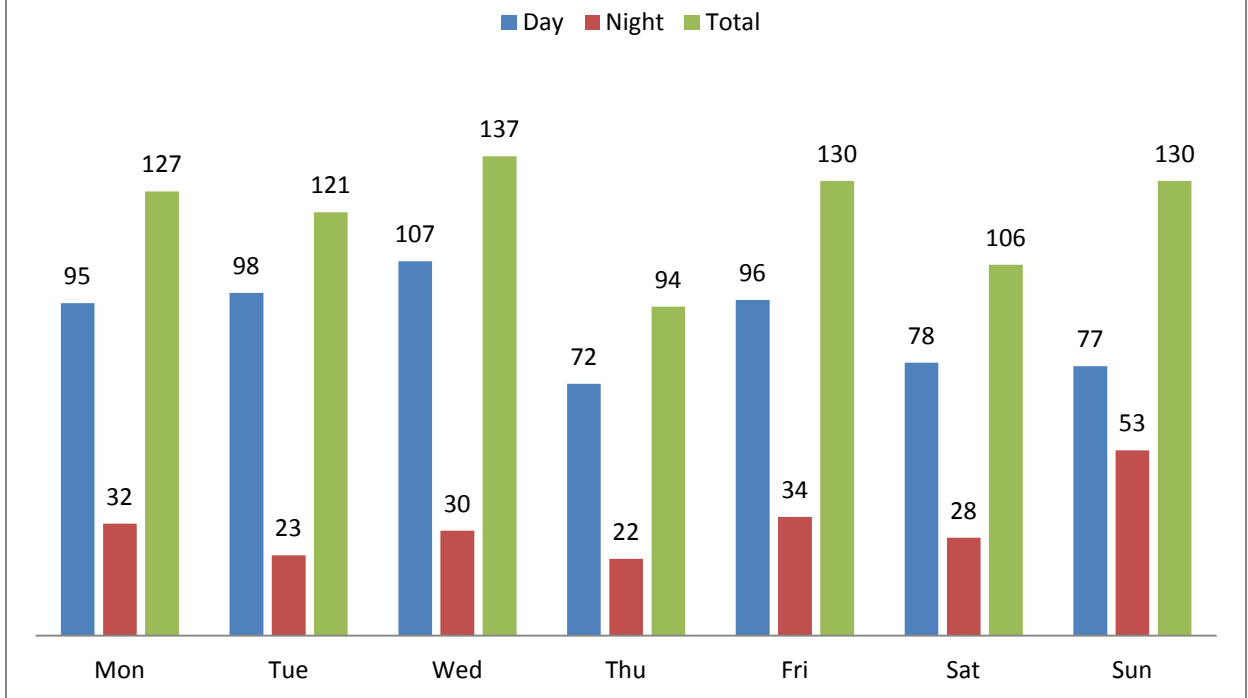
■ Total Incidents 845



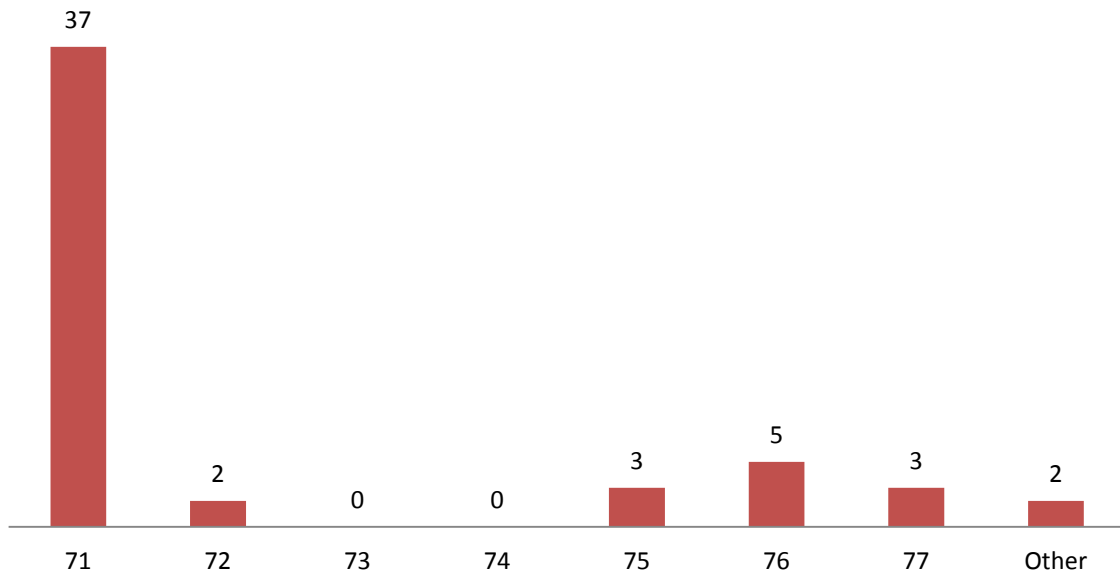
## Day vs. Night Calls by Day of the Week December 2014



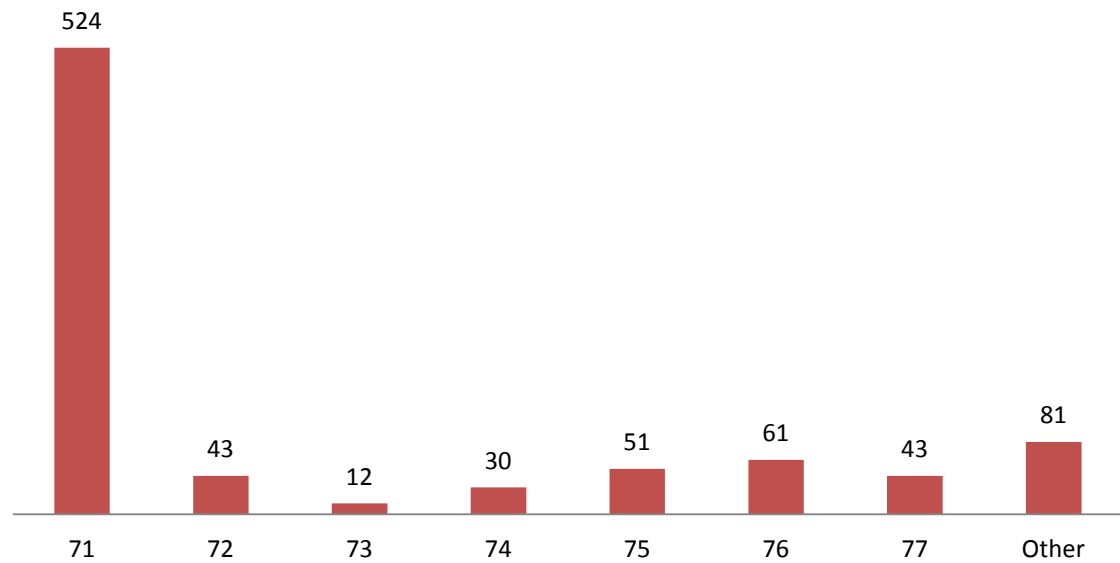
## Day vs. Night Calls by Day of the Week Year To Date



### Incident by First Due Area December 2014

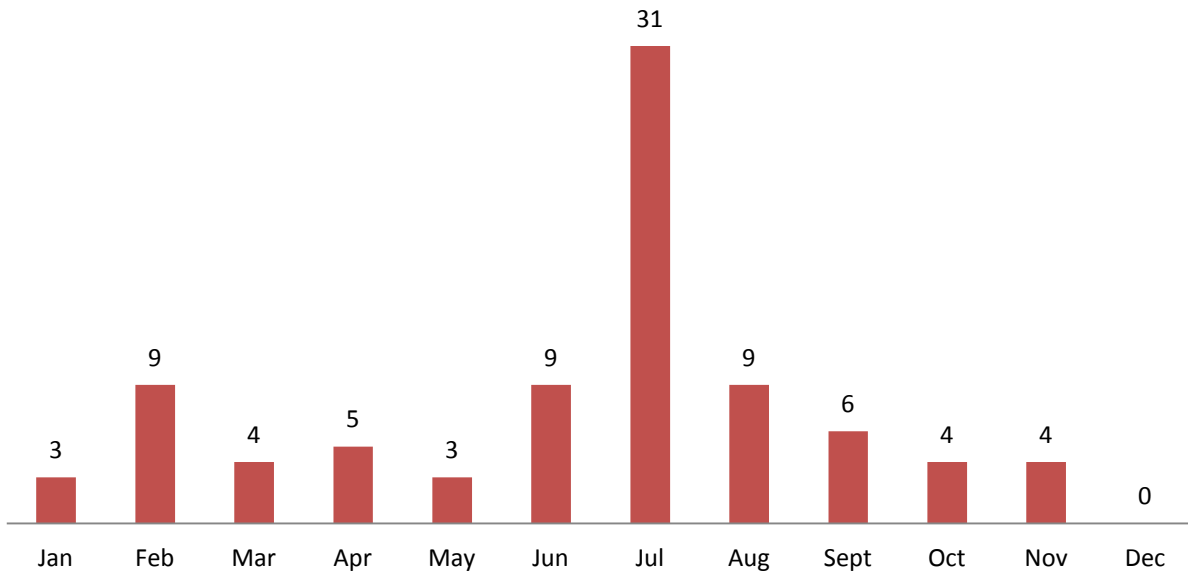


### Incidents by First Due Area Year To Date

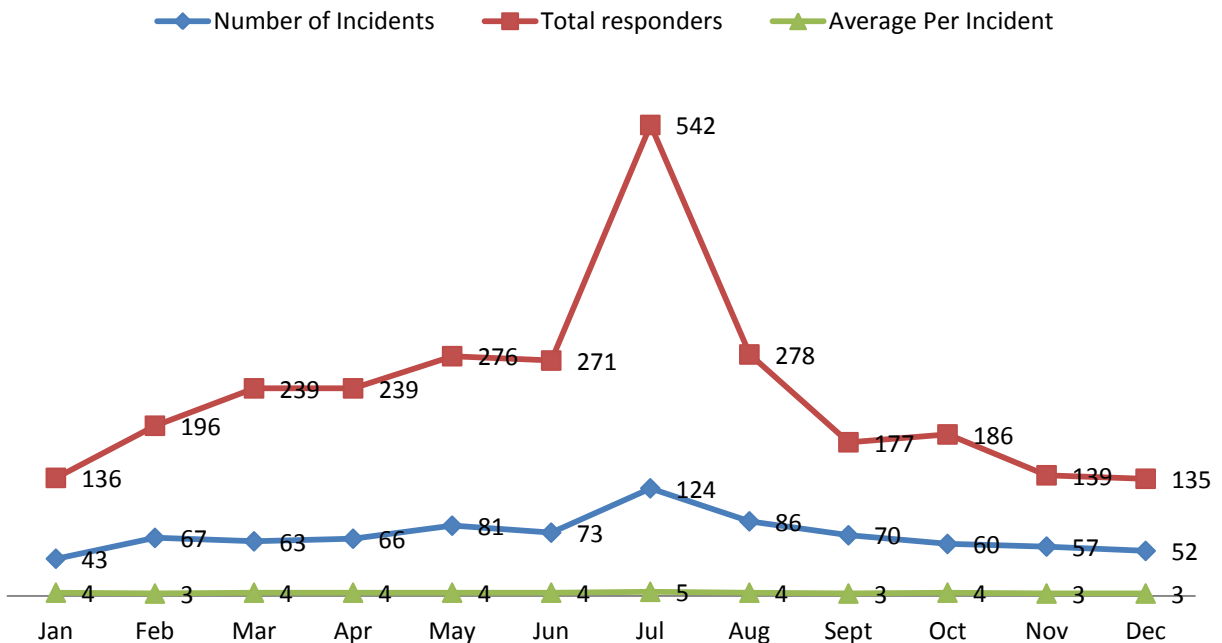




## 2014 Overlapping Incidents Total 87



## Average Turnout Per Incident 2014



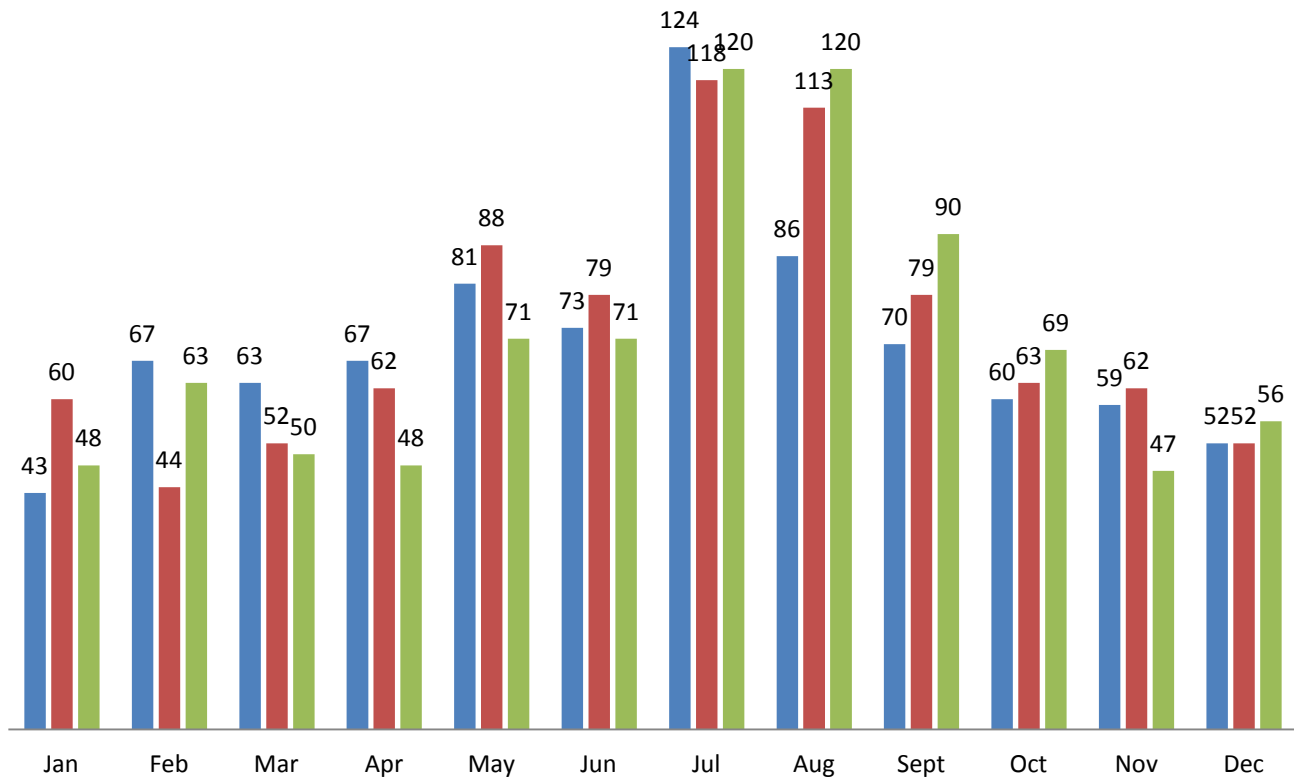


### Total Incidents by Month and Year

	Jan	Feb	Mar	Apr	May	Jun	Jul	Aug	Sept	Oct	Nov	Dec	Total
<b>2014</b>	43	67	63	67	81	73	124	86	70	60	59	52	<b>845</b>
<b>2013</b>	60	44	52	62	88	79	118	113	79	63	62	52	<b>872</b>
<b>2012</b>	48	63	50	48	71	71	120	120	90	69	47	56	<b>853</b>
<b>2011</b>	53	34	59	61	71	70	91	107	76	61	82	50	<b>815</b>
<b>2010</b>	56	46	52	57	85	61	106	87	49	64	49	56	<b>768</b>
<b>2009</b>	11	13	15	19	28	31	36	45	31	39	51	54	<b>373</b>
<b>3 Year Average</b>	<b>50</b>	<b>58</b>	<b>55</b>	<b>59</b>	<b>80</b>	<b>74</b>	<b>121</b>	<b>106</b>	<b>80</b>	<b>64</b>	<b>56</b>	<b>53</b>	<b>857</b>

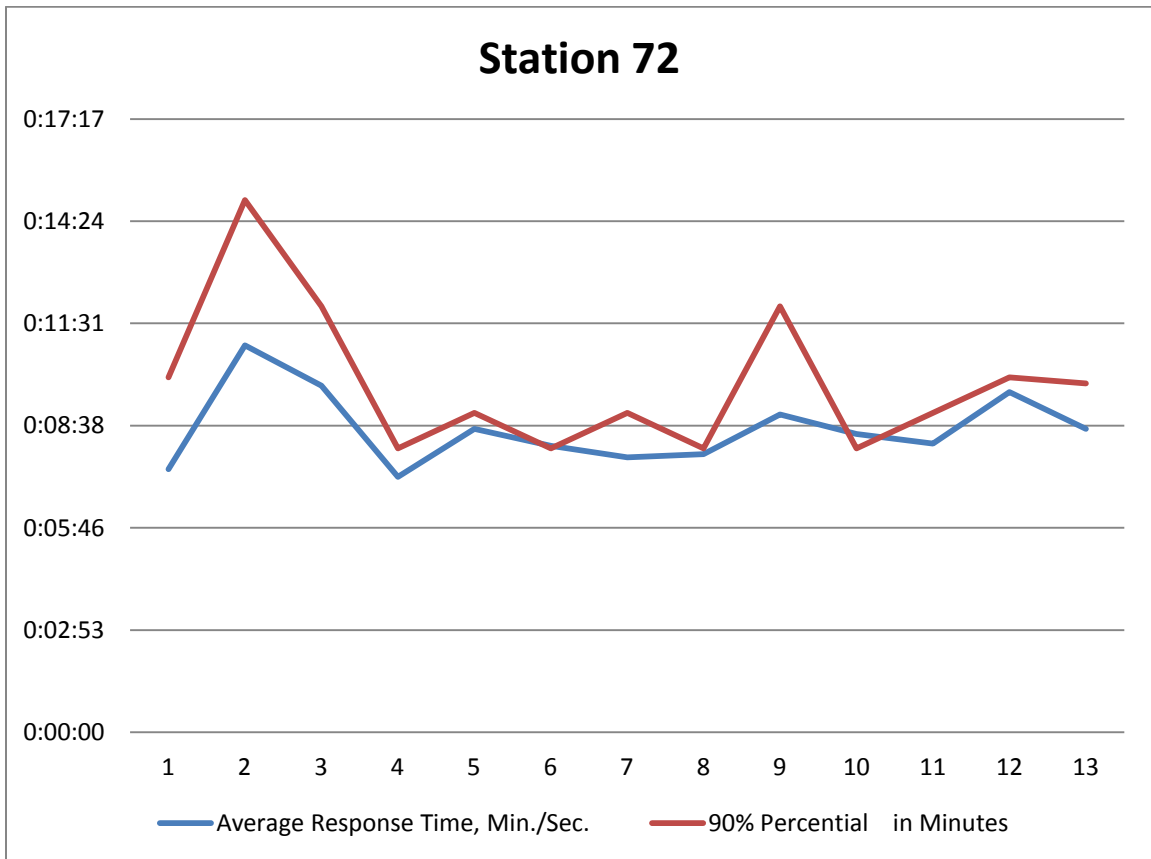
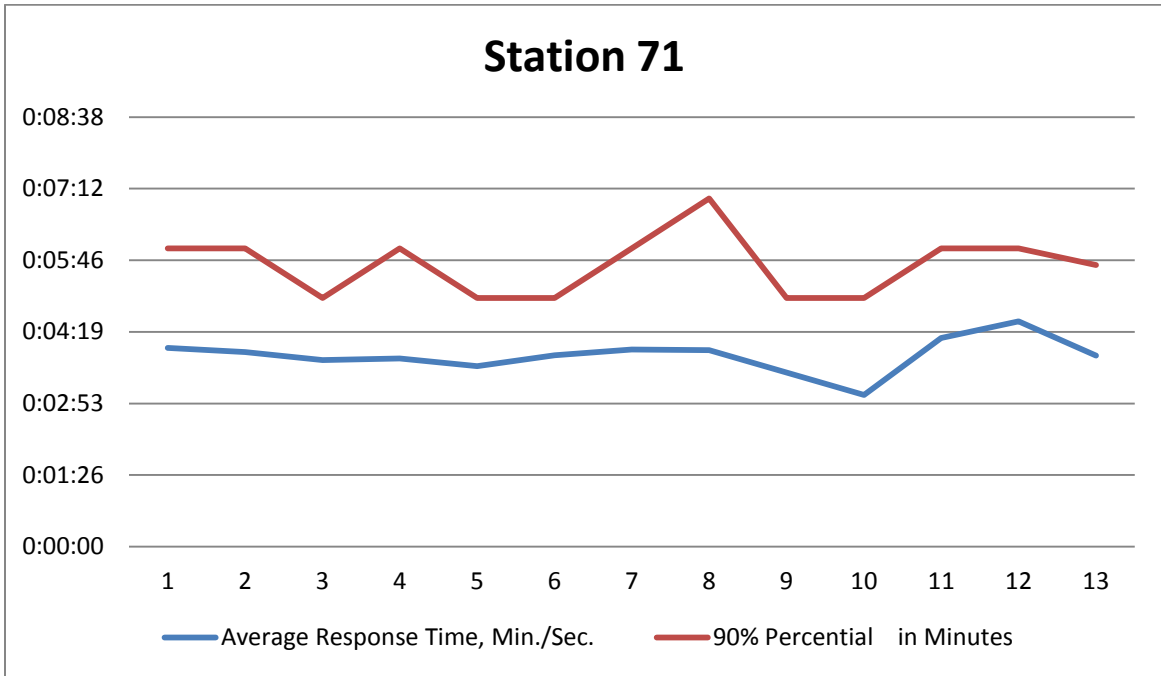
### Total Incidents Per Month

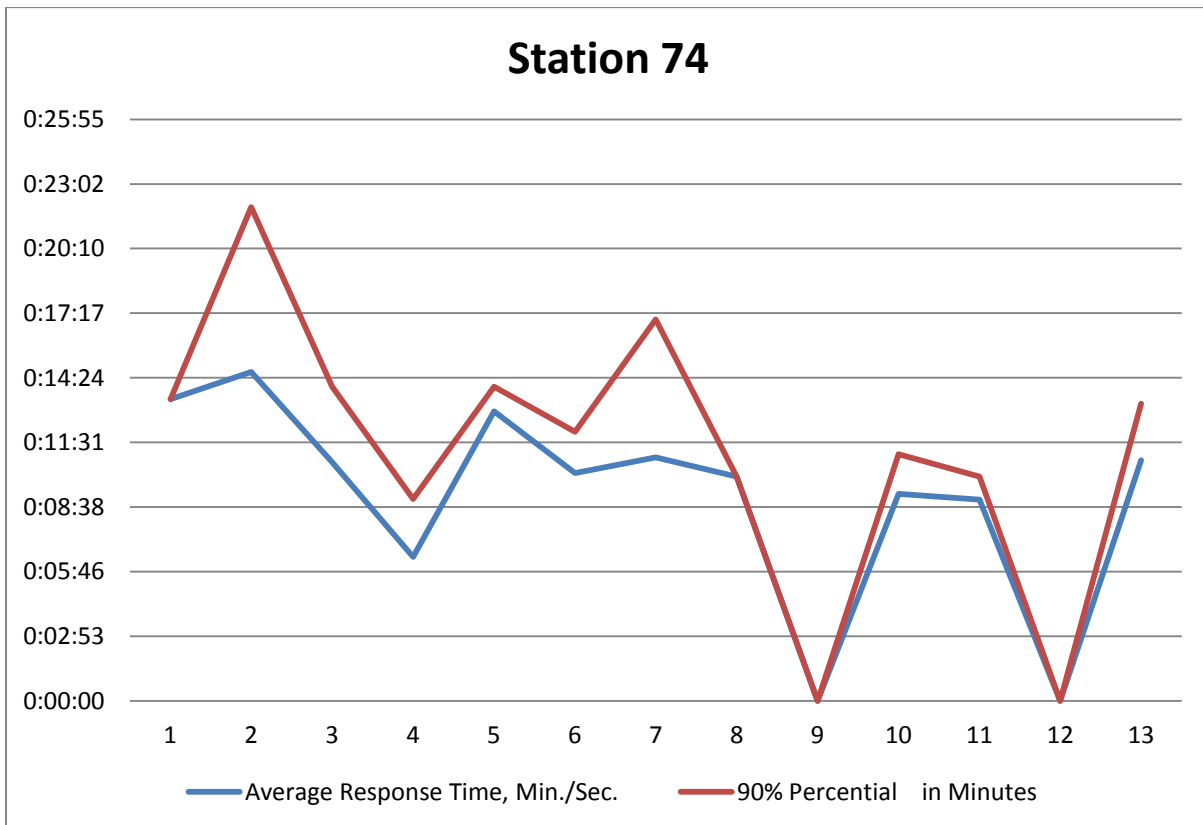
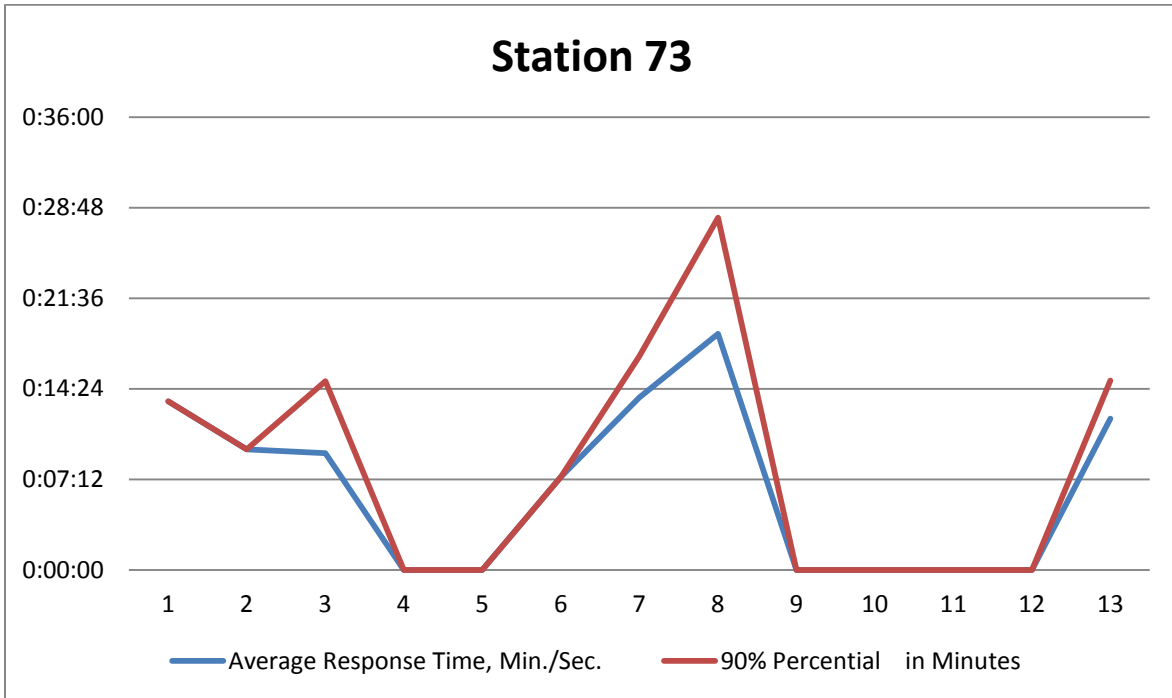
■ 2014 ■ 2013 ■ 2012

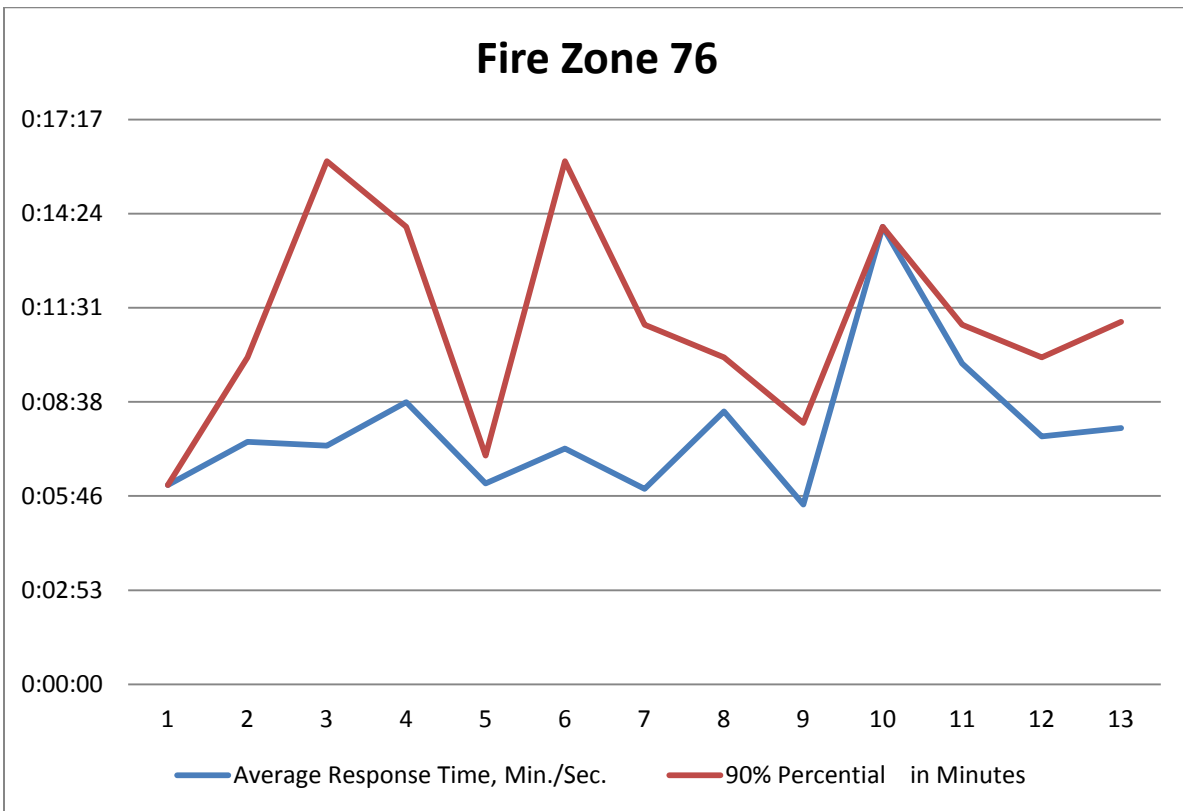
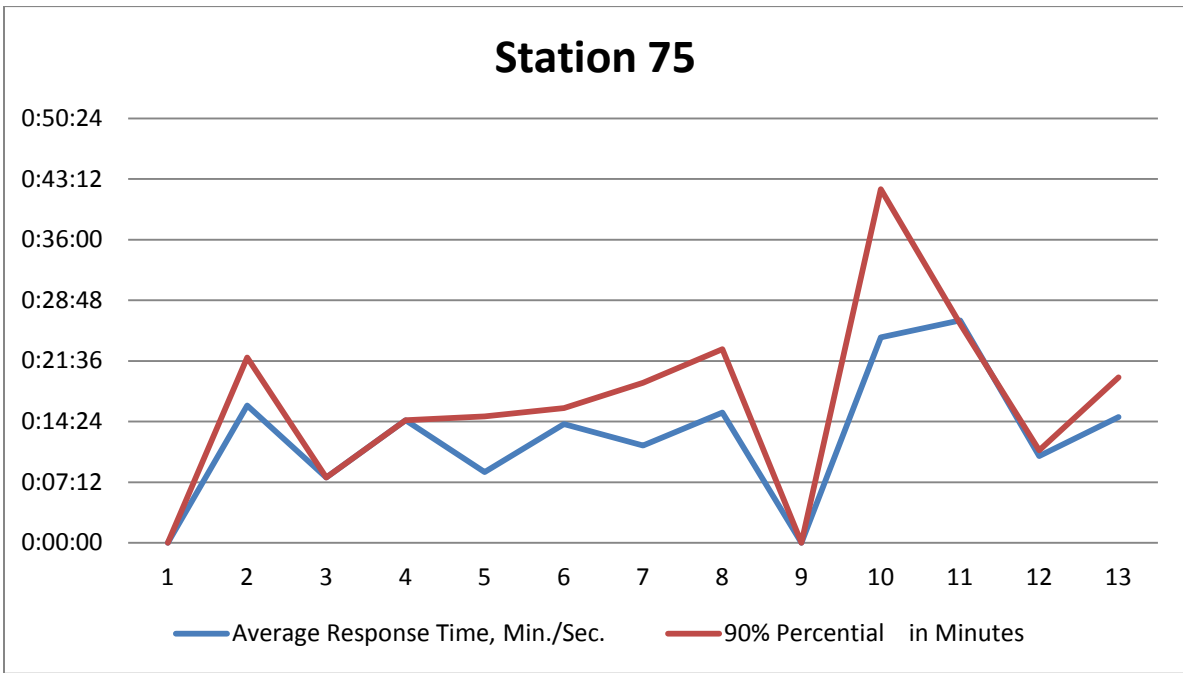


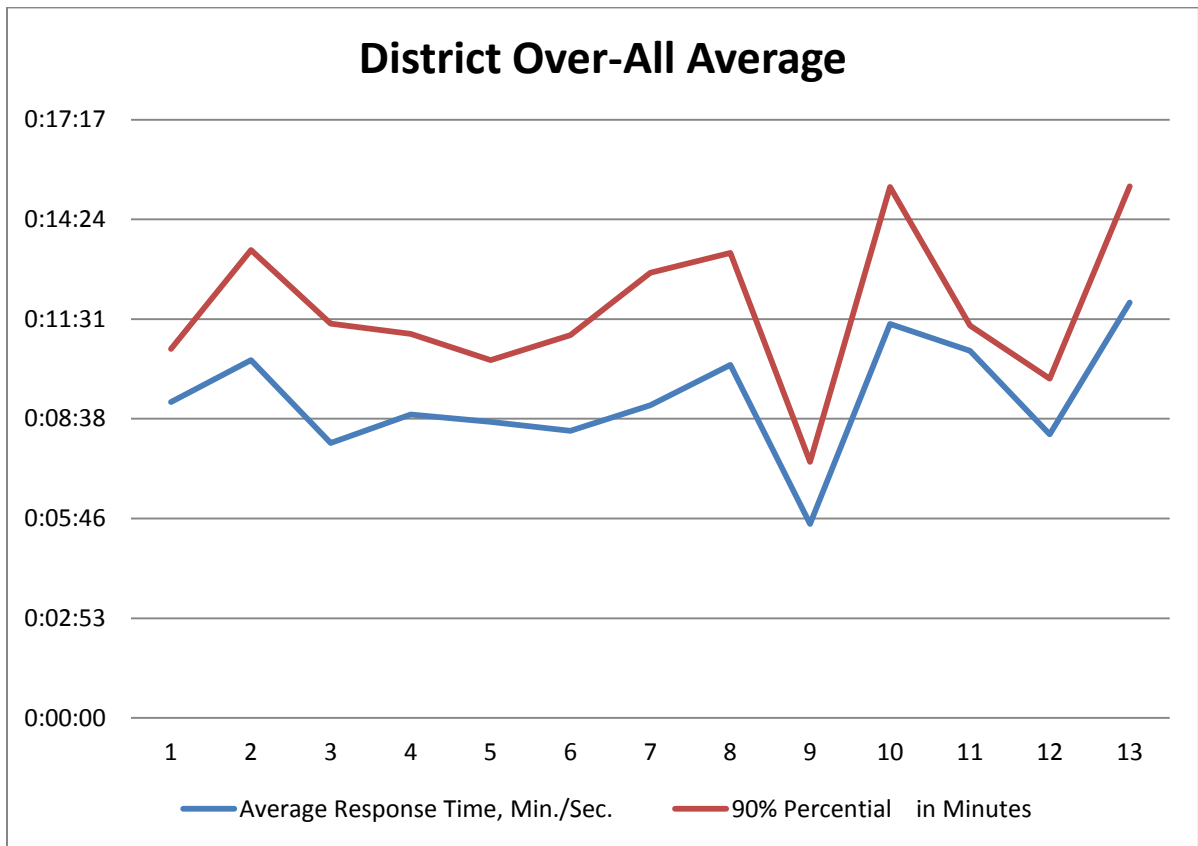
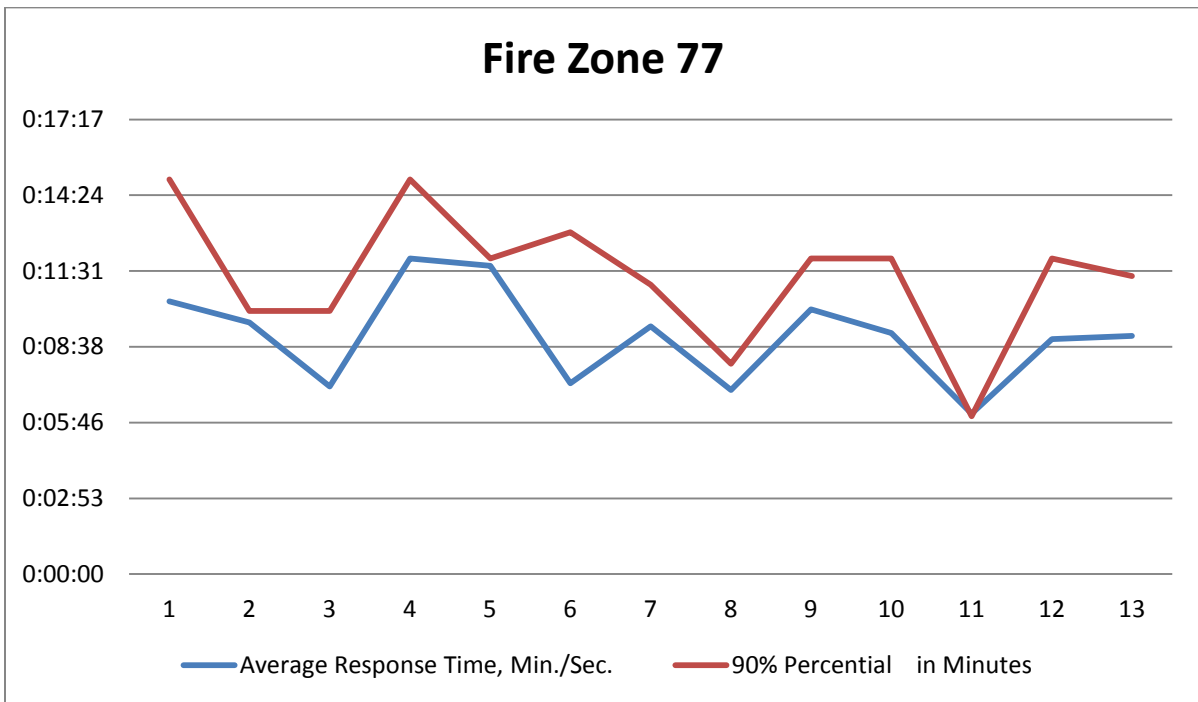


## Emergency Response Average and 90% Arrival Times









## **Significant Calls in December, 2014** *and the not so significant*

---

12/13/2014 around 0200 hours, Officer 703, Rescue 71 with four personnel, Medic 3171 and Chelan County Sheriff Deputies responded to a vehicle vs. pedestrian. Upon arrival of the first unit, the patient was found laying in the road and the vehicle had fled the scene. The patient was treated and transported to Lake Cehaln Community Hospital with non-life threatening injuries. The incident is under investigation by the Chelan County Sheriff's office.

12/06/2014 around 1947 hours Rescue 71 and Engine 71 with four personnel along with Lake Chelan EMS and three Chelan County Sheriff Deputies, responded to vehicle off the road vs. tree. Medic 3171 evalauted the patient who denied injury. The vehicle electrical system was secured and the scene turned back over to Chelan County Sheriff Deputies. Cause of the accident is under investigation.

12/06/2014 around 0348 hours Officer 703, and Engine 71 with four personnel responded to a report of an automatic fire alarm at 5 Howser Road. The first unit on scene reported nothing showing. Upon investigation of the commercial property, E71 found a dry sprinkler water riser had activated and filled with water. There was no fire problem, the building was placed on fire-watch until the system could be reset.

12/01/2014 around 2133 hours Chief 701, and Engine 71 with a total of three personnel responded to a reported chimney fire at 3500 SR97A. The first unit on scene reported nothing showing. The occupant had extinguished the fire in the fire place and the steam carried up the chimney extinguishing the chimney fire. Engine 71's crew checked for extension. The cause of the chminey fire was creosote build up in the chimney.

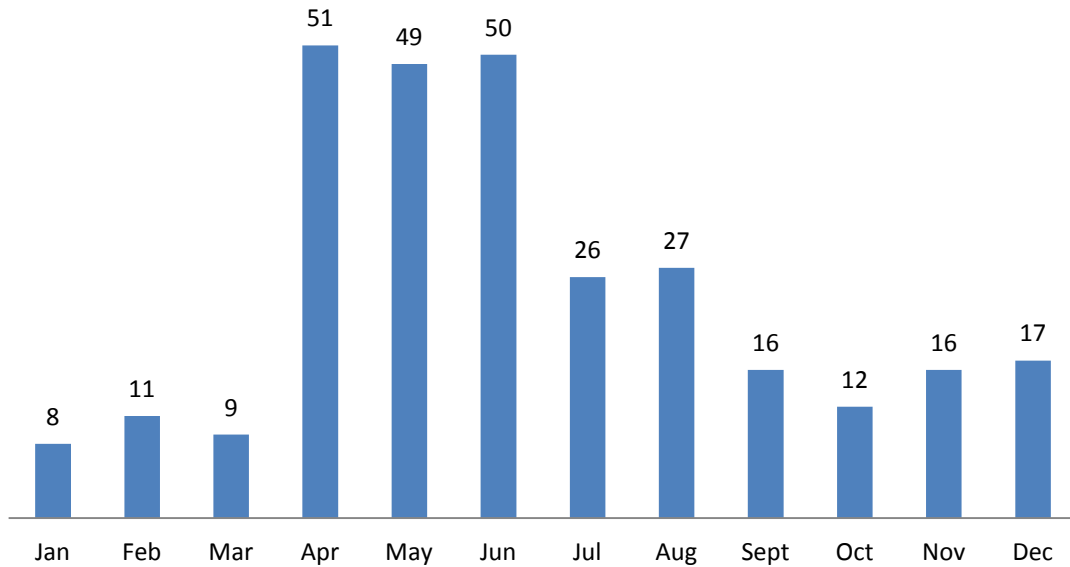
---

## **Public Service Announcements:**

### **December 2014 PSA**

- Christmas Tree Safety
- How to Prevent Falls

## 2014 Fire and Life Safety Surveys



## Smoke Detector Home Safety Program

■ Home Visits 203   ■ Alarms Installed 376   ■ Batteries Replace 69

