



# **CHELAN FIRE AND RESCUE**

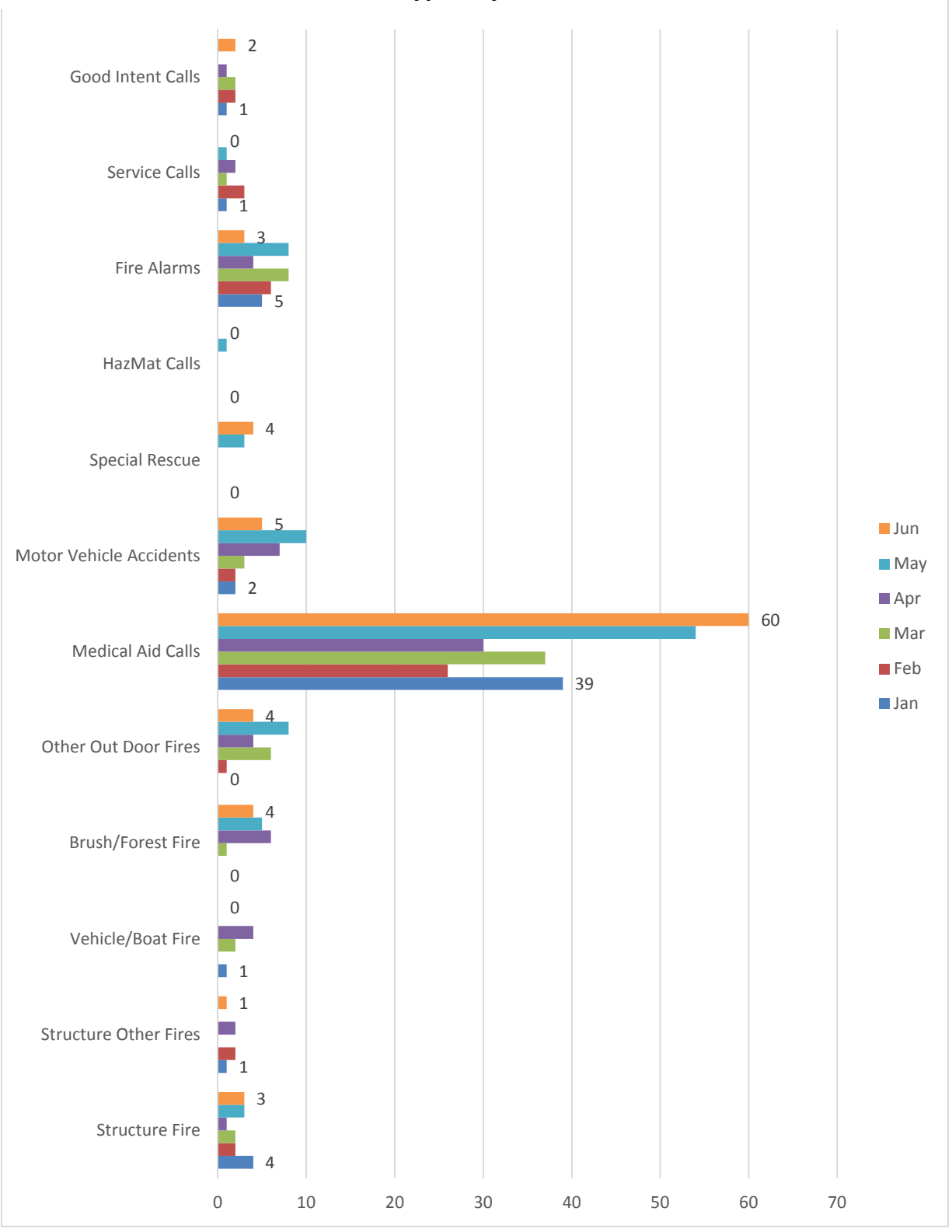


## **Emergency Response Report**

**January, February, March, April, May, June  
2015**

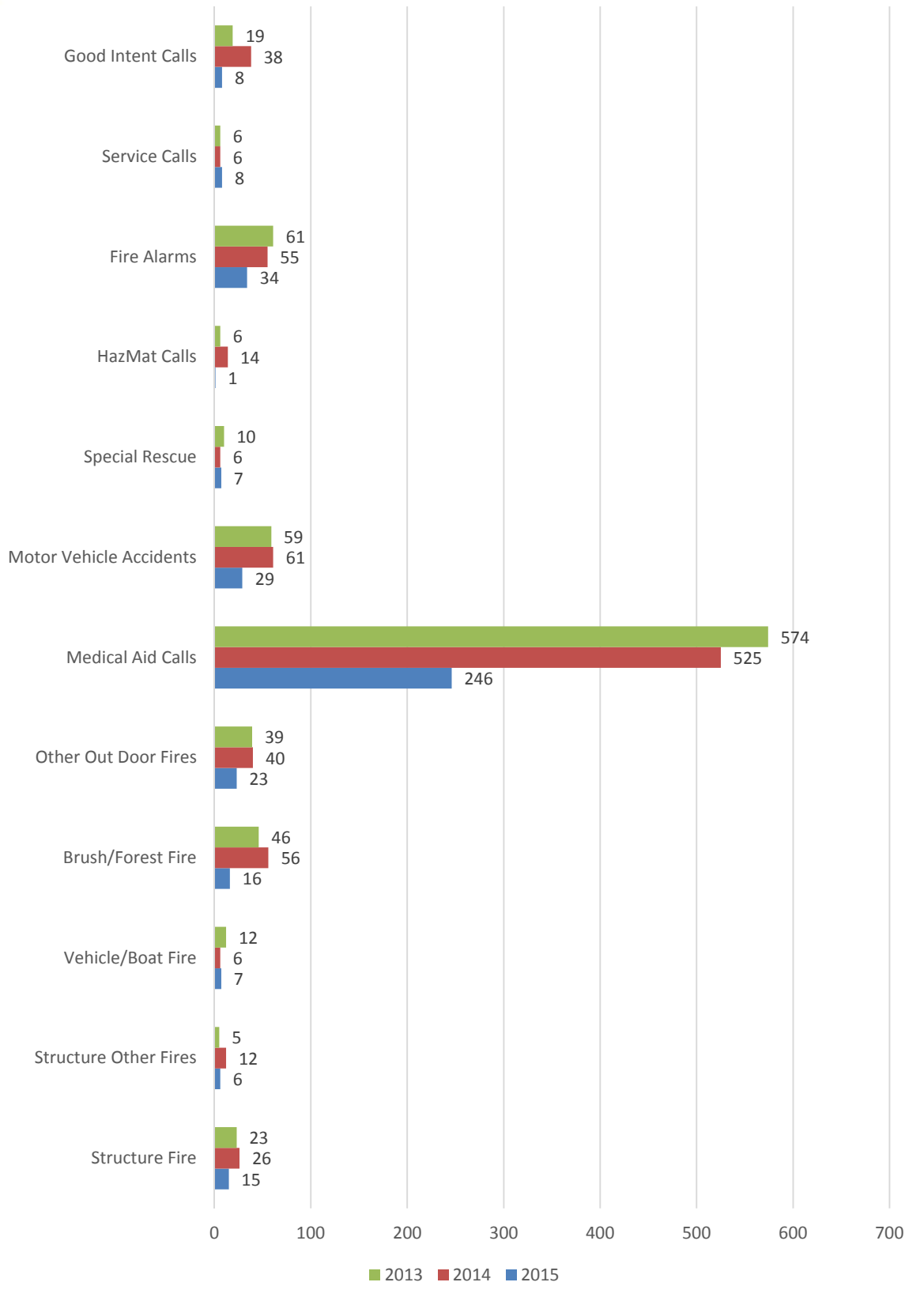


### Incident Types by Month 2015



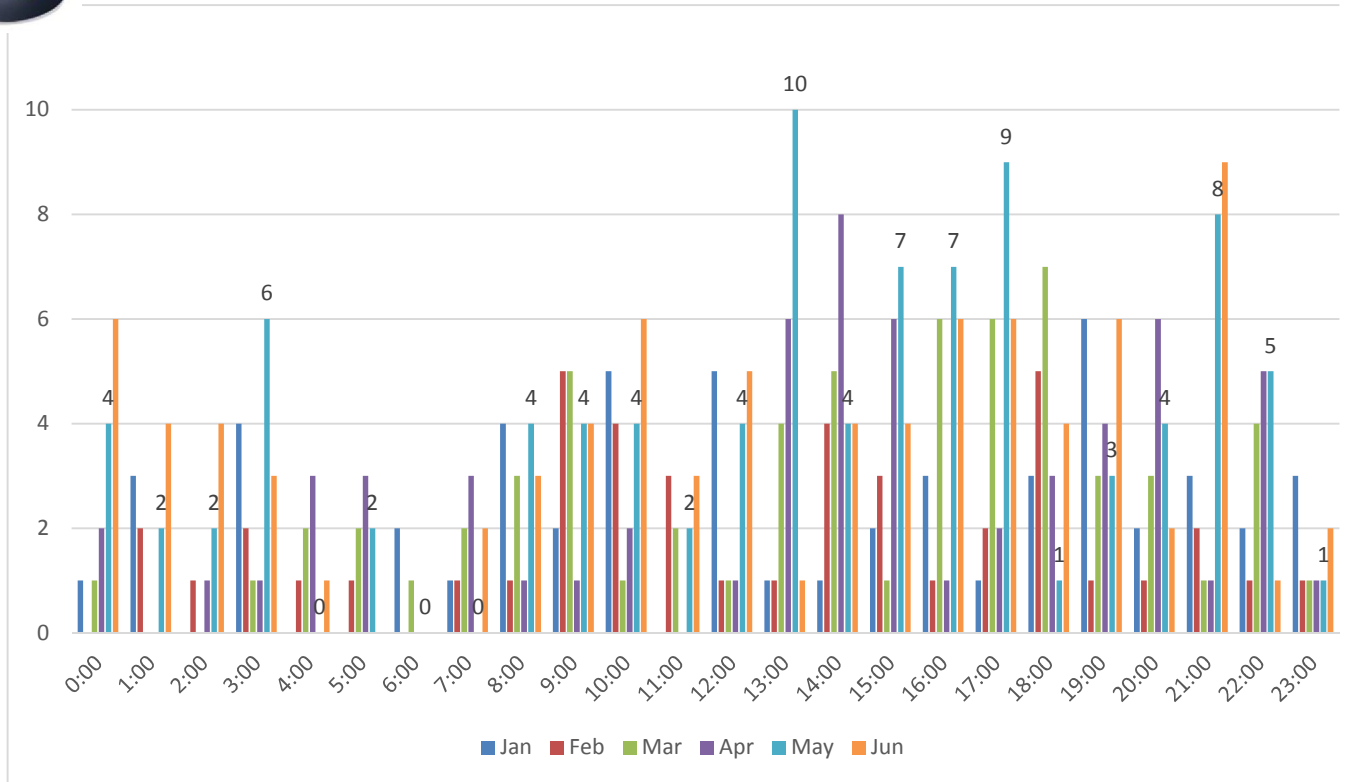


## Incident Type by Year

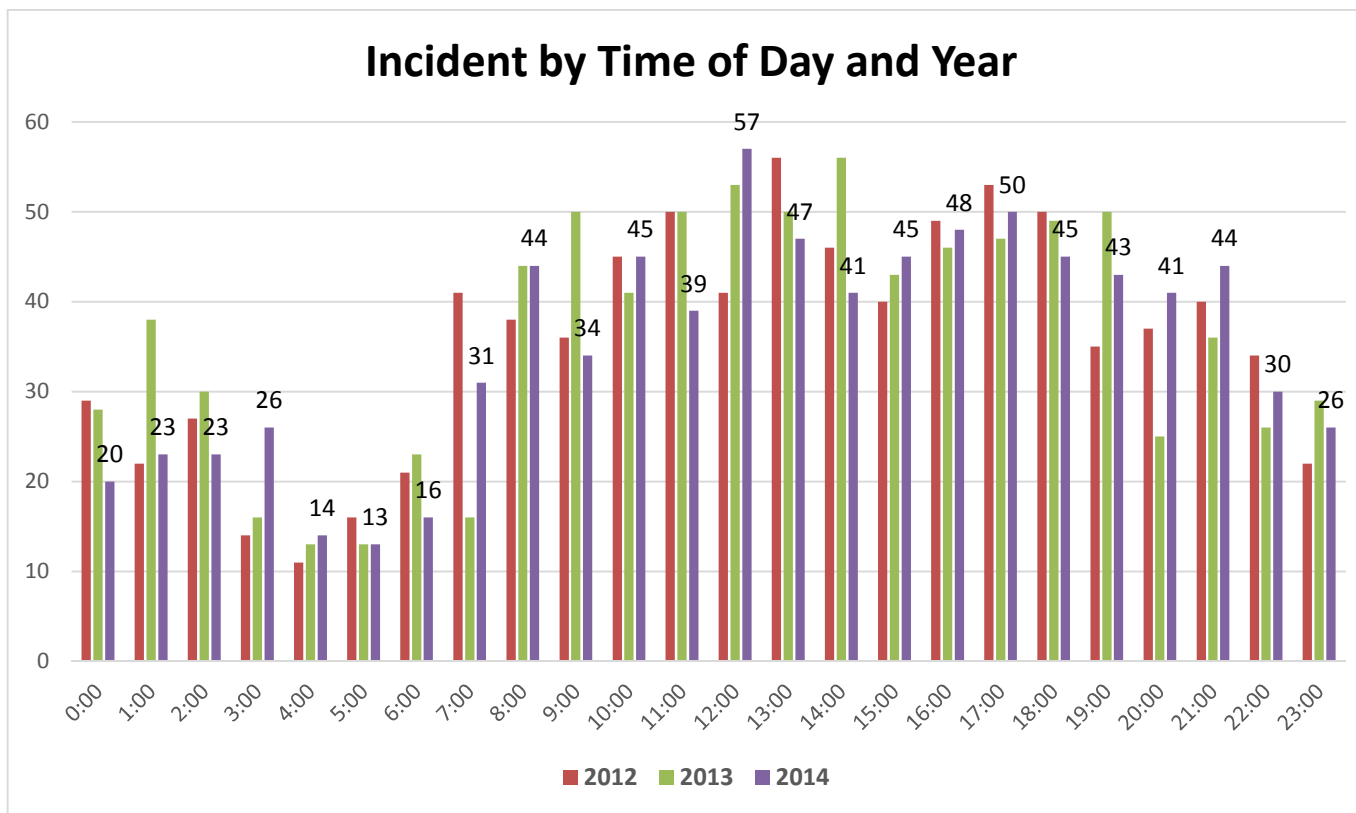




## Calls by Time of Day and Month

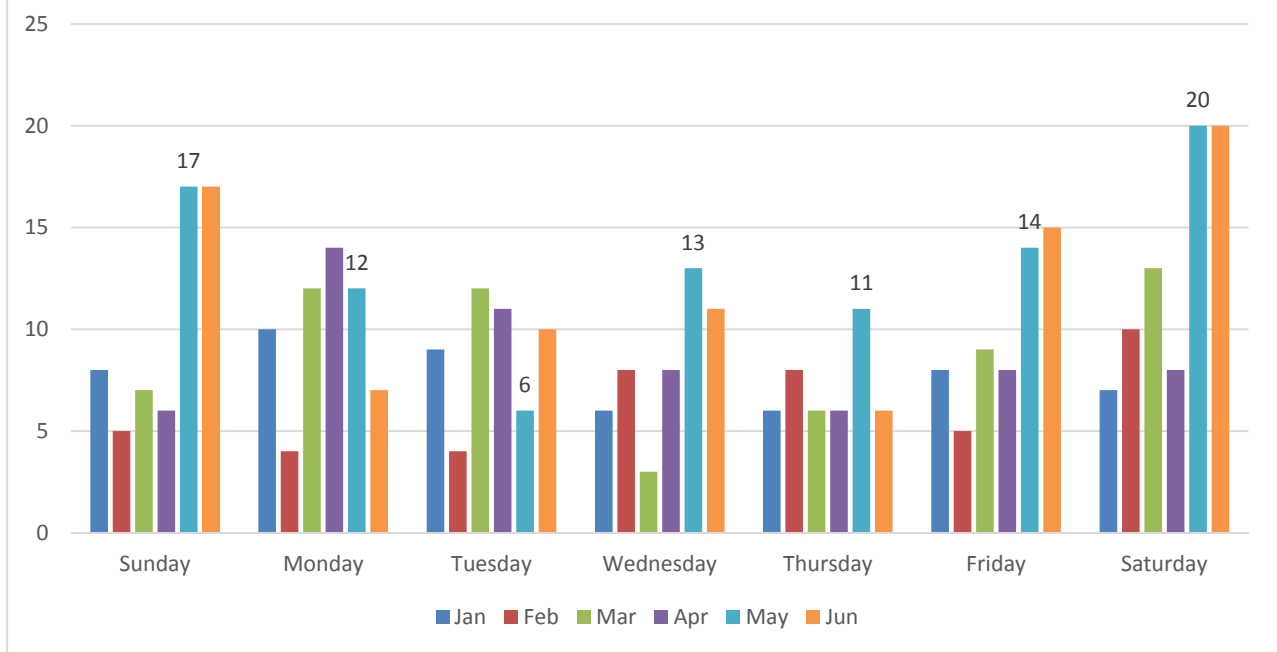


## Incident by Time of Day and Year

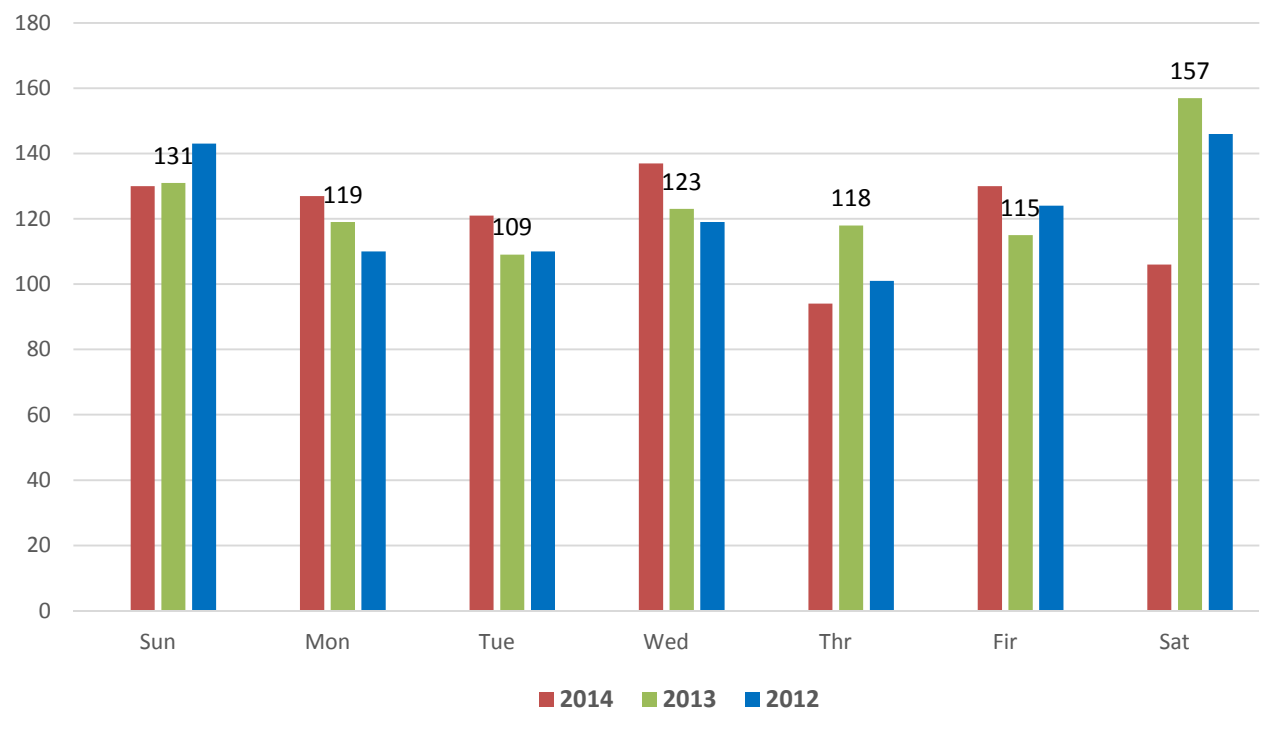




## Incident by Day of the Week



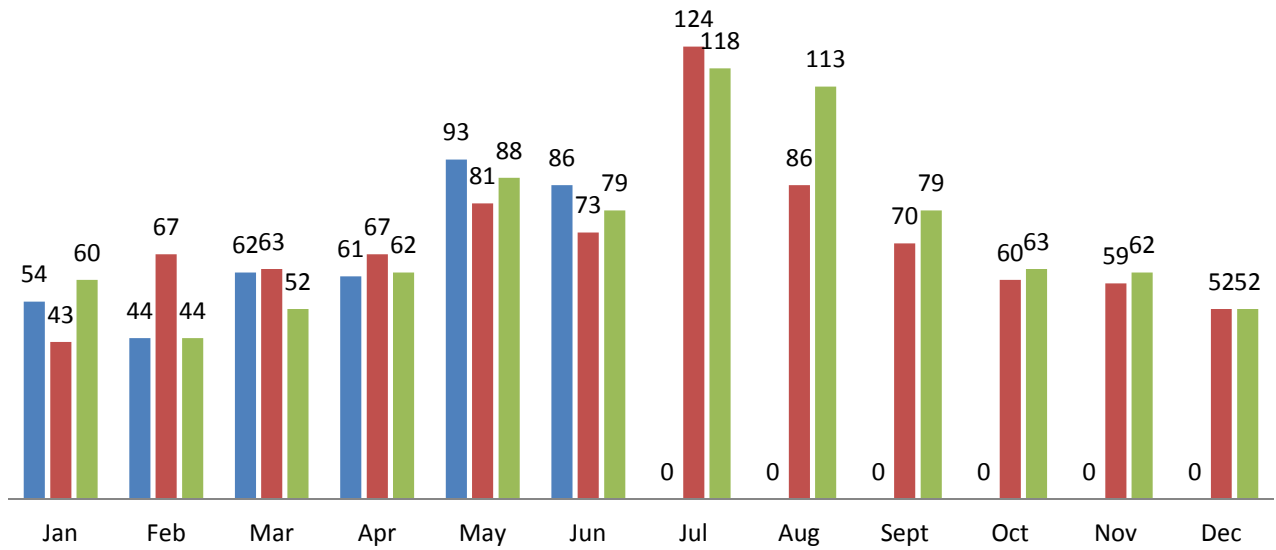
## Incident by Day of the Week and Year





## Total Incidents Per Month

■ 2015 ■ 2014 ■ 2013

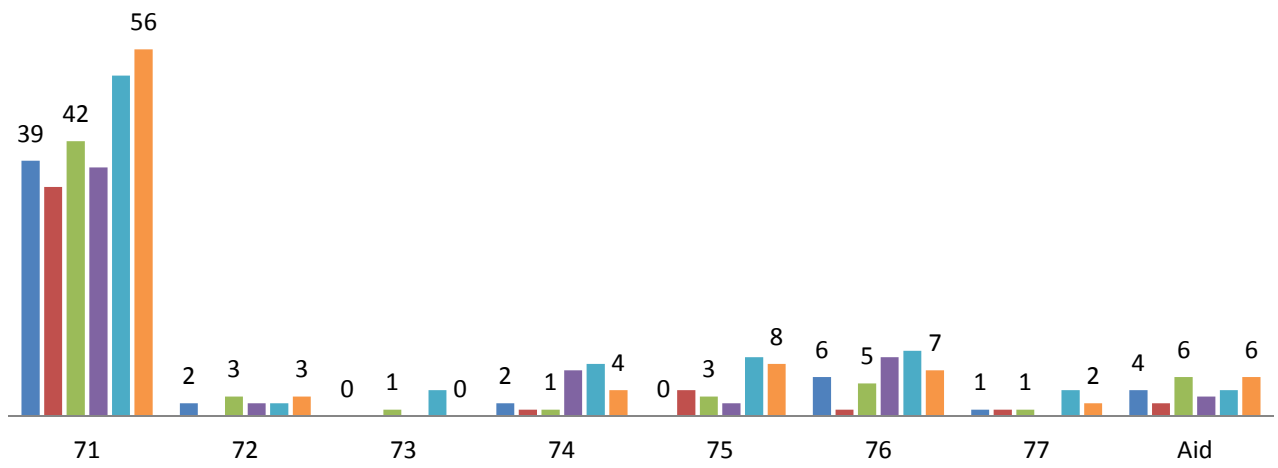


City of Wentachee

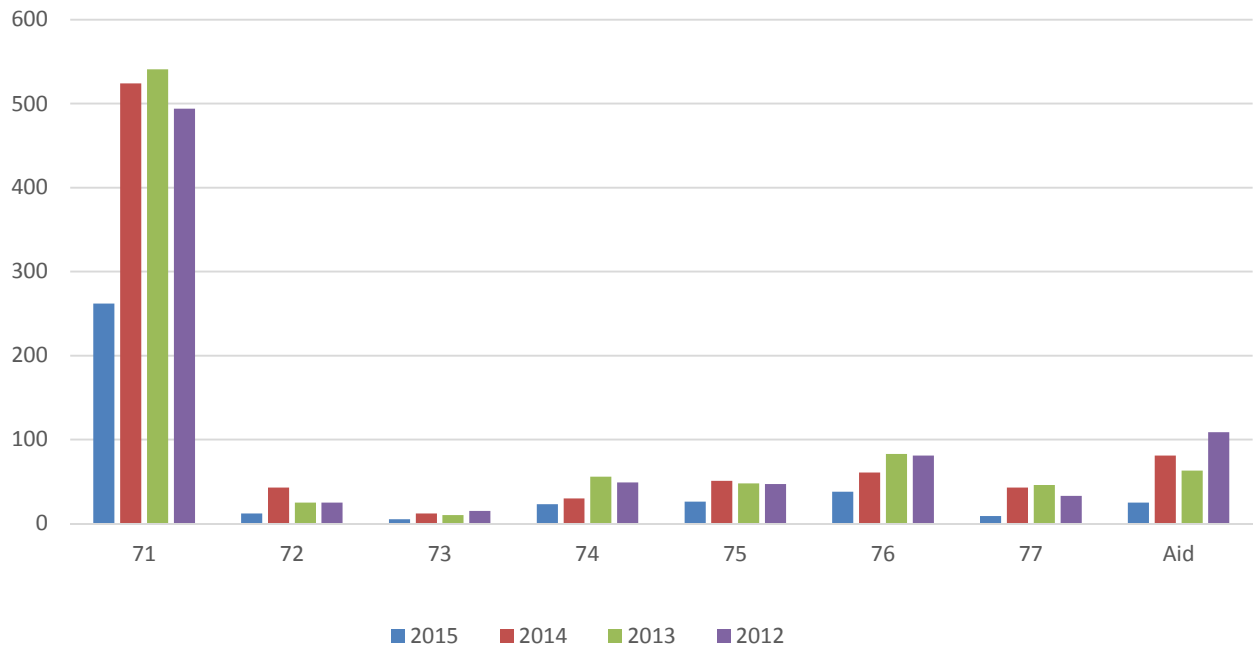


### Incident by First Due Area 2015

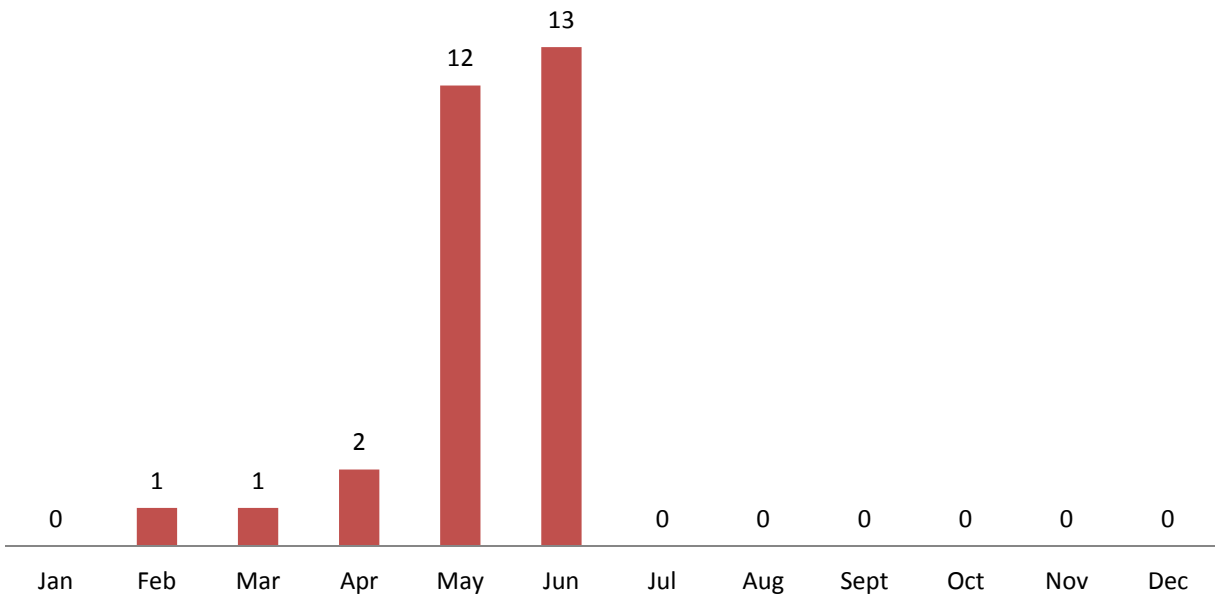
■ Jan ■ Feb ■ Mar ■ Apr ■ May ■ Jun



### Incidents By First Due Area

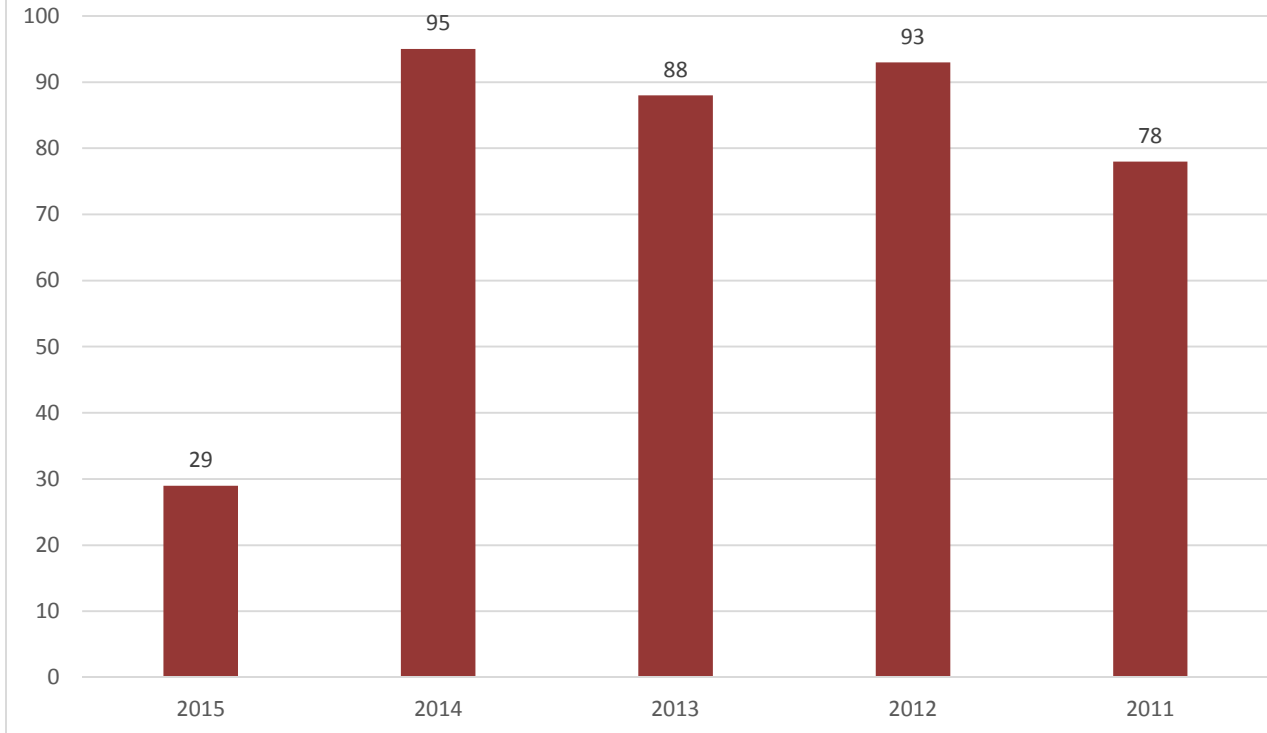


### 2015 Overlapping Incidents

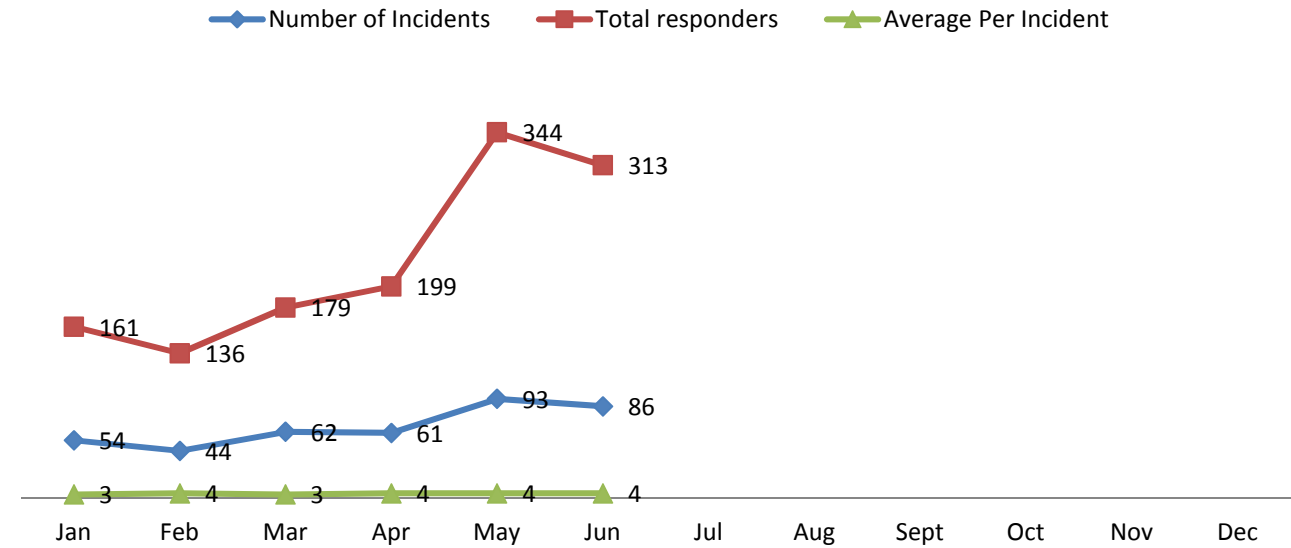




## Overlapping Incidents

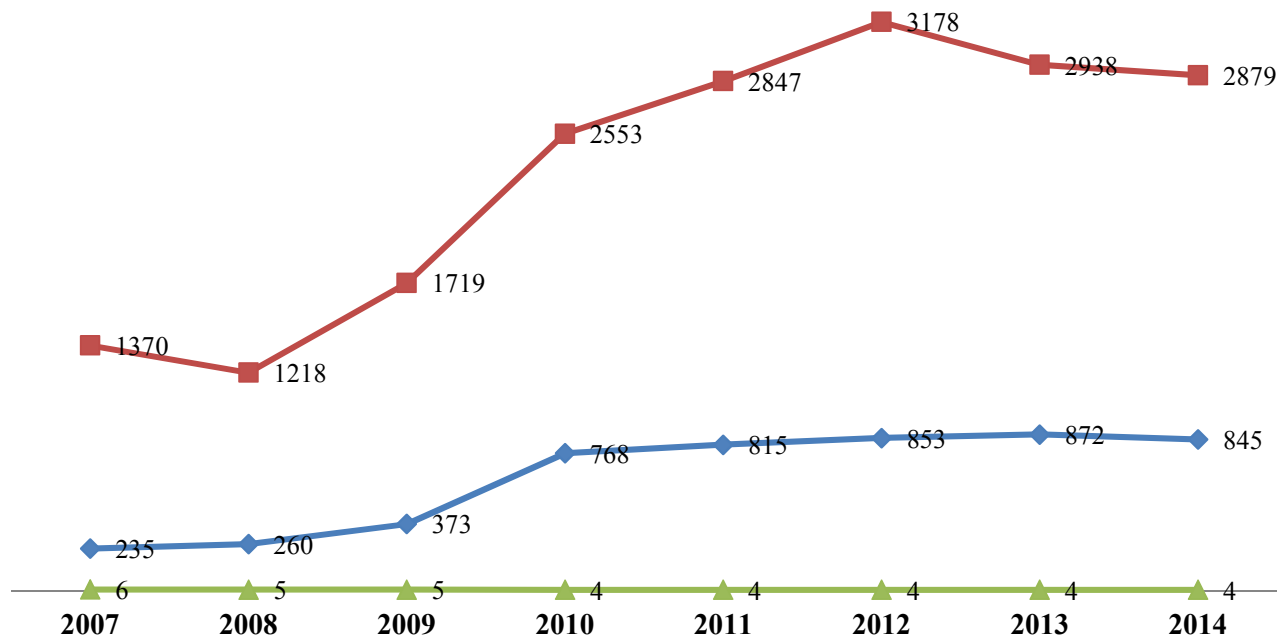


## Average Turnout Per Incident 2015

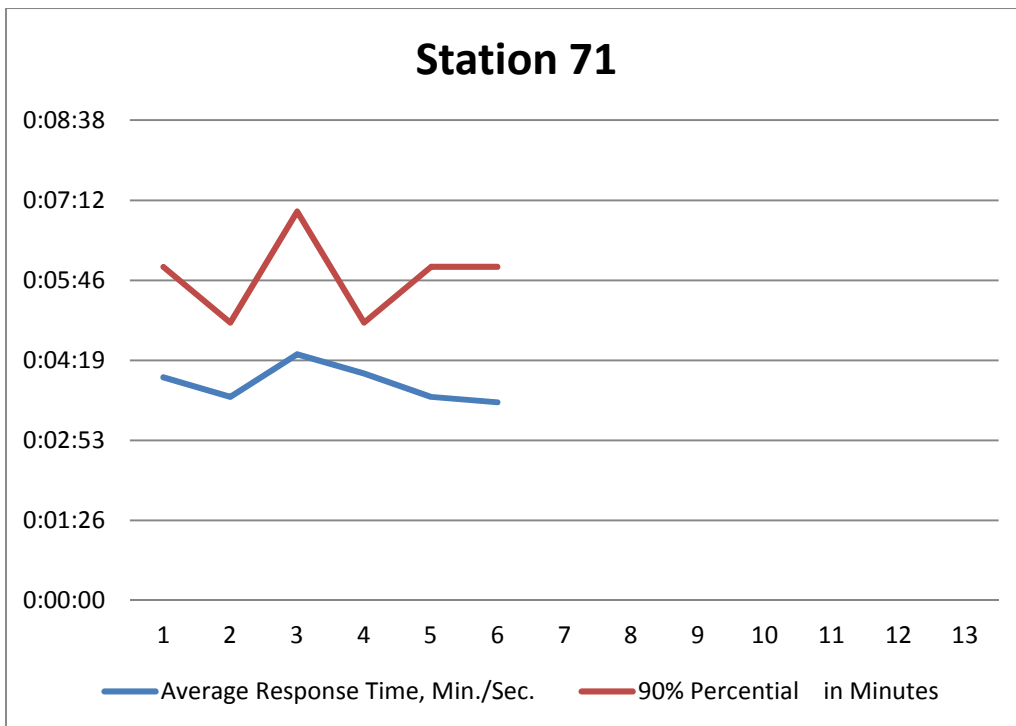


## Average Turnout Per Incident By Year

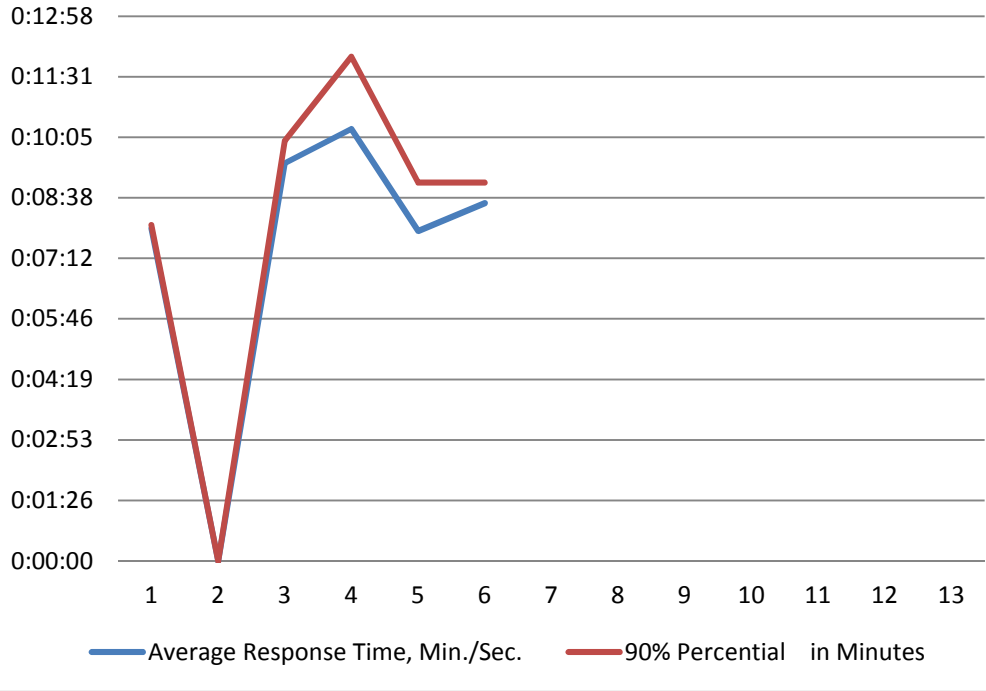
◆ Number of Incidents    ■ Total responders    ▲ Average Per Incident



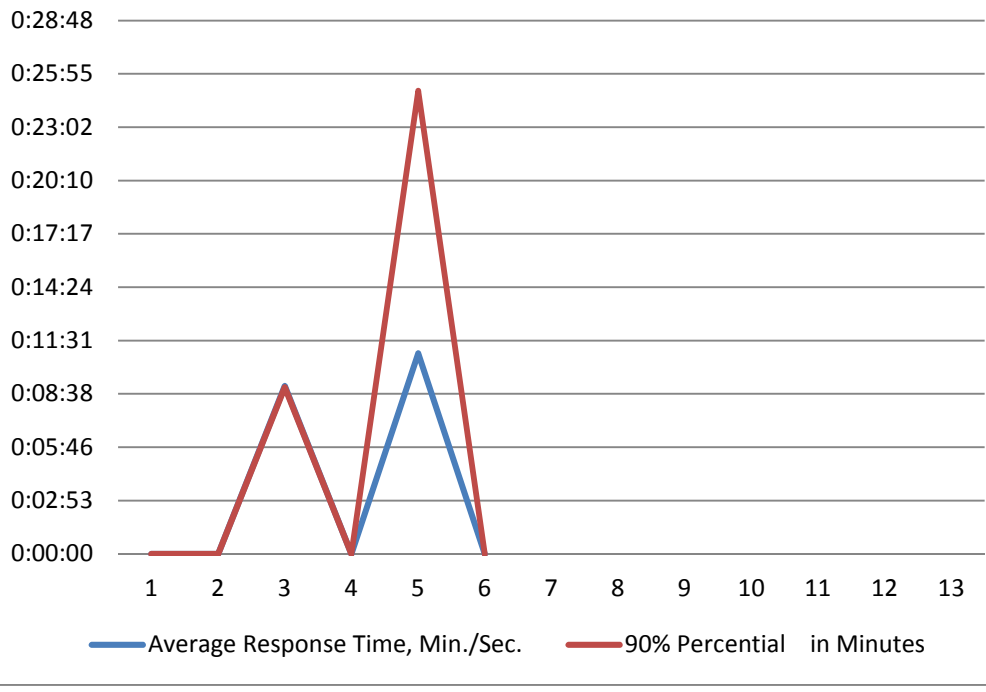
## Station 71



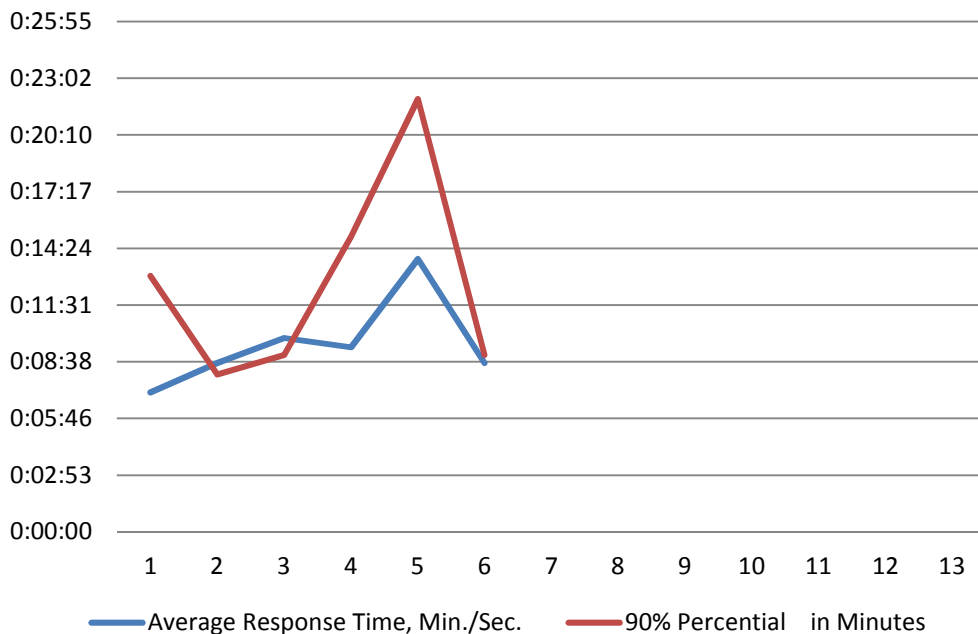
### Station 72



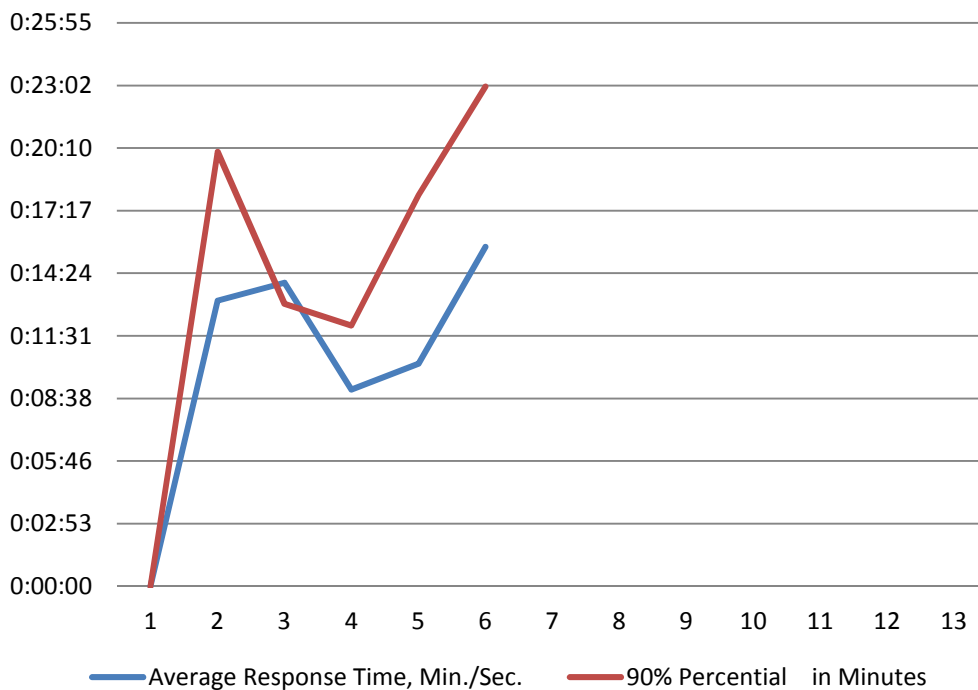
### Station 73



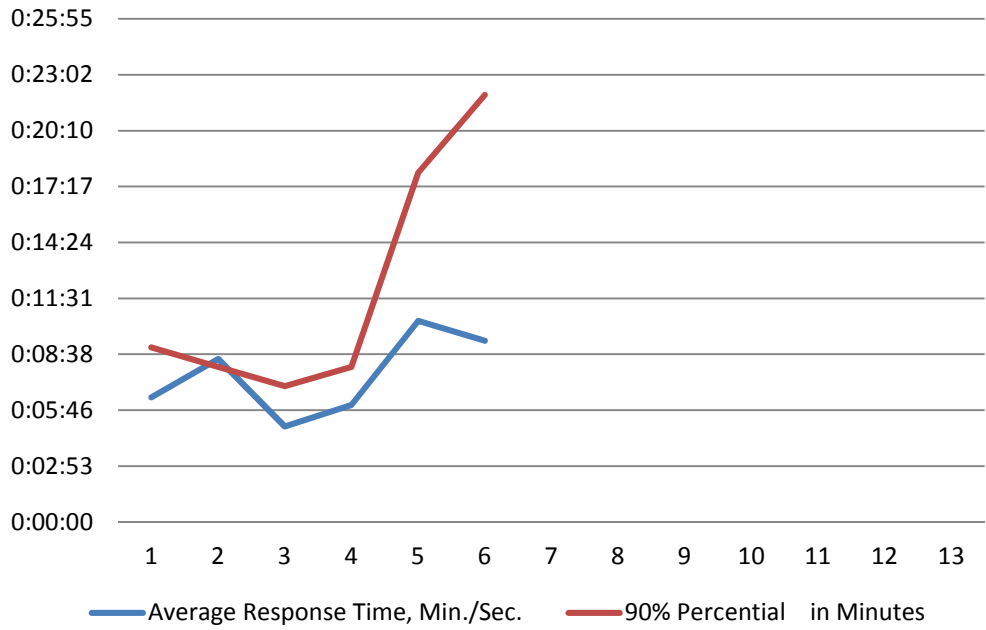
### Station 74



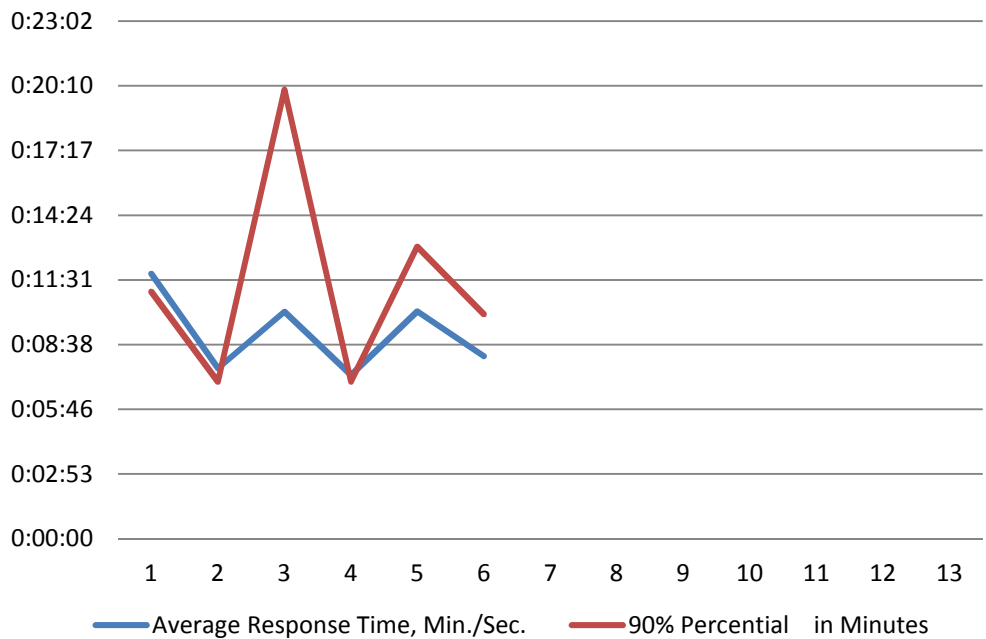
### Station 75

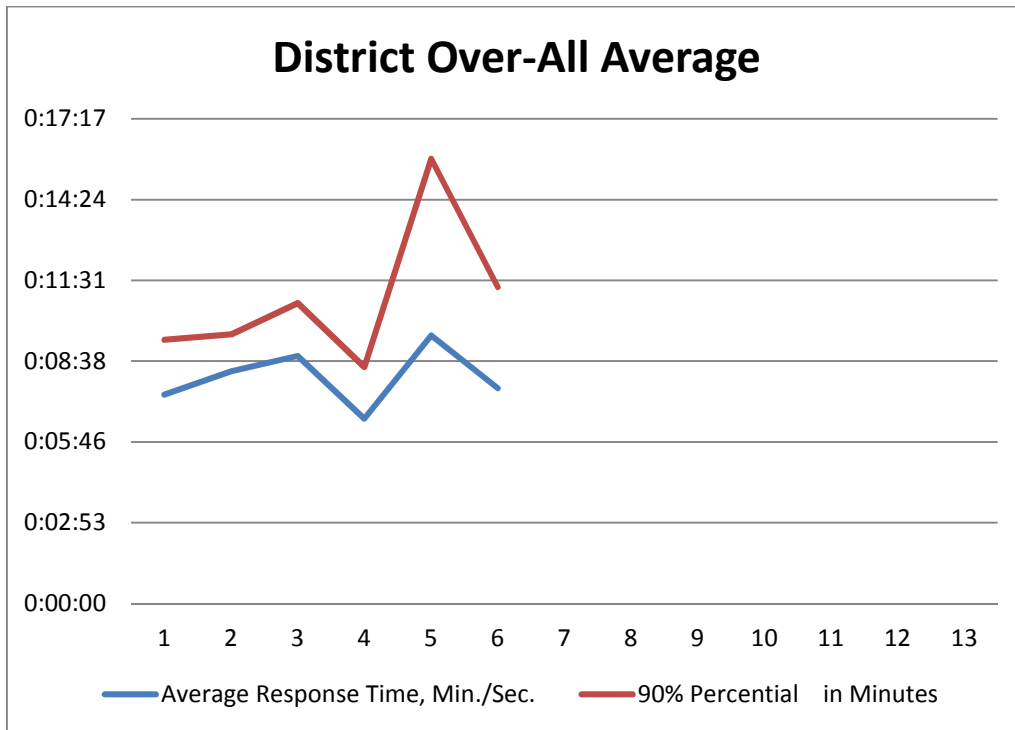


### Fire Zone 76

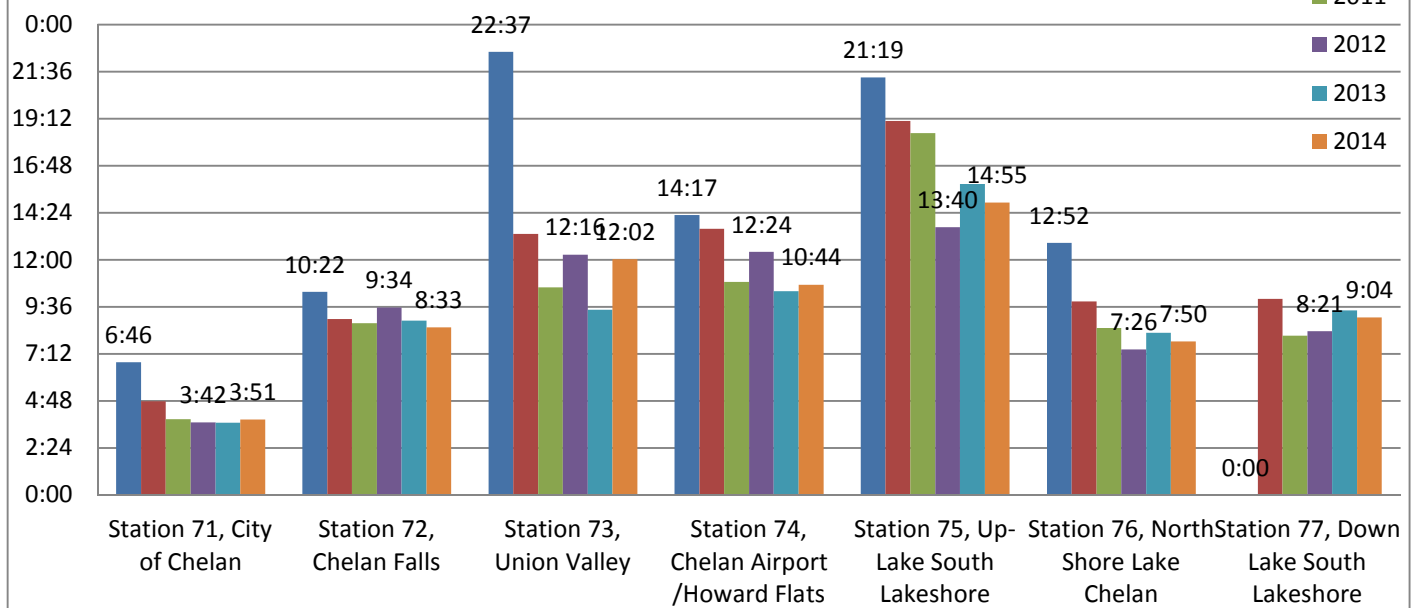


### Fire Zone 77





### Average Emergency Response Times In First Due Areas



## Public Service Announcements:

### January PSA

- Winter Recreation Safety
- Roadside Emergency Kit

### February

- Burn & Scald Prevention
- TV Tip Over Prevention

### March

- Gel Fuel Warning
- Yard Work Safety
- Spring Safety Tips

### April:

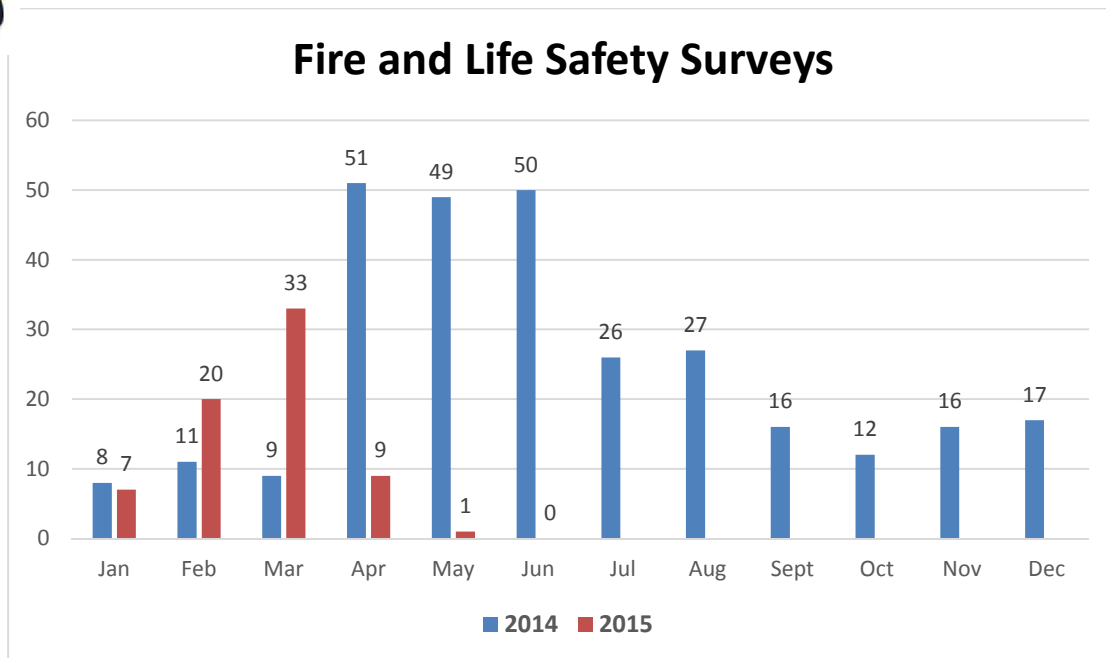
- Grilling Safety
- Home Fire Sprinklers
- Escape Planning

### May:

- Bicycle Safety
- Safer in 7: Kids Safety

### June:

- Hot Summer Days Safety
- Heat Stroke
- Fireworks Safety



# Smoke Detector Home Safety Program 2015

