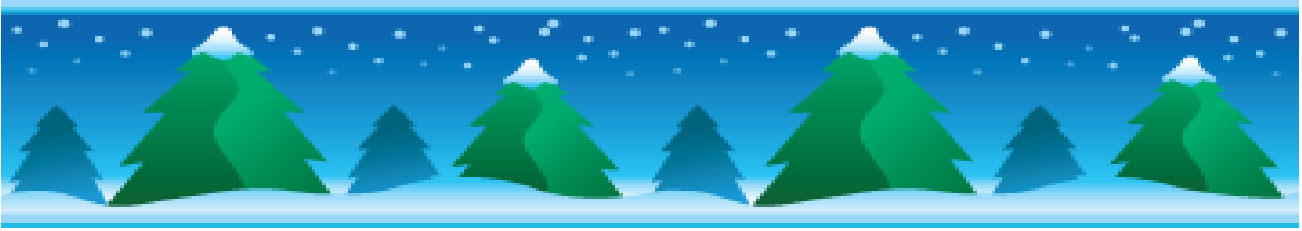


# Christmas Tree Safety



**As you deck the halls this holiday season, be fire smart. A small fire that spreads to a Christmas tree can grow large very quickly.**



## Picking the Tree

- » Choose a tree with fresh, green needles that do not fall off when touched.



## Placing the Tree

- » Before placing the tree in the stand, cut 1-2" from the base of the trunk.
- » Make sure the tree is at least three feet away from any heat source, like fireplaces, radiators, candles, heat vents or lights.
- » Make sure the tree is not blocking an exit.
- » Add water to the tree stand. Be sure to add water daily.



## Lighting the Tree

- » Use lights that have the label of an independent testing laboratory. Some lights are only for indoor or outdoor use.
- » Replace any string of lights with worn or broken cords or loose bulb connections. Connect no more than three strands of mini string sets and a maximum of 50 bulbs for screw-in bulbs. Read manufacturer's instructions for number of LED strands to connect.
- » Never use lit candles to decorate the tree.
- » Always turn off Christmas tree lights before leaving home or going to bed.

[www.nfpa.org/education](http://www.nfpa.org/education)

## AFTER CHRISTMAS

Get rid of the tree after Christmas or when it is dry. Dried-out trees are a fire danger and should not be left in the home or garage or placed outside against the home. Check with your local community to find a recycling program. Bring outdoor electrical lights inside after the holidays to prevent hazards and make them last longer.



## FACTS

One of every three home Christmas tree fires are caused by electrical problems.

Although Christmas tree fires are not common, when they do occur, they have a higher chance to be deadly.

A heat source too close to the tree causes one in every five of the fires.



Chelan Fire & Rescue  
P.O. Box 1317, 232 E. Wapato Ave.  
Chelan, WA 98816  
[www.chelan7.com](http://www.chelan7.com)  
509-682-4476