



CHELAN FIRE AND RESCUE

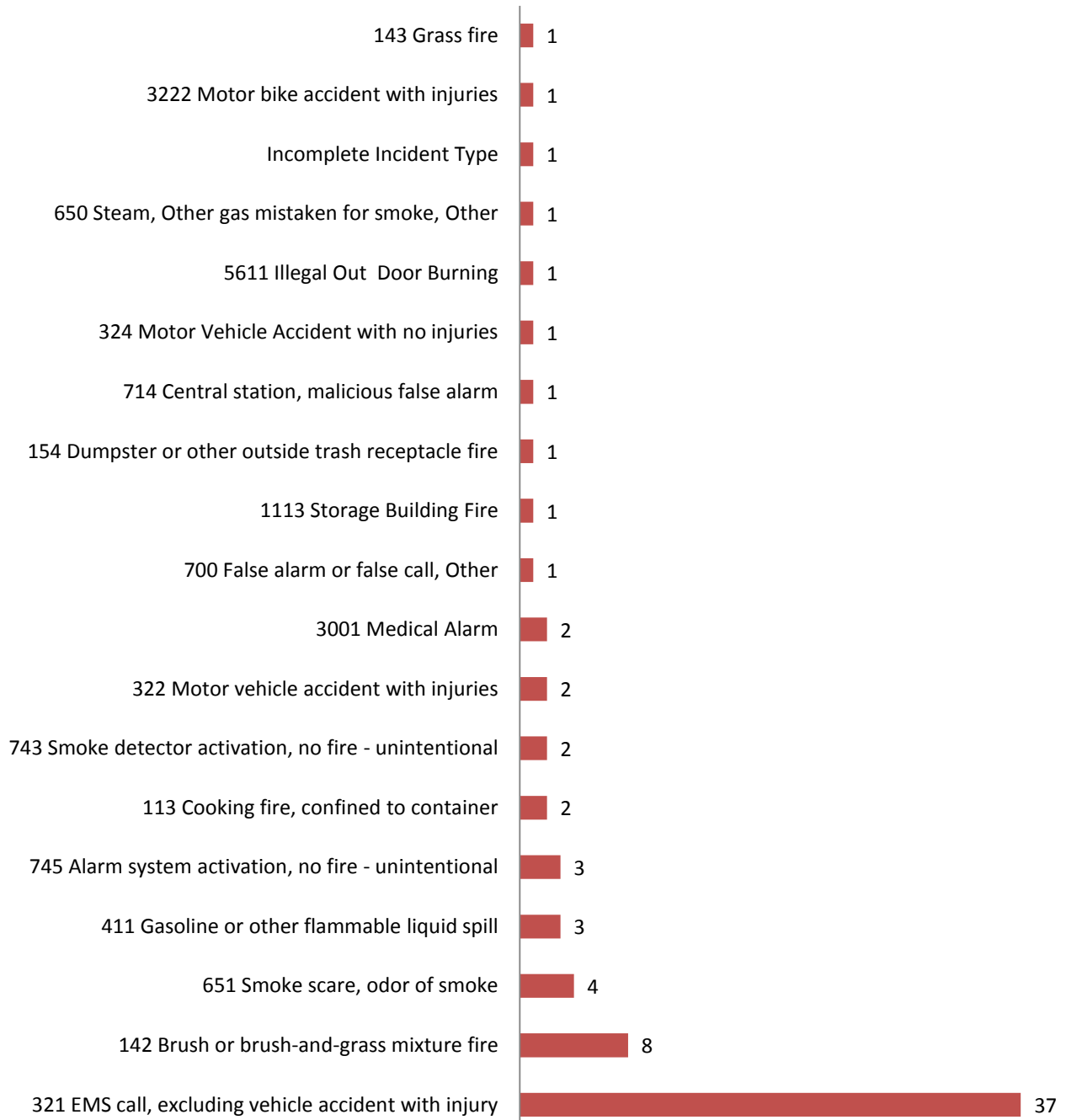


Emergency Response Report June 2014



Incident Types June 2014

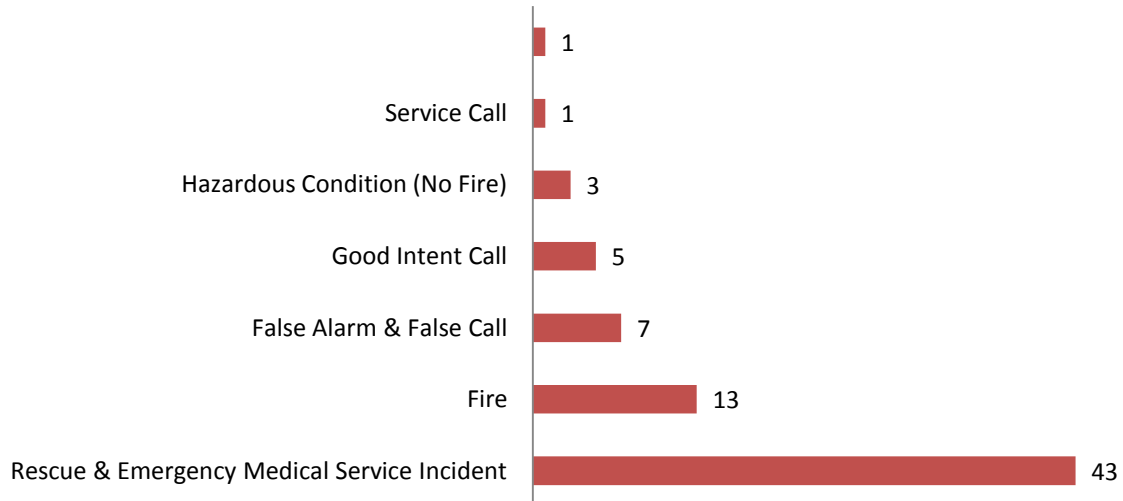
■ Number of Incidents 73





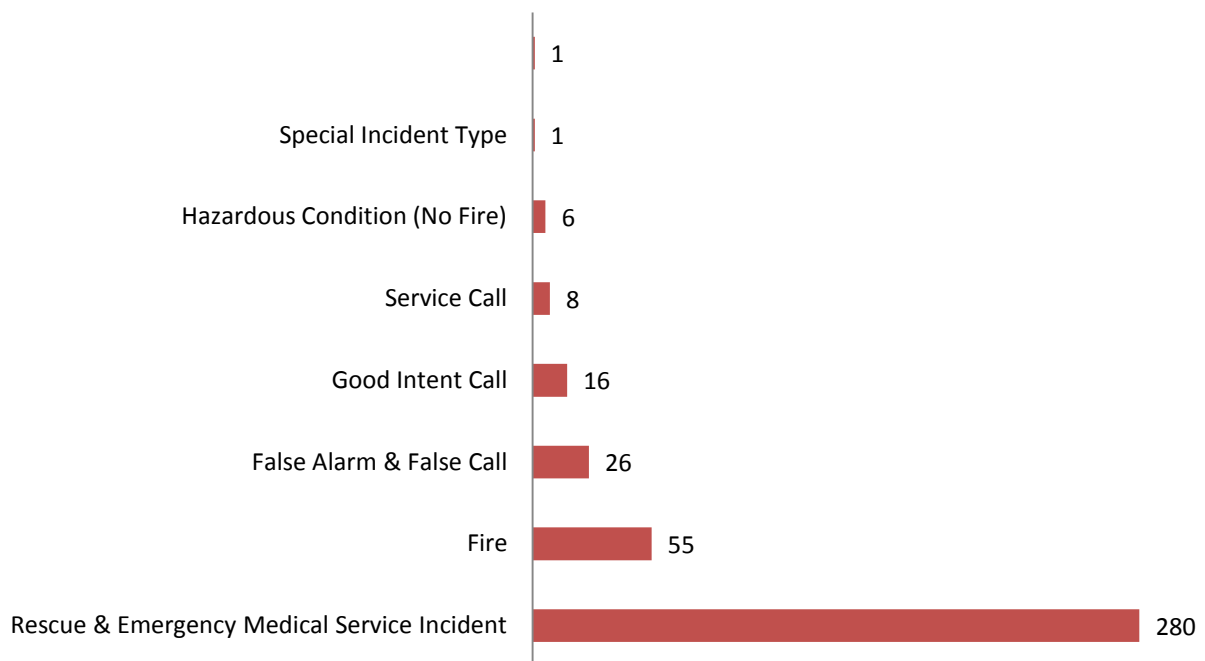
Incident Types by Group June 2014

■ Number of Incidents 73



Incident Types by Group June 2014

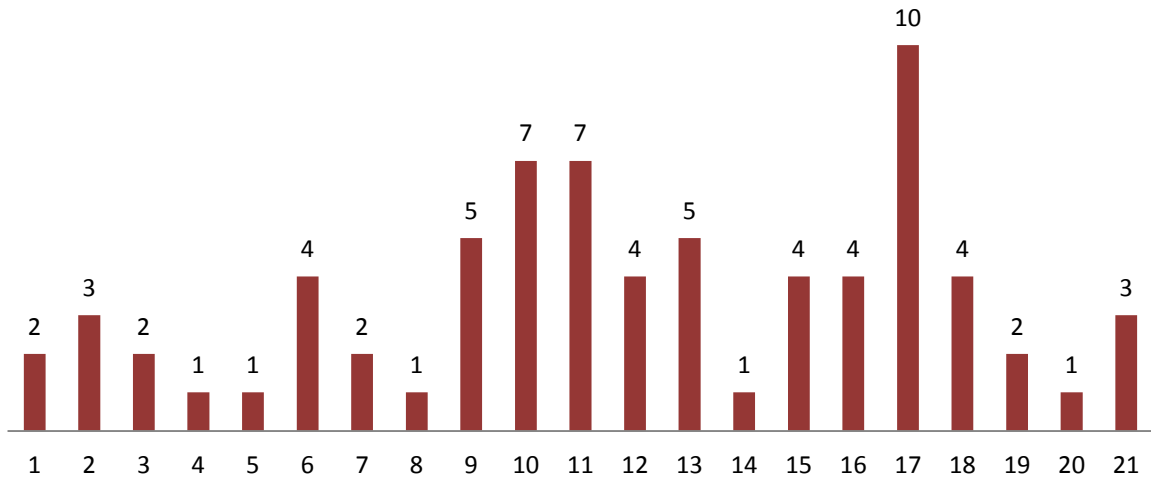
■ Number of Incidents 393





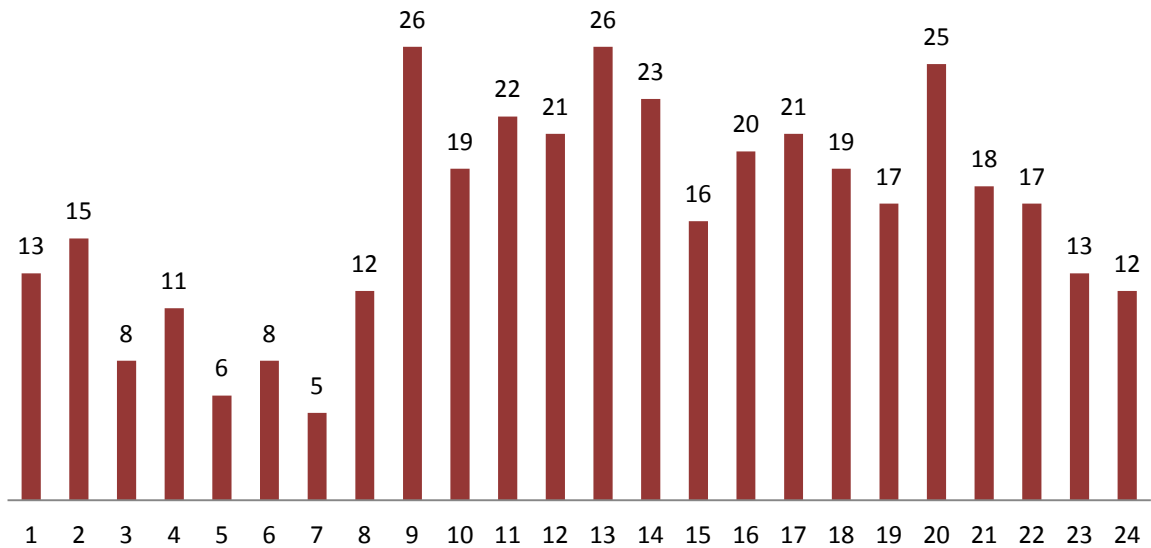
Incident by Hour of the Day June 2014

■ Total Incidents 73



Incidents by Hour of the Day Year - To - Date

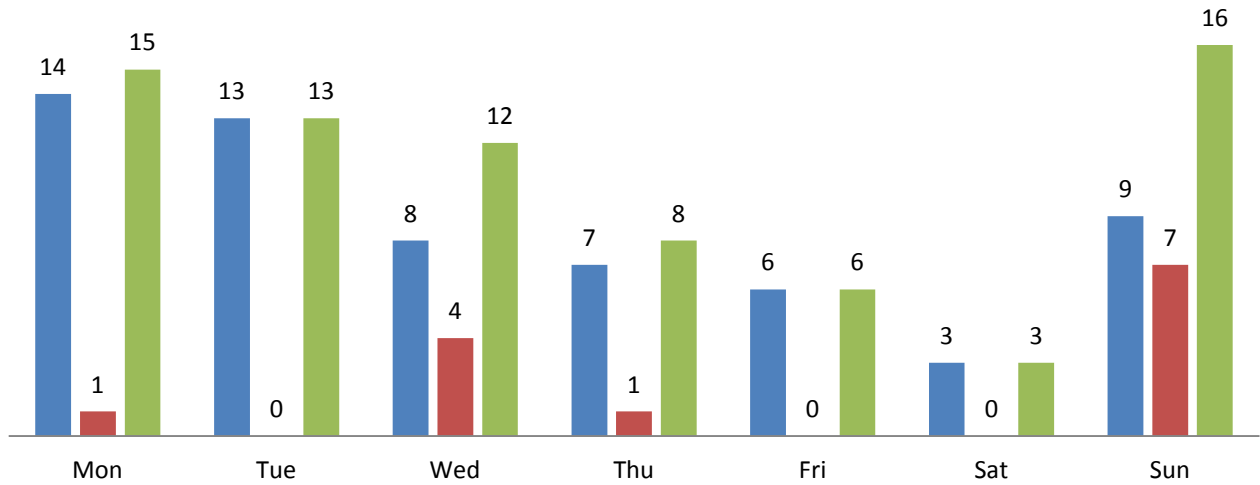
■ Total Incidents 393





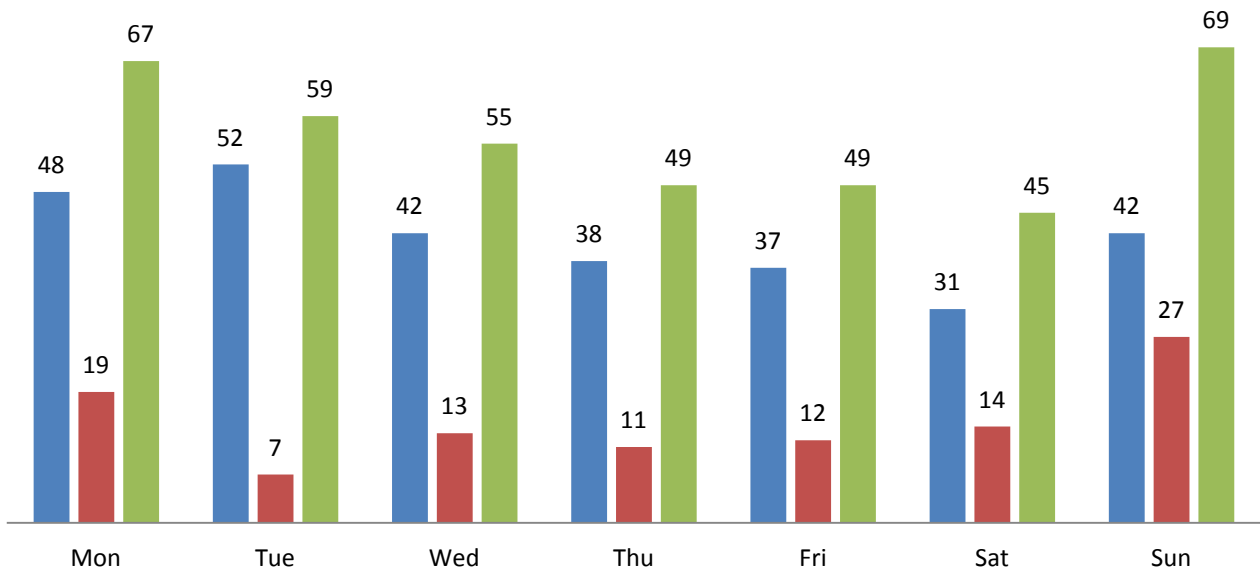
Day vs. Night Calls by Day of the Week June 2014

■ Day ■ Night ■ Total



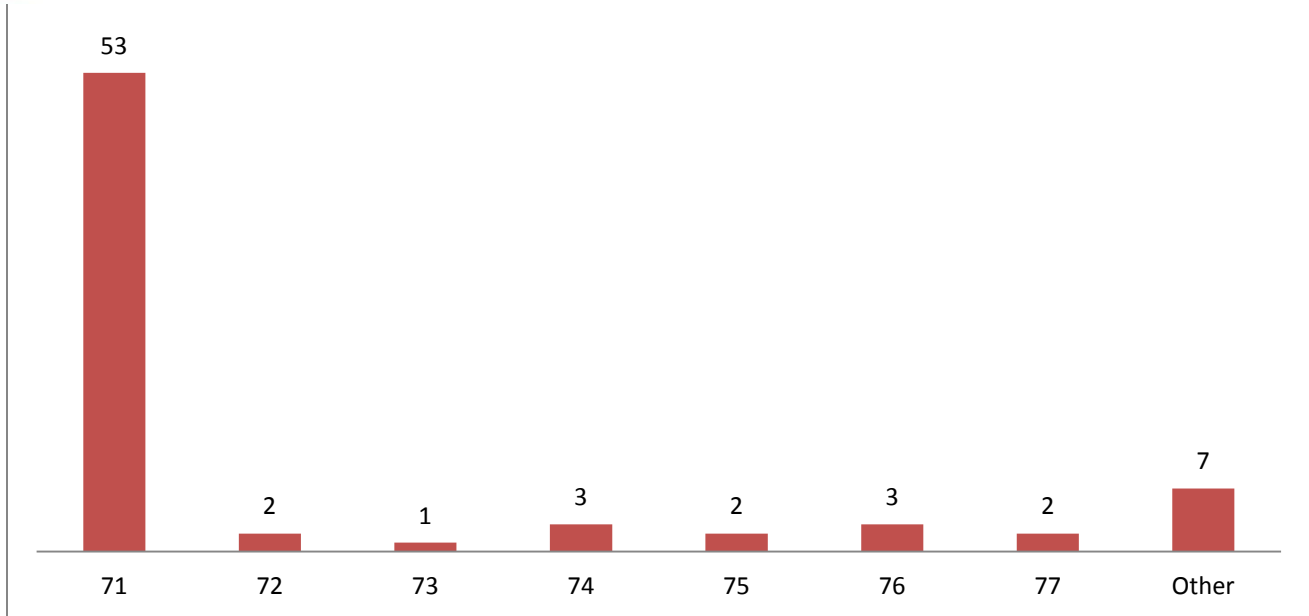
Day vs. Night by Day of the Week Year - To -Date

■ Day ■ Night ■ Total

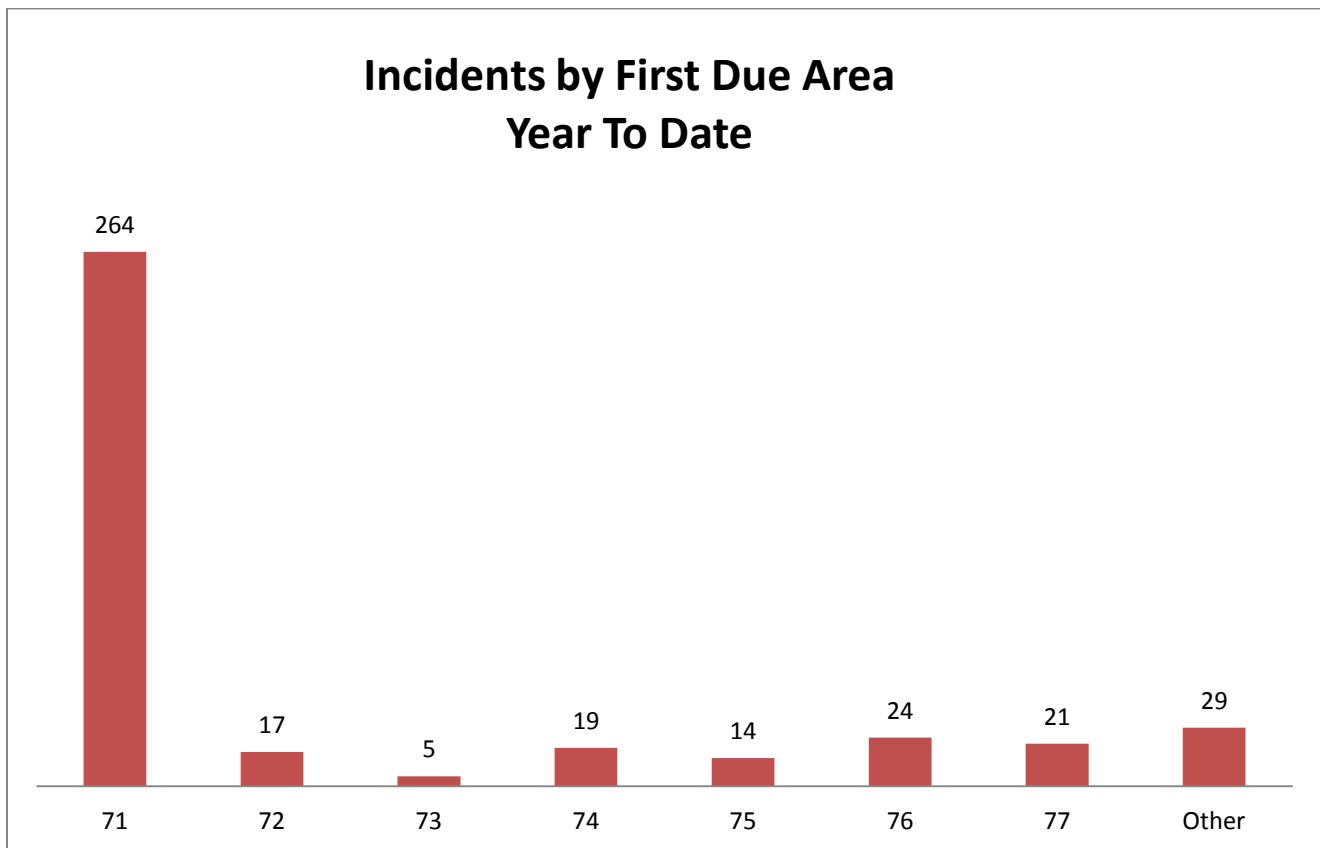




Incident by First Due Area June 2014

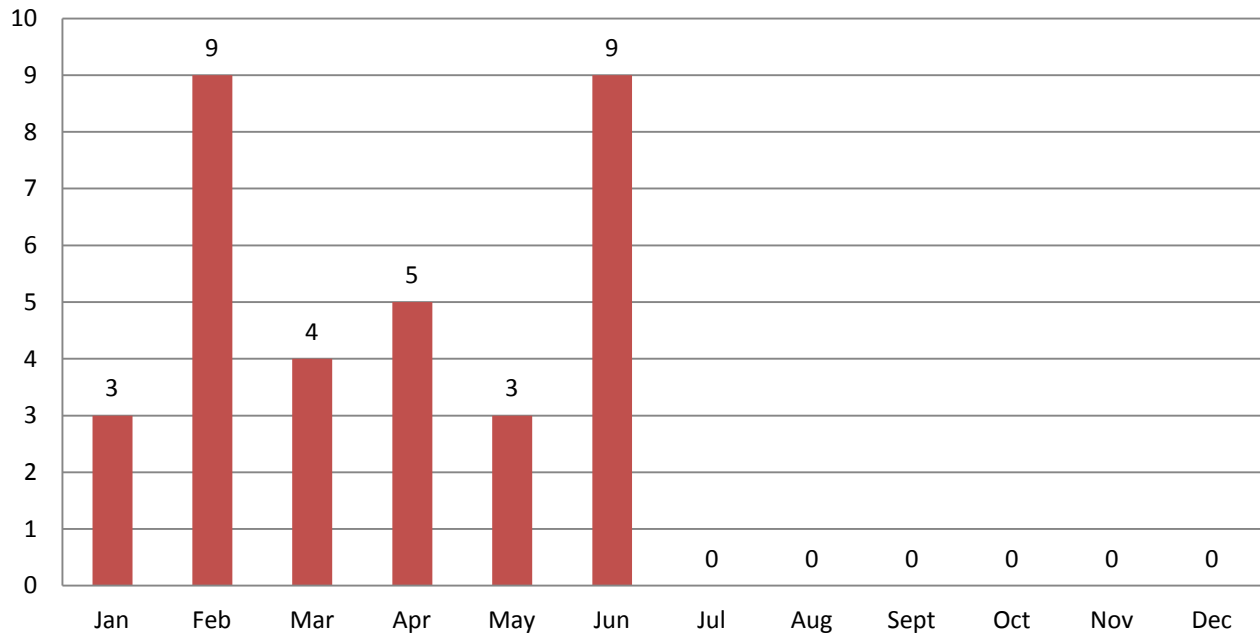


Incidents by First Due Area Year To Date



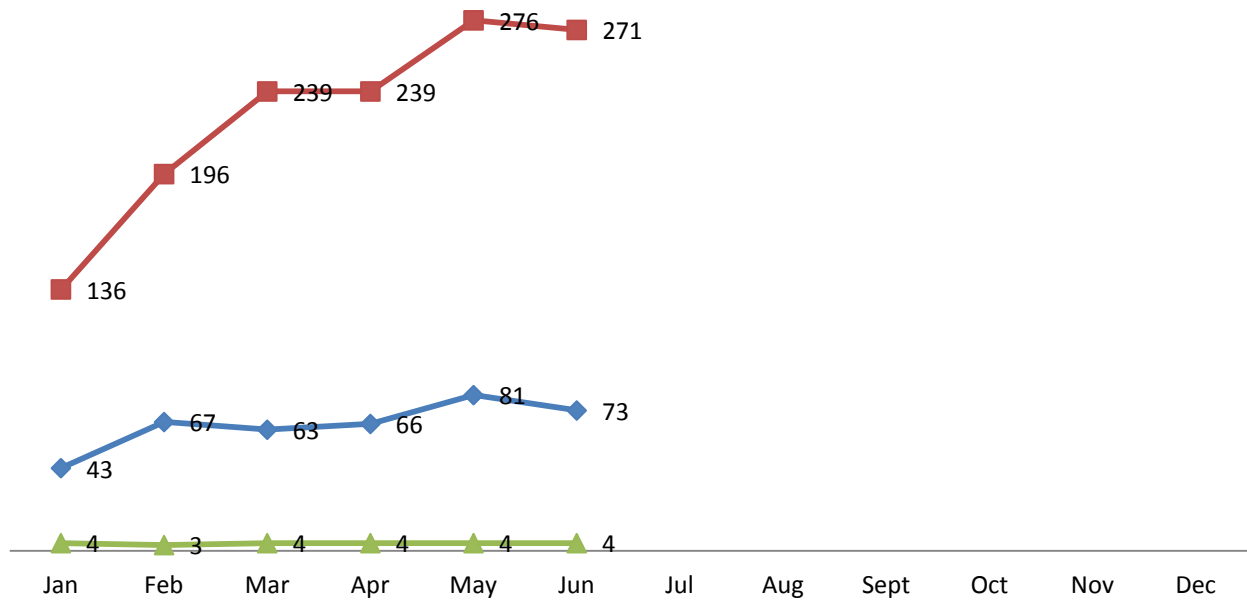


2014 Overlapping Incidents



Average Turnout Per Incident 2014

◆ Number of Incidents ■ Total responders ▲ Average Per Incident





Total Incidents by Month and Year

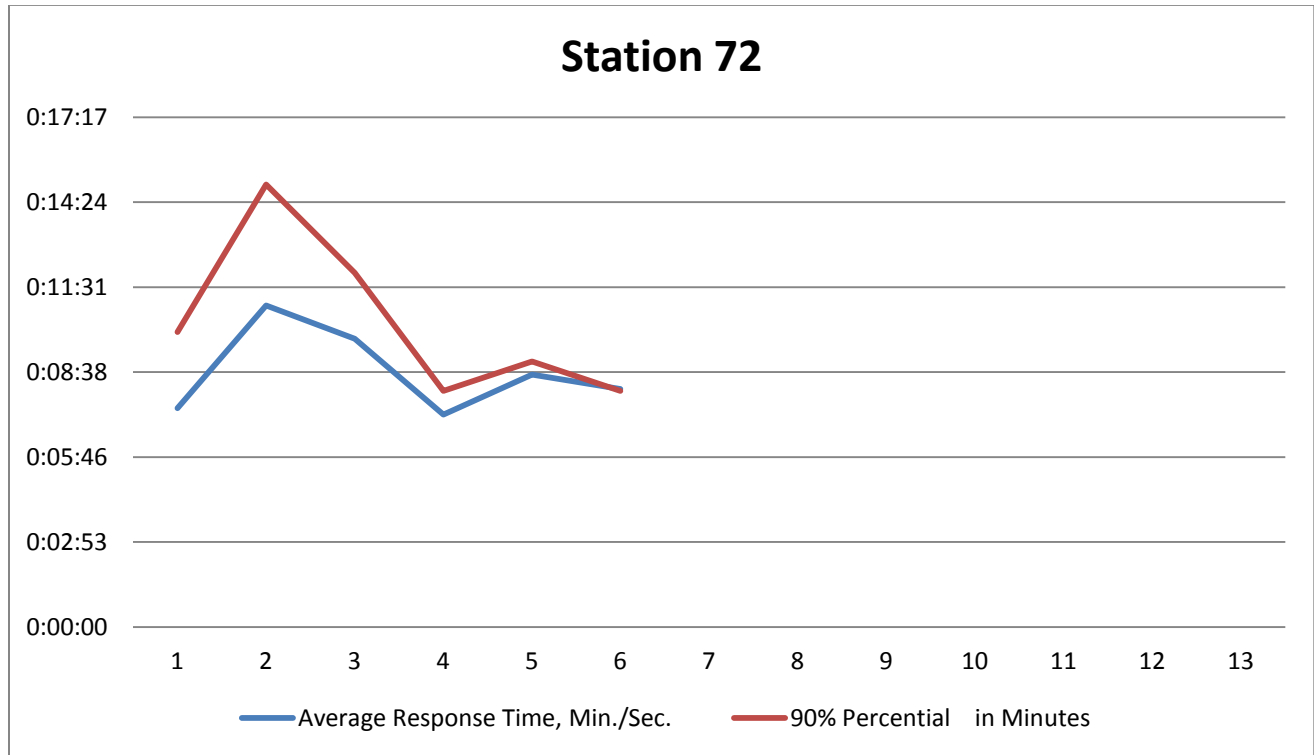
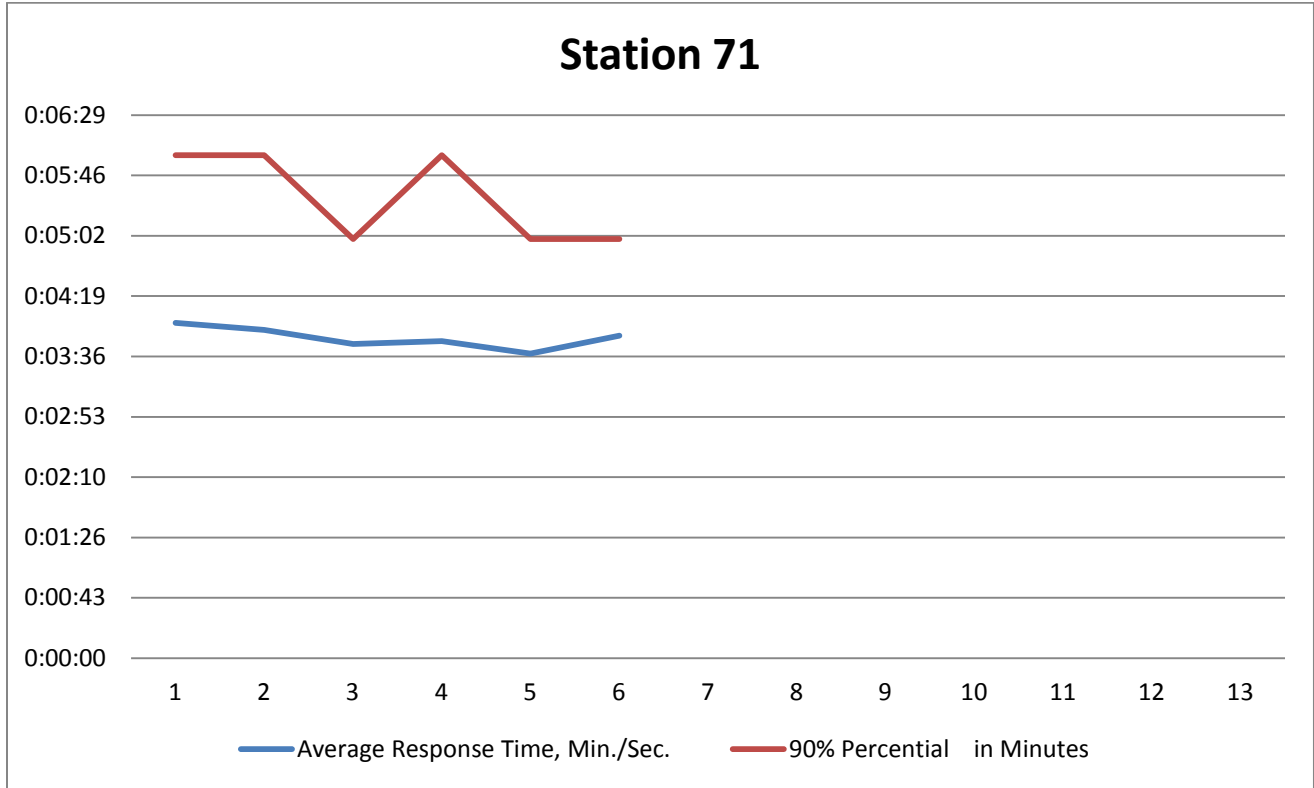
	Jan	Feb	Mar	Apr	May	Jun	Jul	Aug	Sept	Oct	Nov	Dec	Total
2014	43	67	63	66	81	73							393
2013	60	44	52	62	88	79	118	113	79	62	62	52	871
2012	48	63	50	48	71	71	120	120	90	69	47	56	853
2011	53	34	59	61	71	70	91	107	76	61	82	50	815
2010	56	46	52	57	85	61	106	87	49	64	49	56	768
2009	11	13	15	19	28	31	36	45	31	39	51	54	373
3 Year Average	50	58	55	59	80	73	110	113	82	64	64	54	846

Total Incidents Per Month

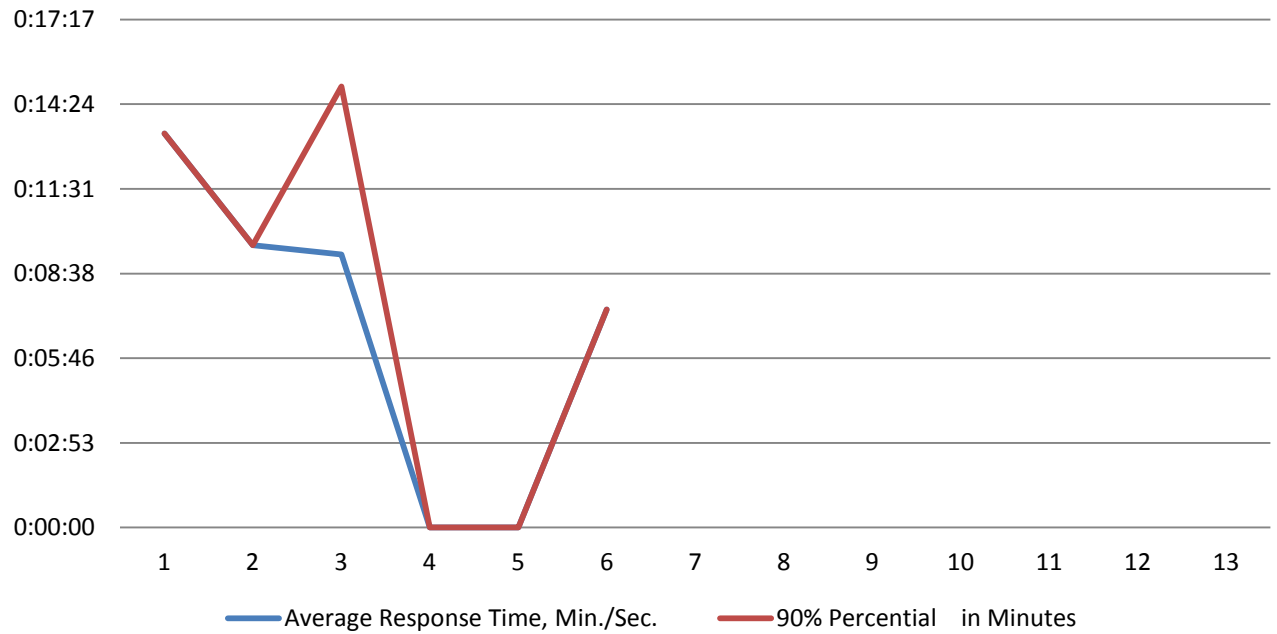
■ 2014 ■ 2013 ■ 2012



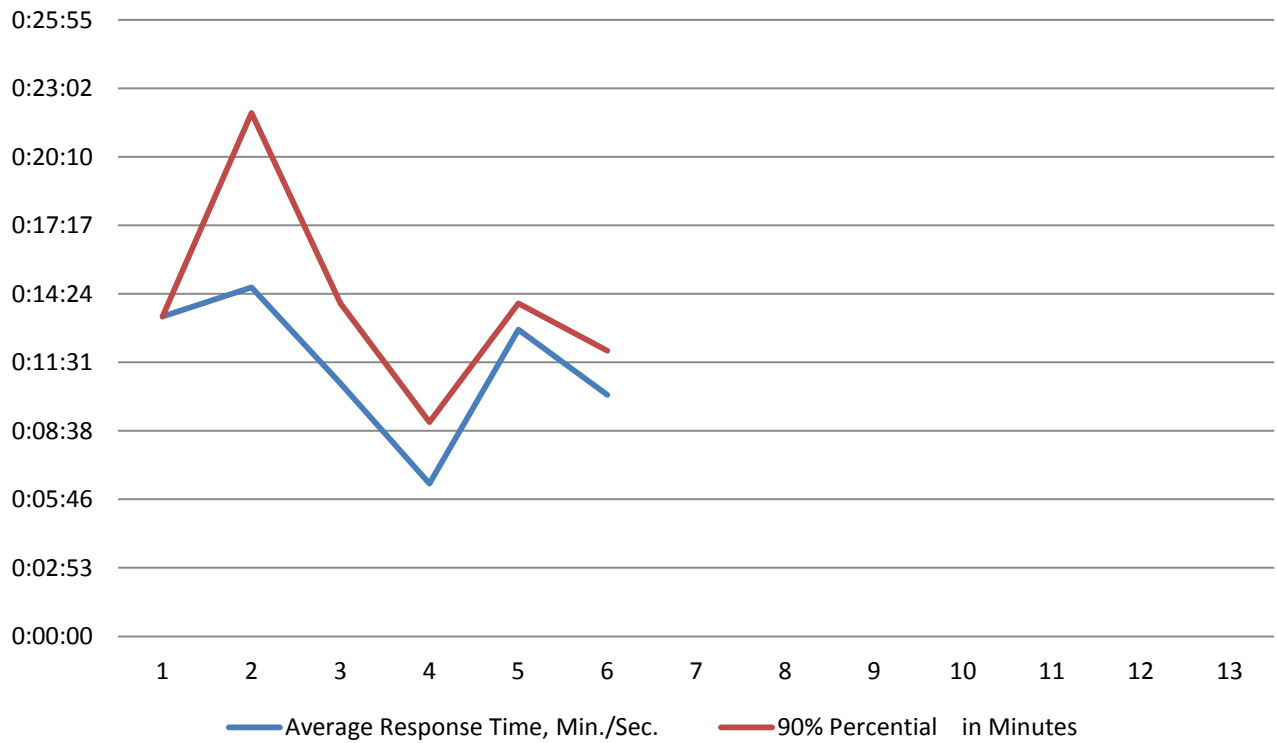
Emergency Response Average and 90% Arrival Times



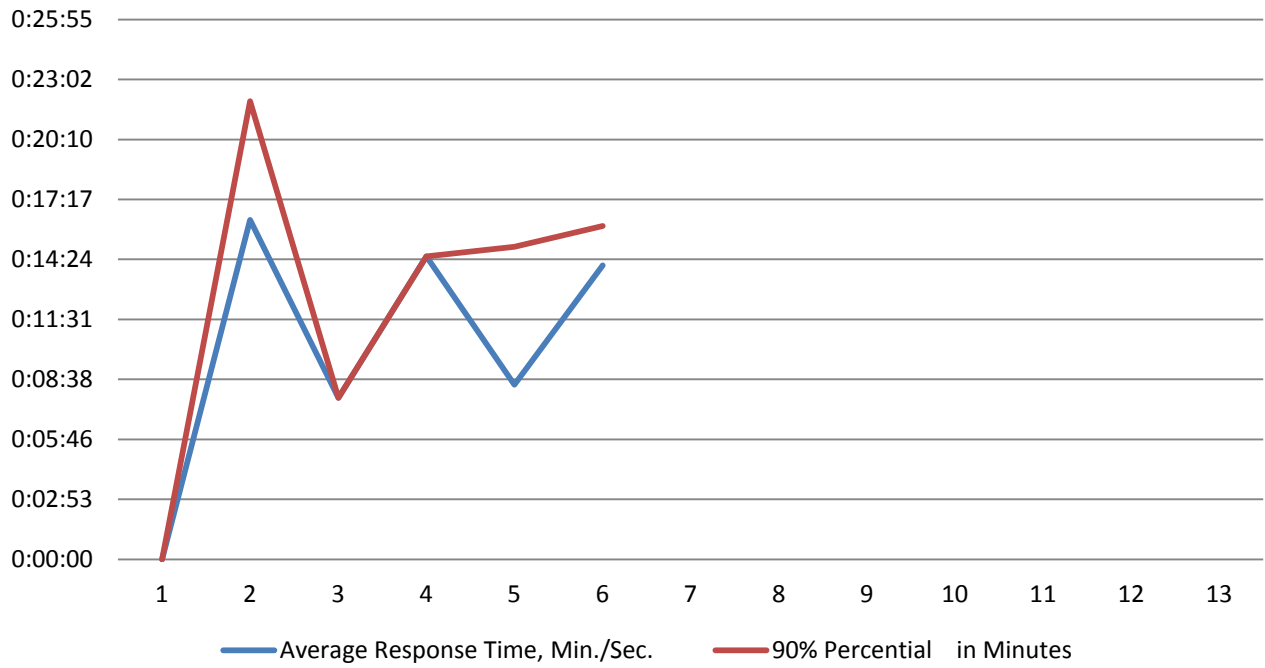
Station 73



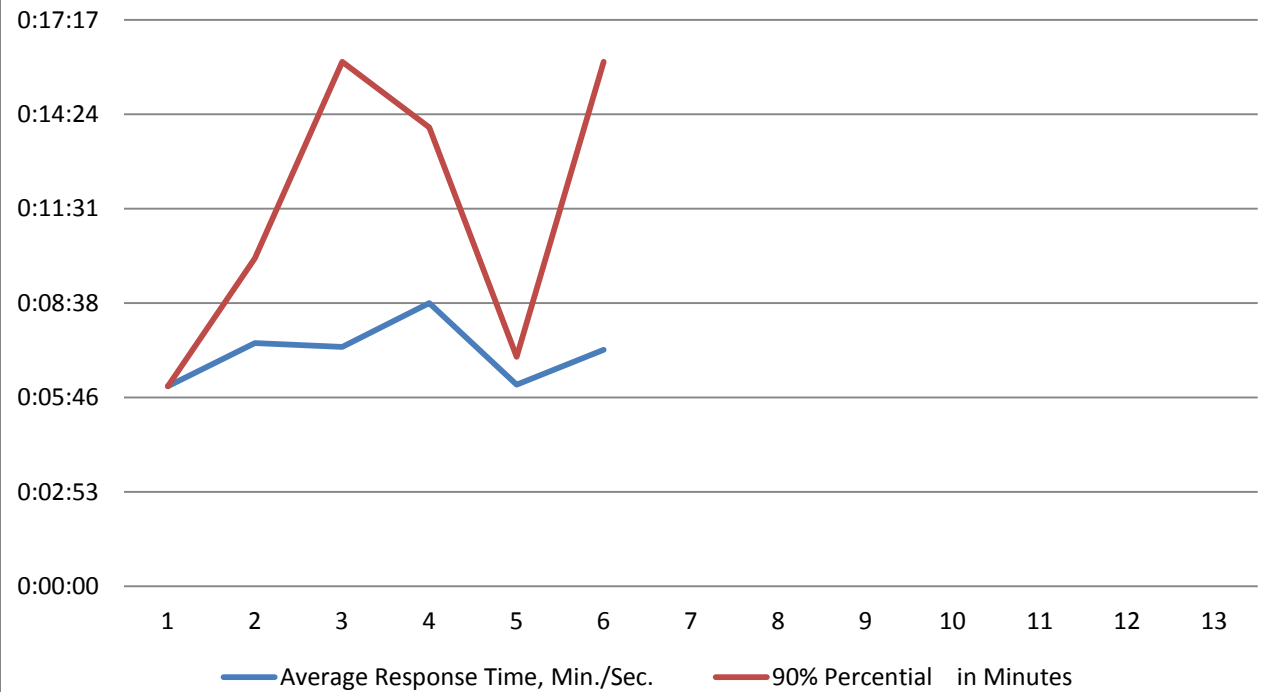
Station 74

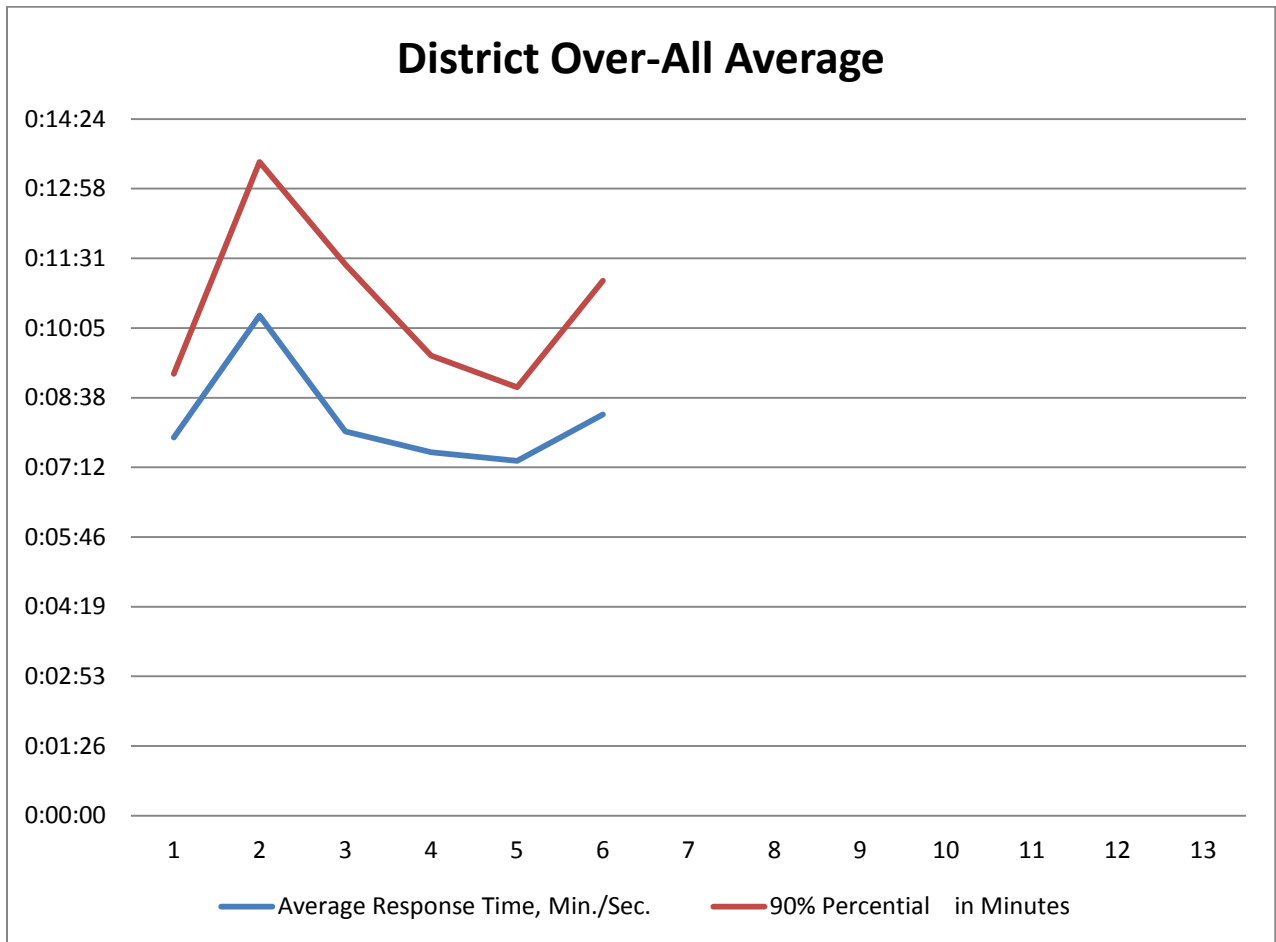
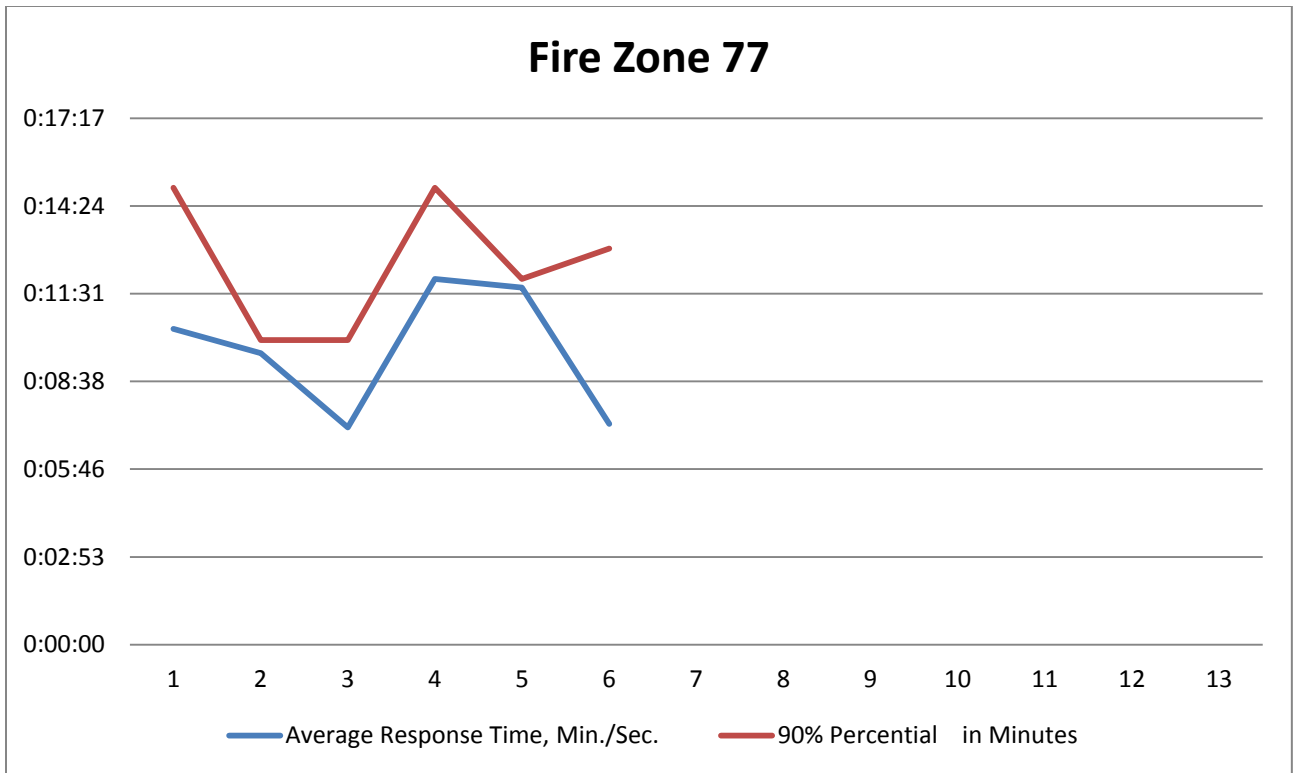


Station 75



Fire Zone 76





Significant Calls in June, 2014 *and the not so significant*

Motorcycle Accident: 06/26/2014 around 1750 hours Chief 701, Rescue 71 with 3 personnel responded to SR-97A and SR-97 for a motorcycle rider down. Upon arrival patient was laying in the middle of the road with about 50 bikers around him. Patient was treated and transported to LCCH by Medic 3152 with non-life threatening injuries.

Gas Spill: 06/26/2014, around 1750 hours Rescue 71 with 2 personnel responded to 302 E Woodin Ave, Union 76 Gas Station for a gas spill.

2 Alarm Brush Fire: 06/25/2014, around 1329 hours Chief 701, 703, Rescue 71, Brush 71, 73, Engine 72, 75, Tender 71 responded with 13 personnel to a brush at MP 238 SR-97. Fire was contained and extinguished around 1538 hours. Cause of the fire was people doing target practice with a 9mm gun.

Cooking Fire: 06/20/2014 around 1432 hours, Rescue 71 with 2 personnel responded to a report of a Residential Fire Alarm at 1655 Hawks Meadow Road. Upon arrival they found a cooking fire confined to the container, fire under control.

Cooking Fire: 06/17/2014 around 0834 hours, Engine 71 with 3 personnel responded to a report of a Commercial Fire Alarm at 2220 W Woodin Ave. Upon arrival they found a cooking fire confined to the container, fire now out.

Gas Spill / Sunken Boat: 06/16/2014 around 1211 hours 703, Rescue 71, Marine 71 responded to 619 W Manson Raod, City Marina, for gas spill on the water secondary to a sunken boat. The boat had been removed, CFR placed a floating boom around the fuel.

Motor Vehicle Accident: 06/10/2014, around 1727 hours, Chief 701 Rescue 71 with 3 personnel, responded to a report of a two vehicle accident with minor damage, two occupants of one vehicle were not injured, the single occupant (driver) of the second vehicle was treated and transported to LCCH by Medic 3171.

Motor Vehicle Accident: 06/10/2014, around 1316 hours, Chief 701, 703, Rescue 71 with 4 personnel, responded to a two vehicle collision, two patients signed medical releases and were left with CCSO.

2 Alarm Brush Fire: 06/09/2014, around 1828 hours Chief 701, Rescue 71, Tender 74 responded with 5 personnel to a 2nd alarm brush fire at 91 Weimer Road, Orondo, WA.

2 Alarm Brush Fire: 06/08/2014, around 2335 hours Chief 701, 703, Rescue 71, Brush 70, 73, 74, Engine 72, 73, 75 Tender 71, 74, 75 and four automatic aid units with 8 personnel responded to 855 Willmorth Dr. for a 2 alarm brush fire. Fire operations were wrapped up around 0444 hours the next day. Cause of the the fire is undertermined.

Gas Spill: 06/05/2014, around 1957 hours, Rescue 71 with 2 personnel responded to 407 E Woodin for a gas spill.

Motor Vehicle Accident: 06/04/2014, around 0706 hours, 710, Rescue 71 with 3 personnel, responded to 17 W Woodin Ave for a motor vehicle accident, single vehicle roll over. Driver signed medical release and was left with CCSO.

2nd Alarm Brush Fire, Mutual Aid with Mansfield: 06/03/2014 around 1903 hours, CFR was unable to field a response.

3rd Alarm Brush Fire, Mutual Aid with DCFPD 2: 06/03/2014 around 1749 hours, Brush 71, and Engine 71 with seven personnel responded to 113 N. Mary Road, East Wenatchee to provide structural protection during a wildland fire.

2nd Alarm Brush Fire, Mutual Aid with Mansfield: 06/03/2014, around 1254 hours, CFR was unable to field a response.

Garage/Shop Fire: 06/03/2014 around 1253 hours Brush 73, Engine 71, 72, 73, 75, Tender 71, 74, 75, Support 71 with a total of 21 personnel responded to 12245 South Lakeshore Road for a Garage/shop fire. Crews were able to quickly extinguish an interior fire and limit the damage to its contents. Cause of the fire was sparks from grinding metal after welding.

Public Service Announcements:

June 2014 PSA

- Facts on Snakes
- Lightning Safety

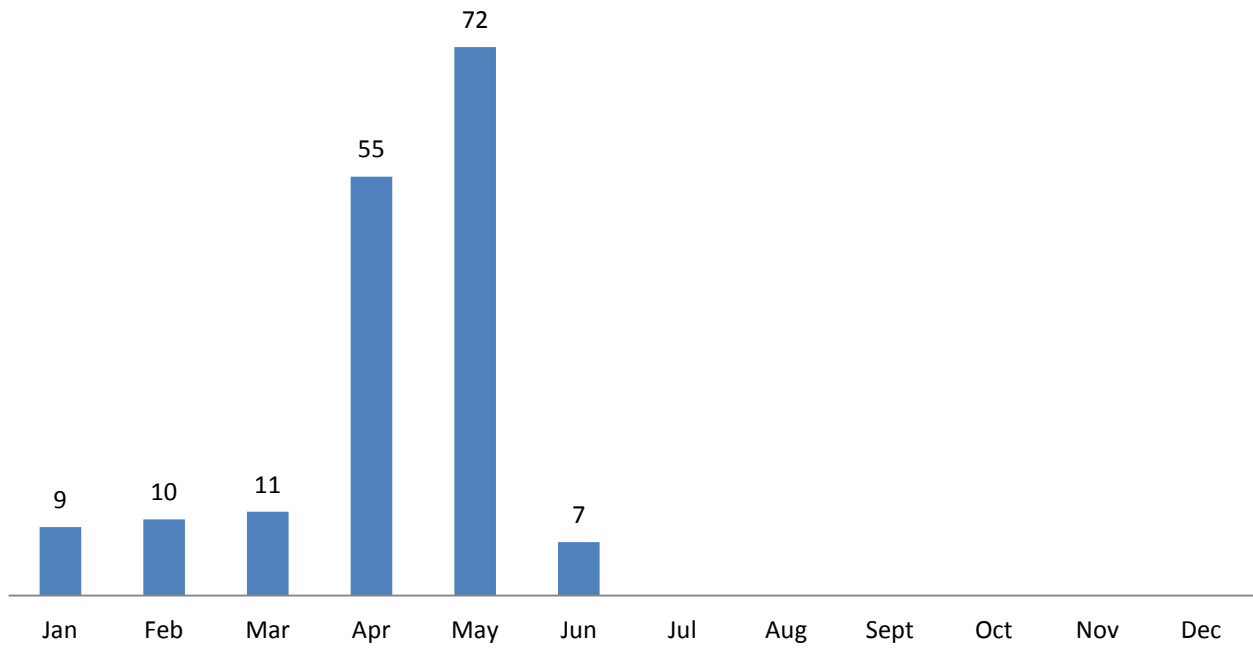
May 2014 PSA:

- Safer in 7 – Kids Safety
- Boating Safety Tips
- Grilling Safety

April 2014 PSA:

- Clothes Dryer Safety Tips
- Wildland Fire Safety
- Parents Tips: Young Firesetters
- *Fall Prevention Story Board*

2014 Fire and Life Safety Surveys



Smoke Detector Home Safety Program

