



# **CHELAN**

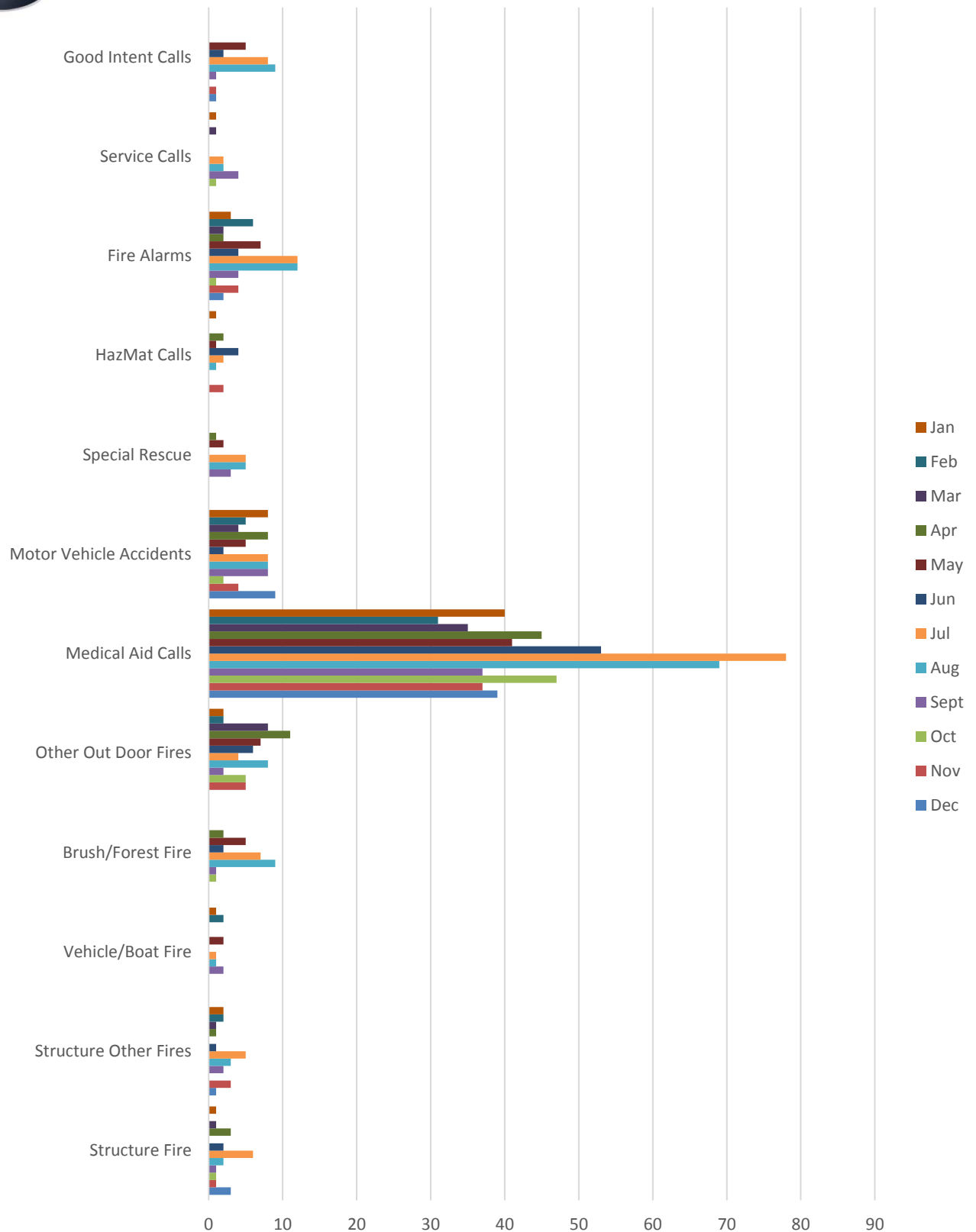
## **FIRE AND RESCUE**



### **2016 Year End Emergency Response Report**

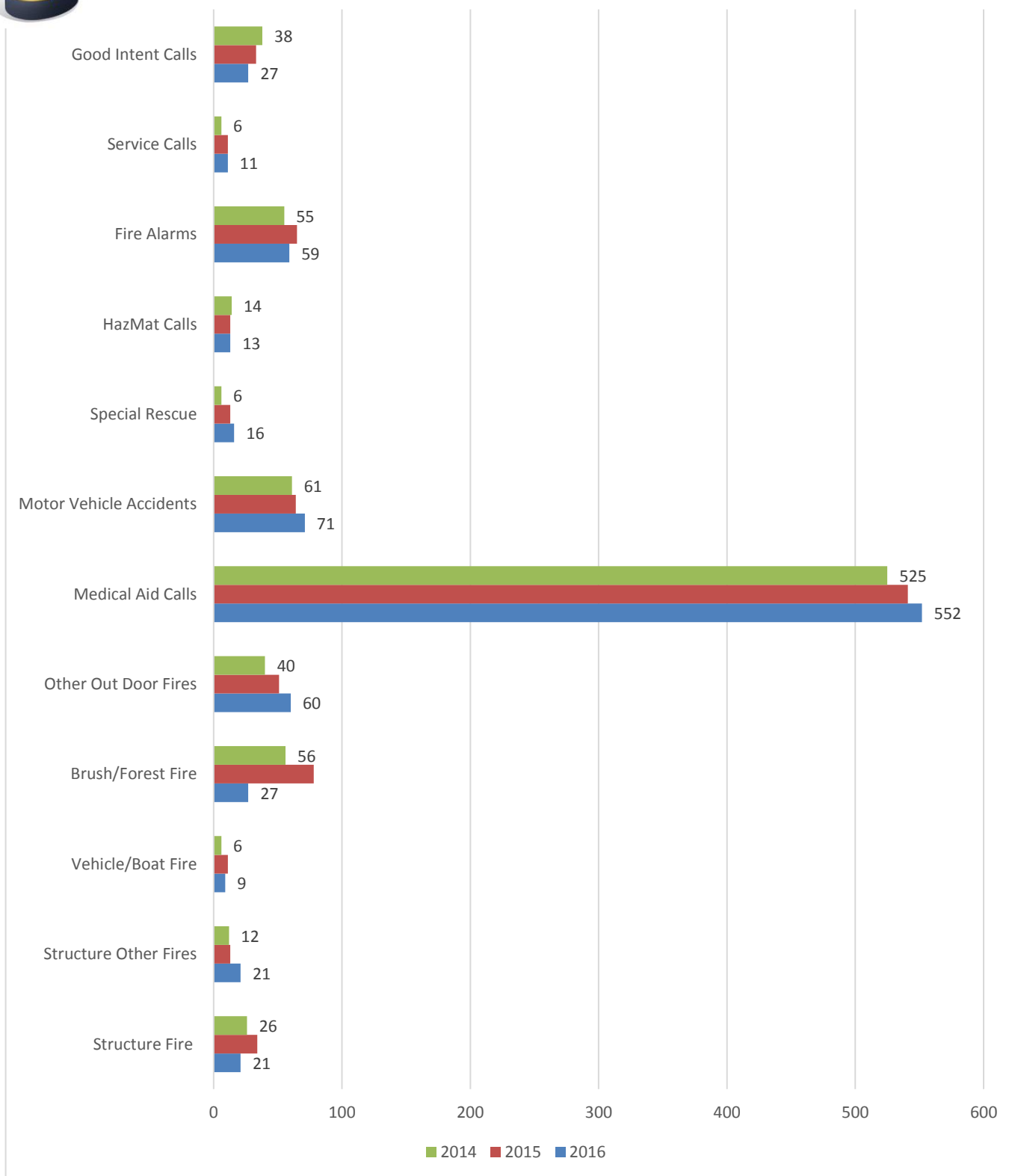


## Incident Type by Month 2016



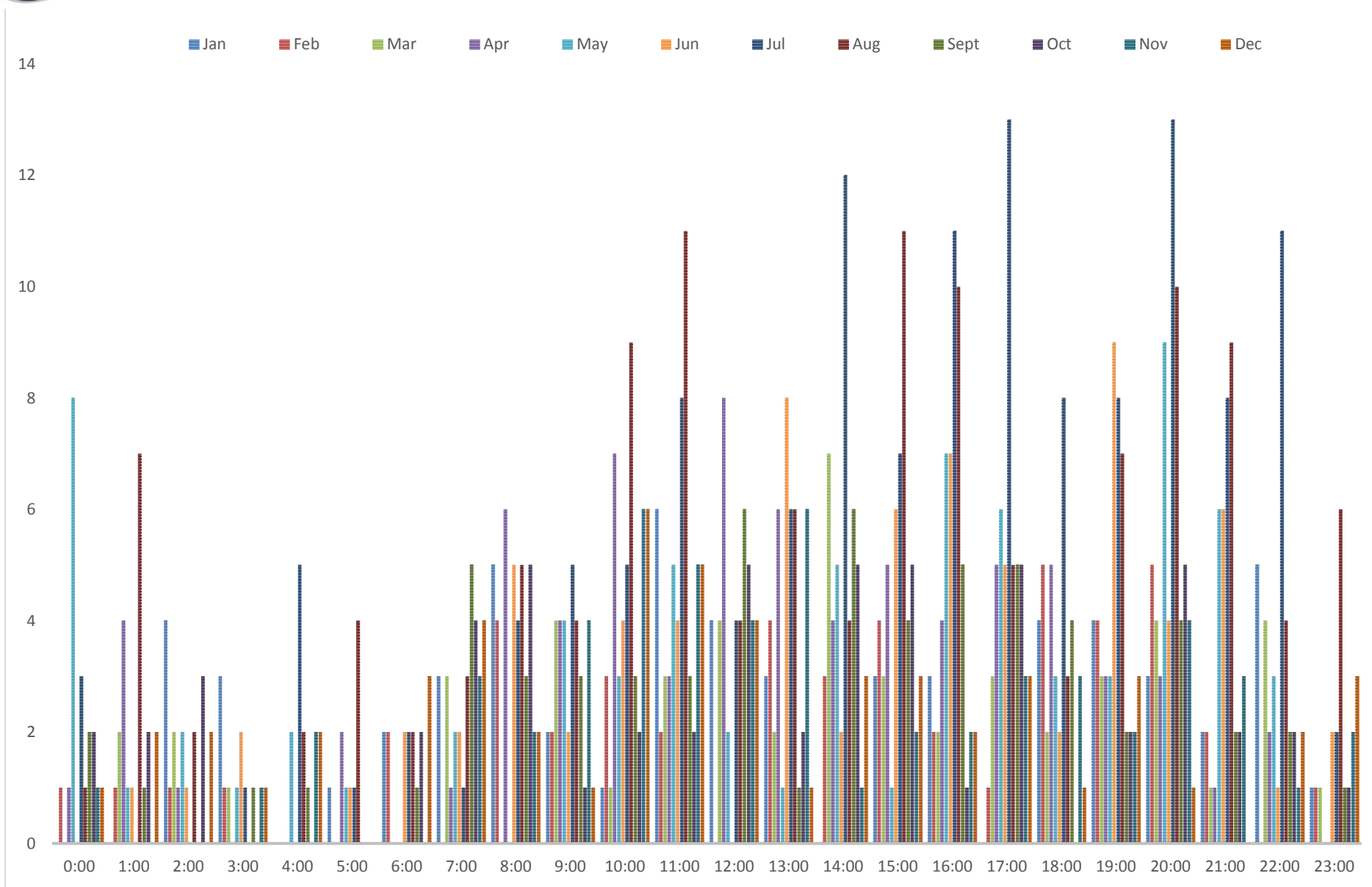


## Incident Type by Year





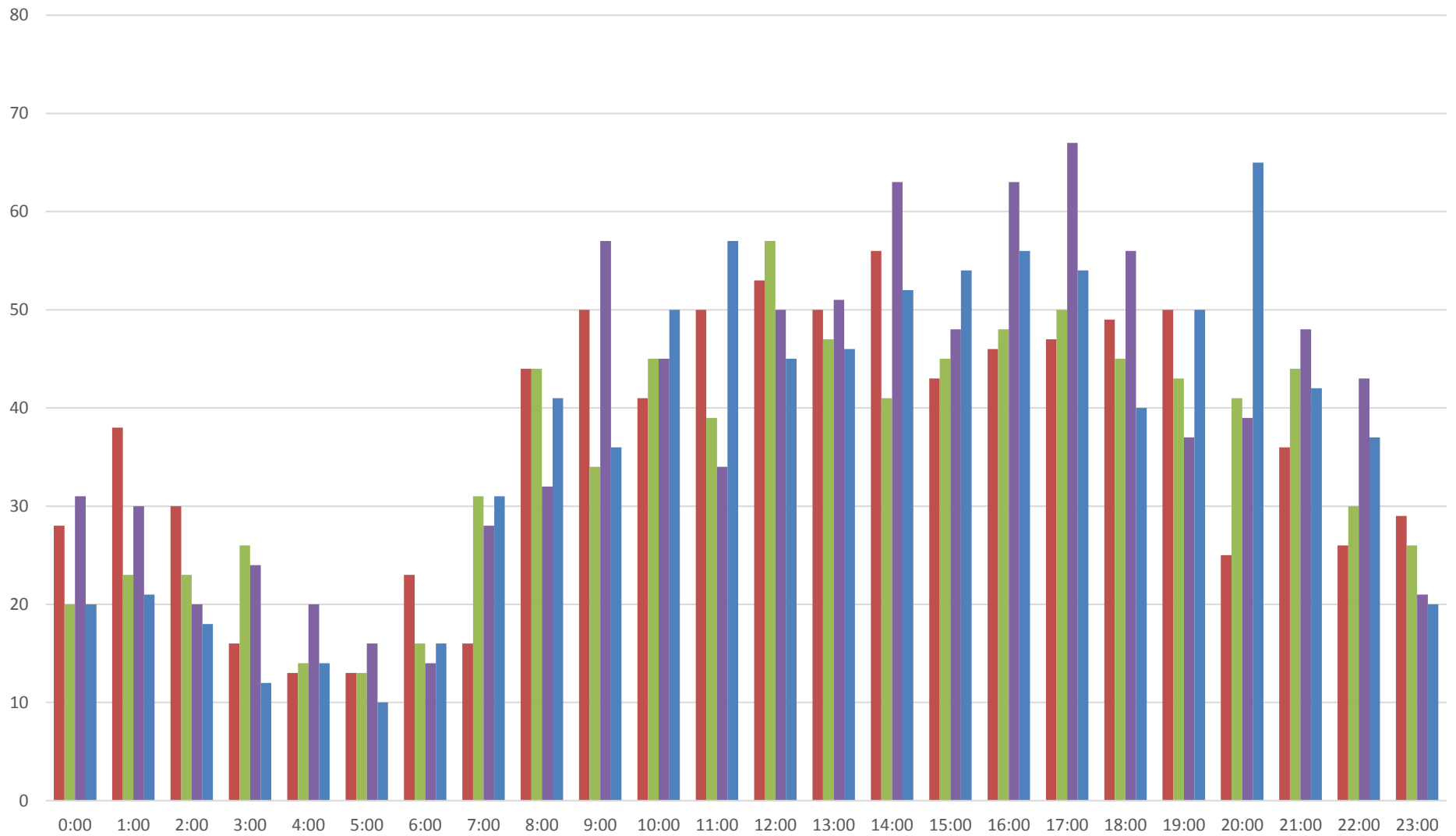
## CALLS BY TIME OF DAY AND MONTH





## Incident by Time of Day and Year

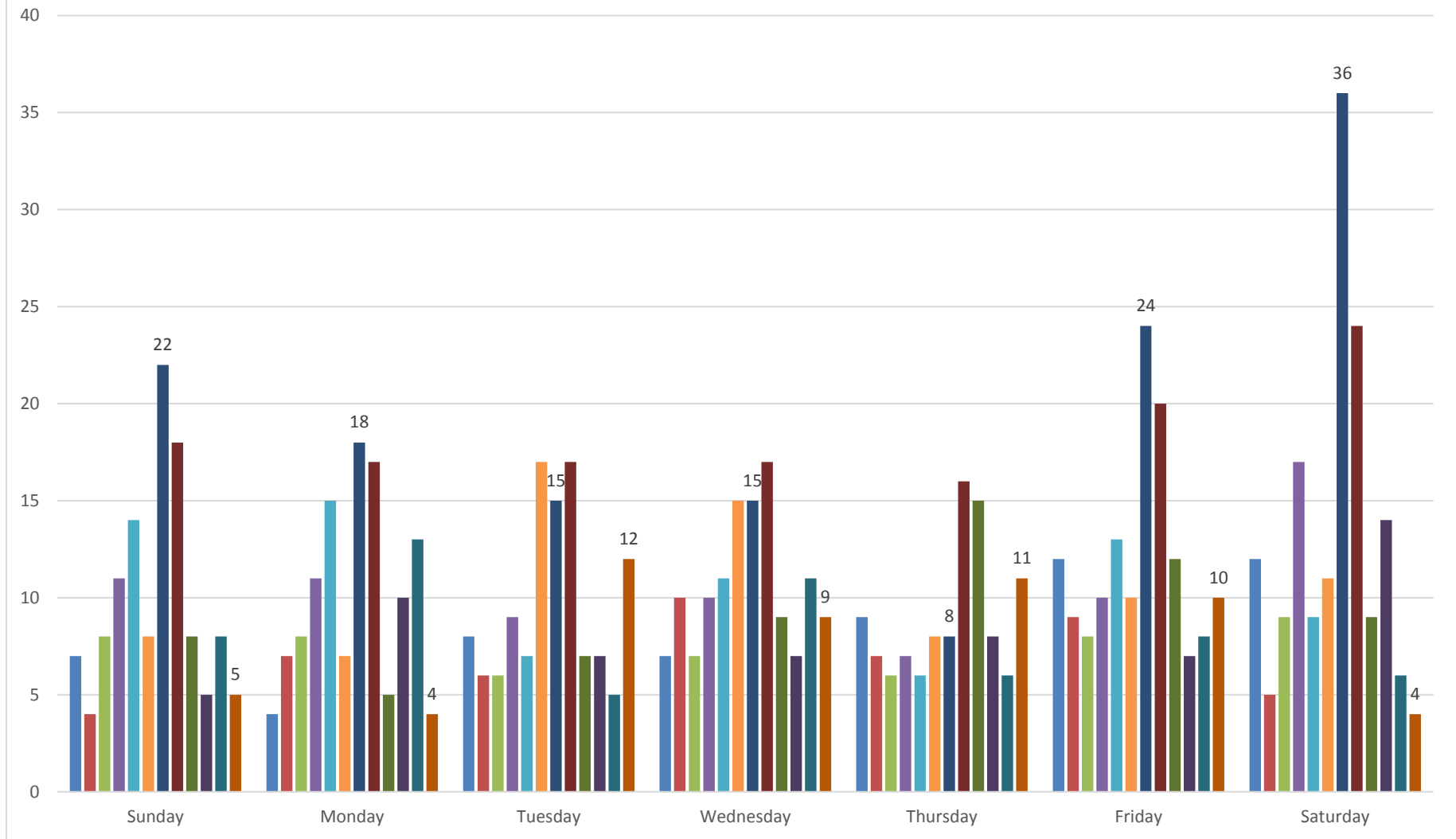
■ 2013 ■ 2014 ■ 2015 ■ 2016





## Incident by Day of the Week and Month

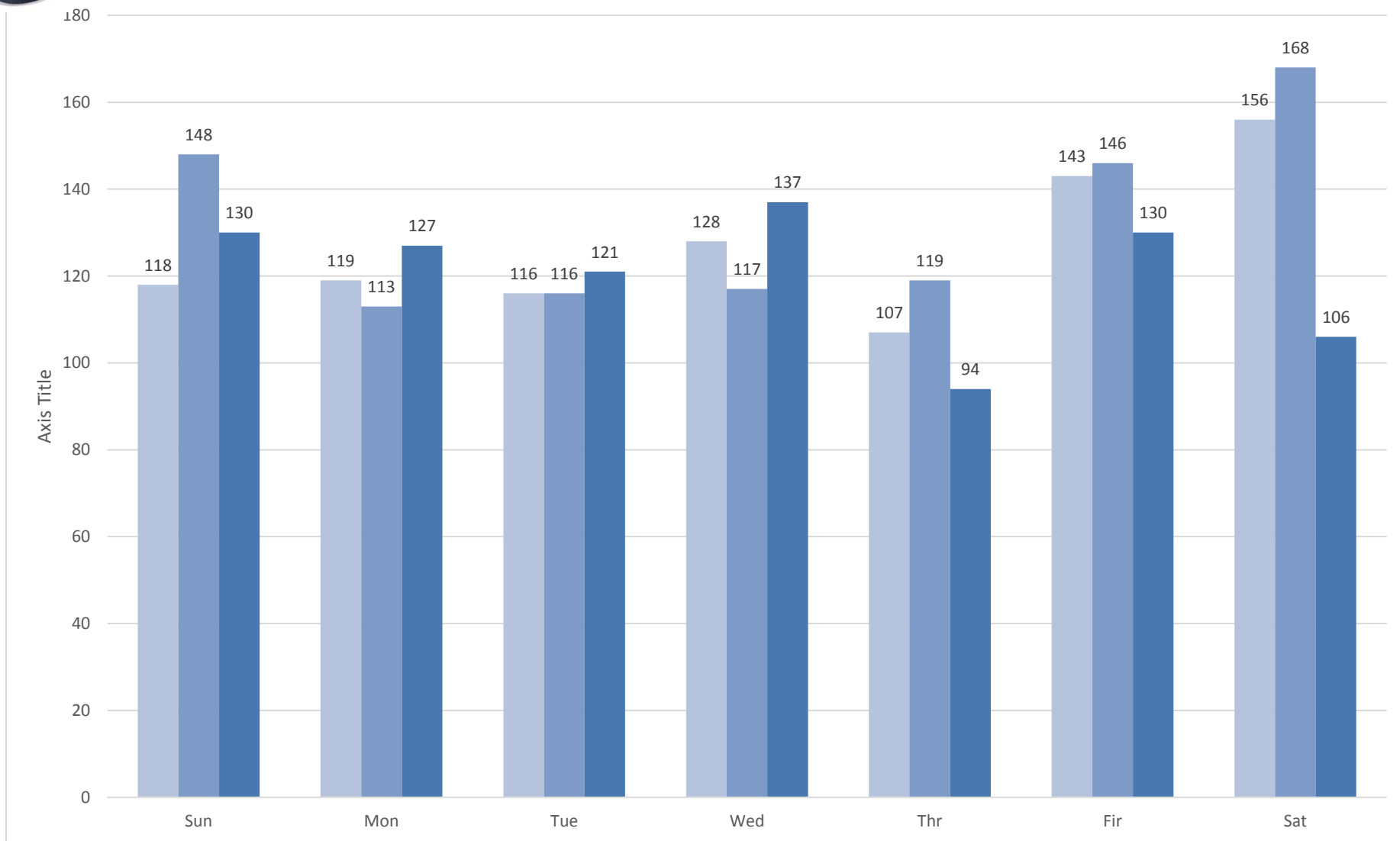
Jan Feb Mar Apr May Jun July Aug Sept Oct Nov Dec





## Incident by Day of the Week and Year

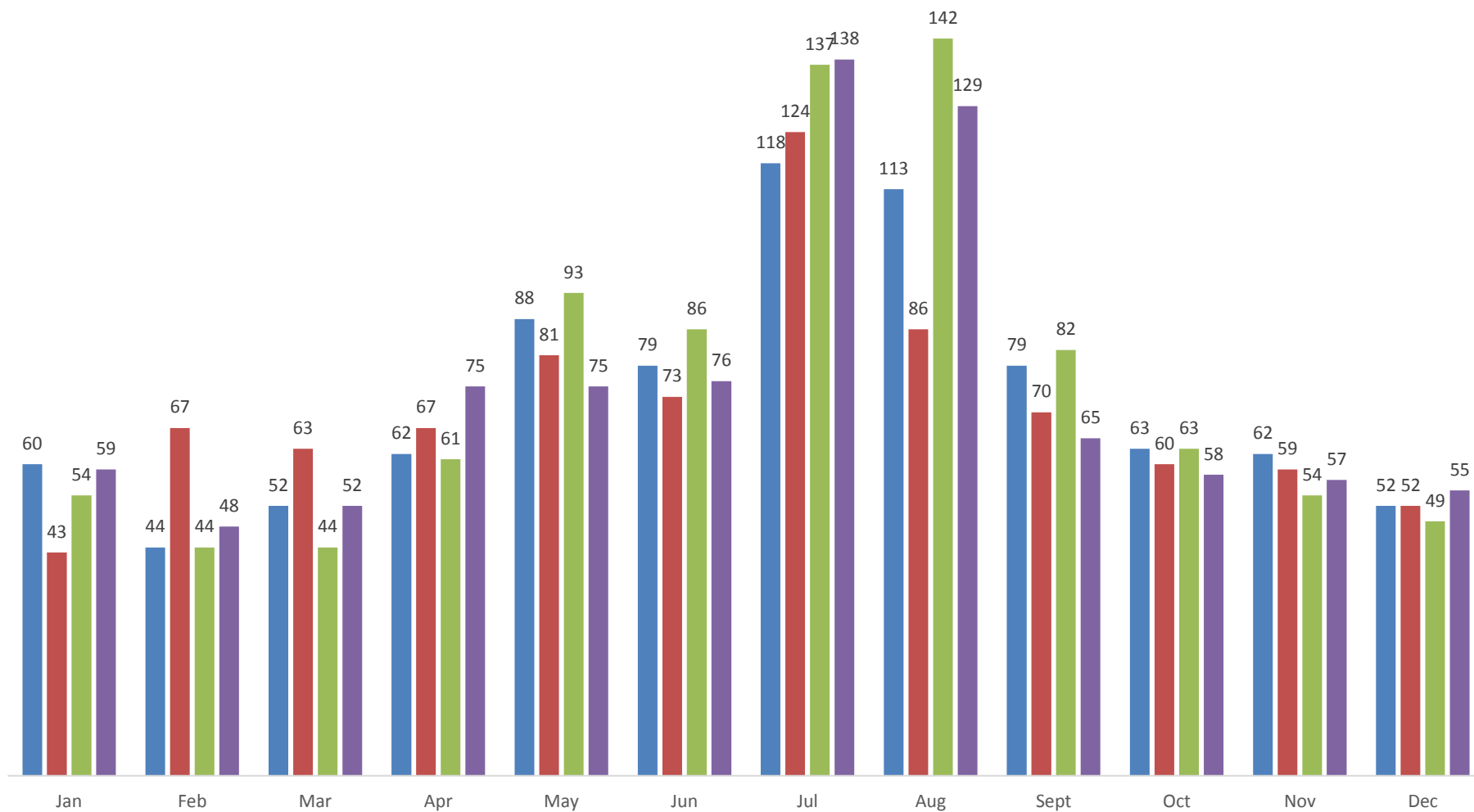
2016 2015 2014





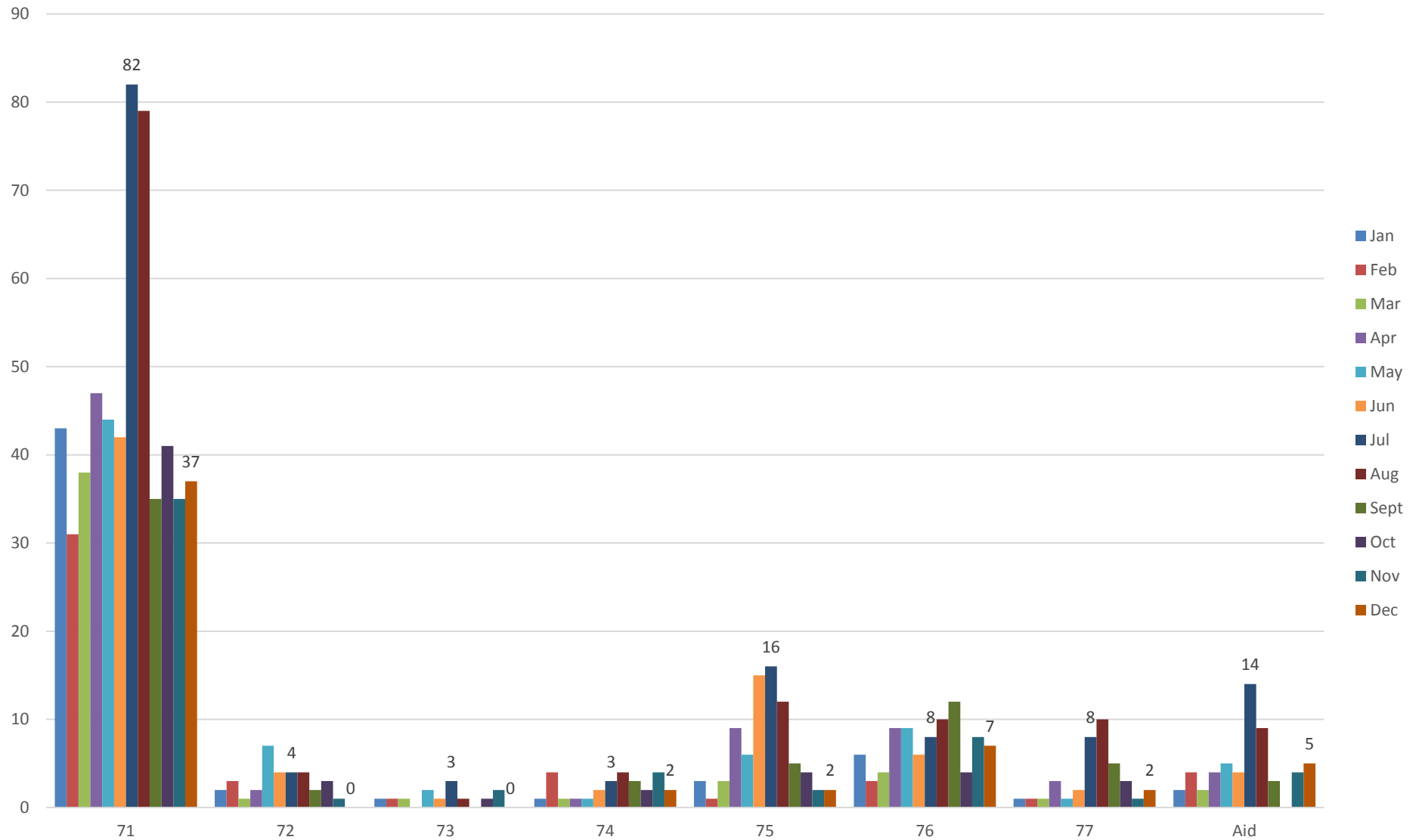
## Total Incidents Per Month

■ 2013 ■ 2014 ■ 2015 ■ 2016



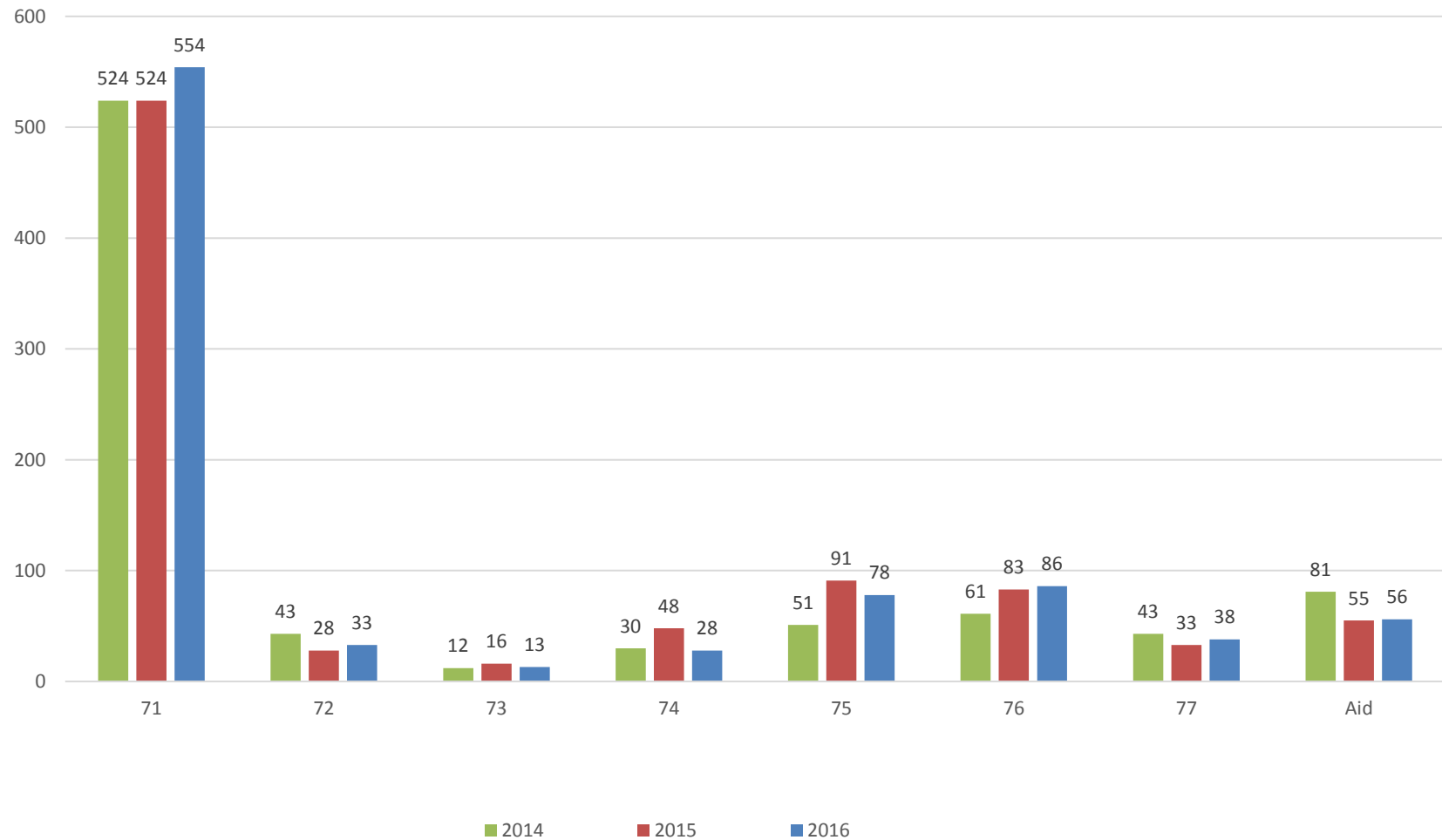


## Incident by First Due Area 2016



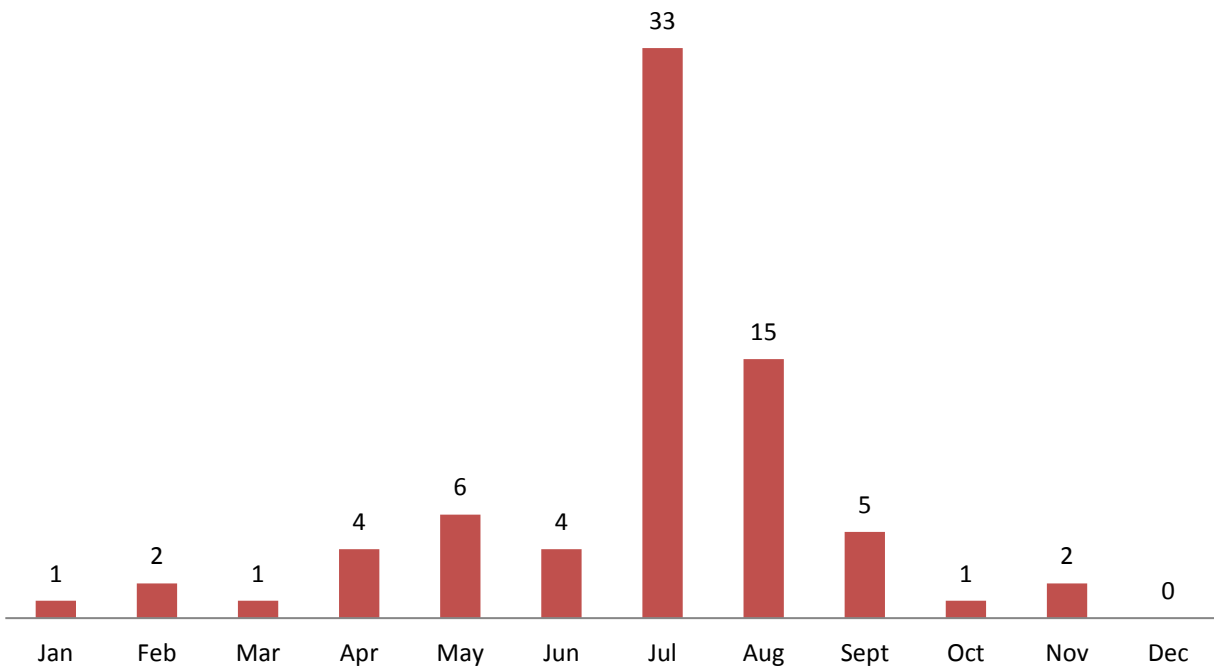


## Incidents By First Due Area

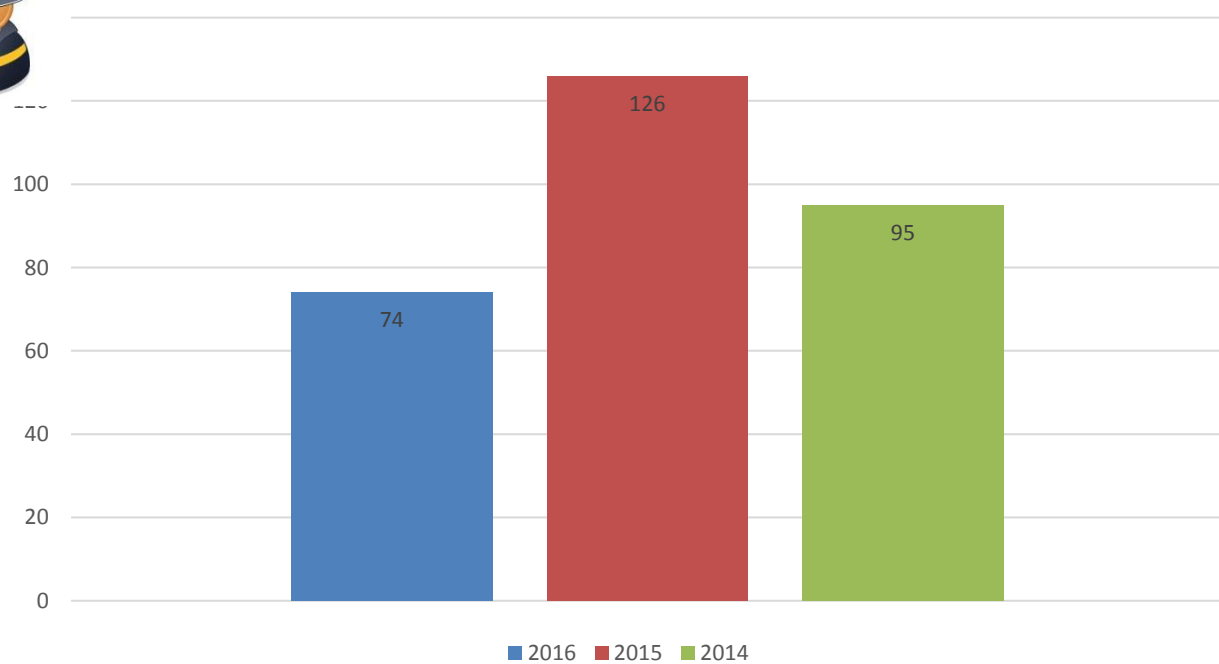




## 2016 Overlapping Incidents

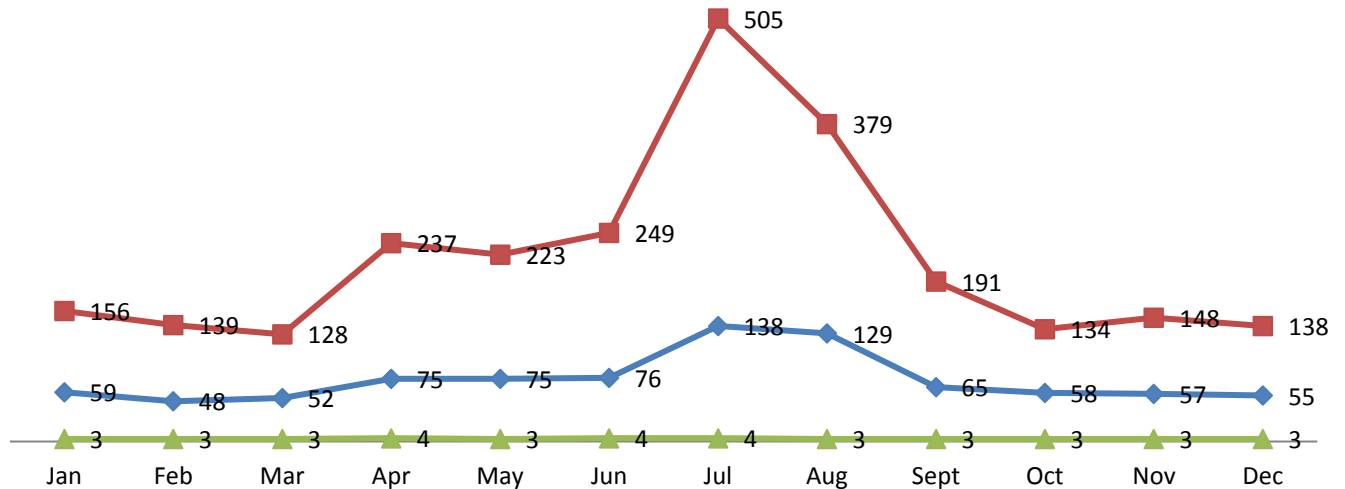


## Overlapping Incidents by Year



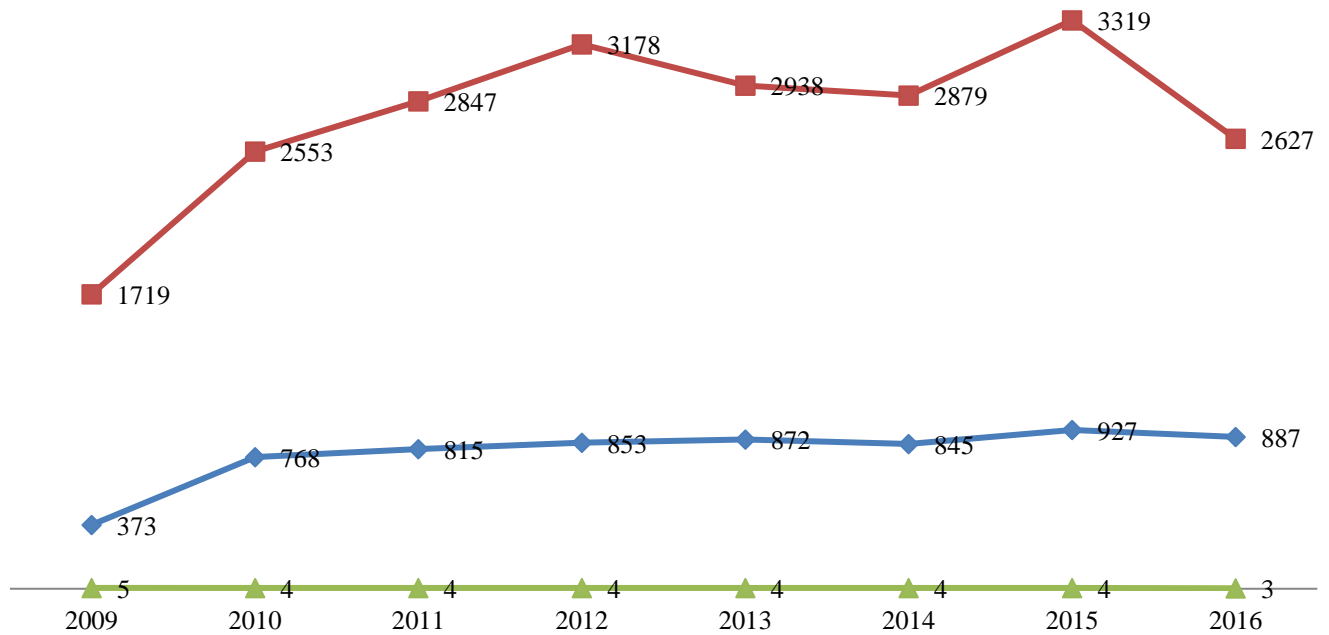
## Average Turnout Per Incident 2016

◆ Number of Incidents    ■ Total responders    ▲ Average Per Incident



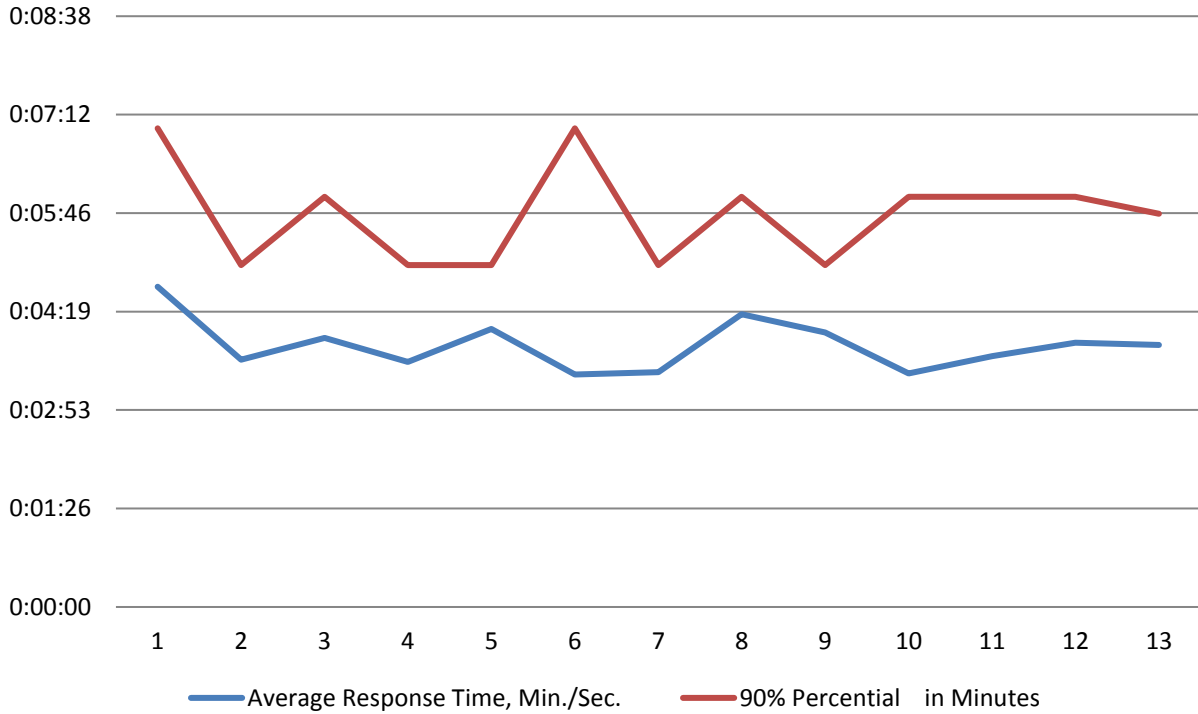
## All Emergency Response by Year

◆ Number of Incidents    ■ Total responders    ▲ Average Per Incident

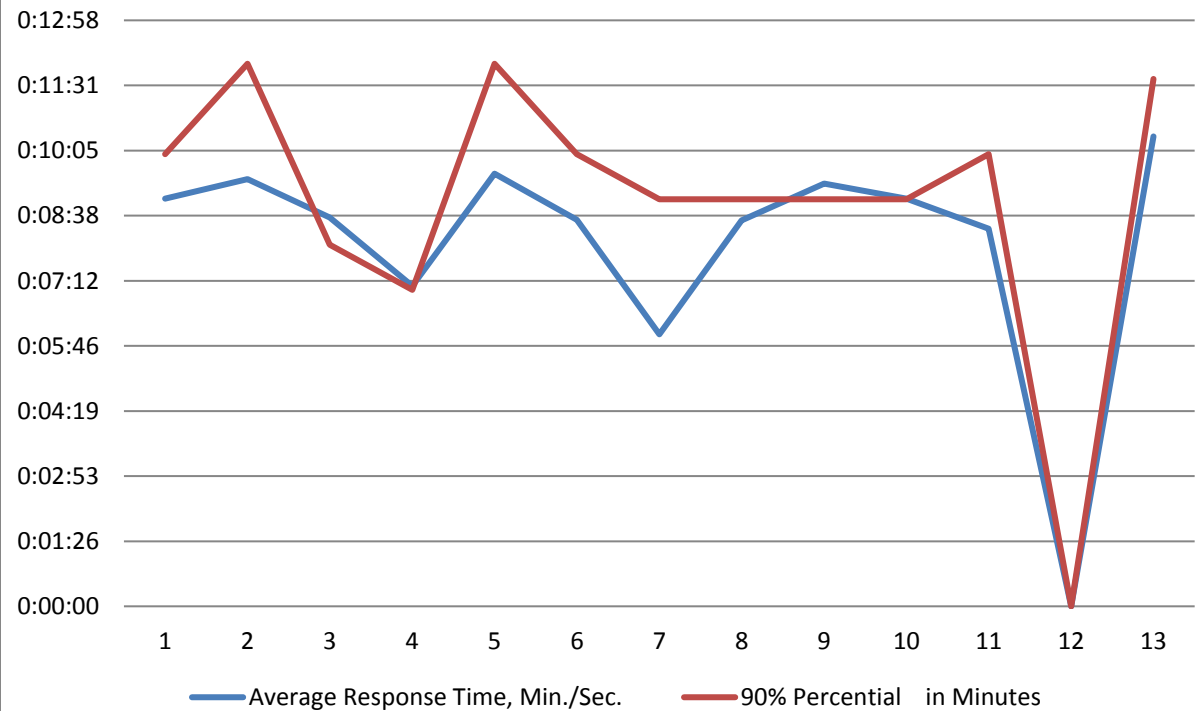




## Station 71

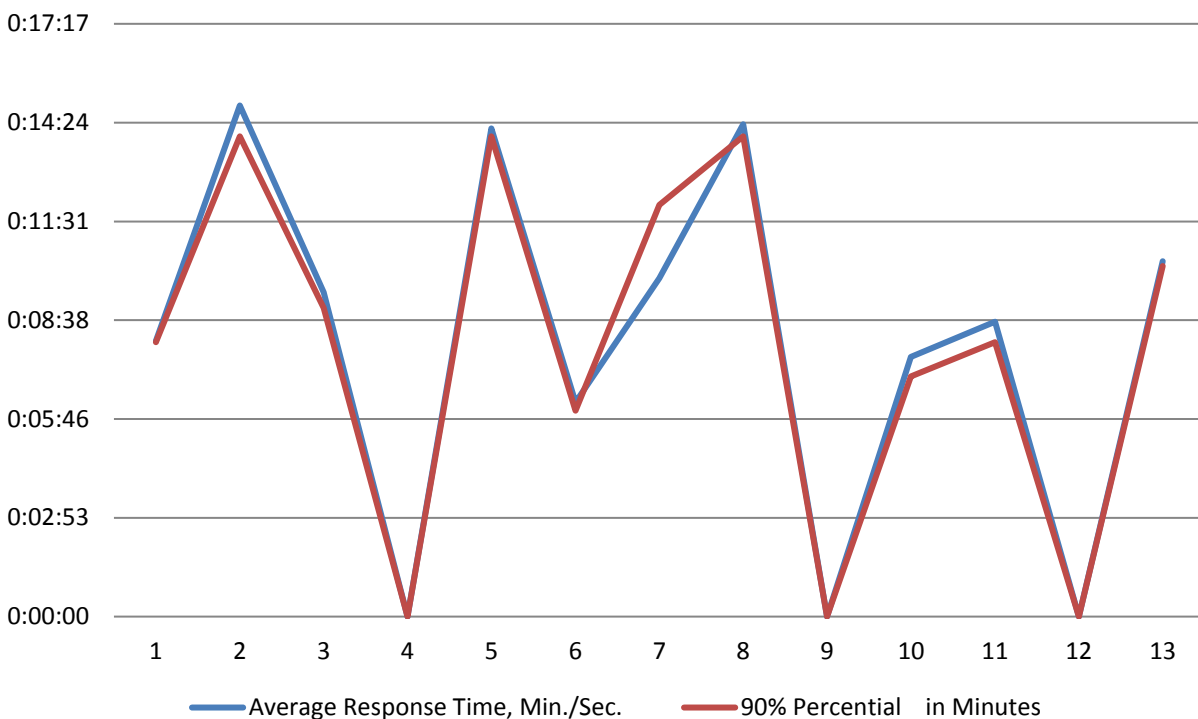


## Station 72

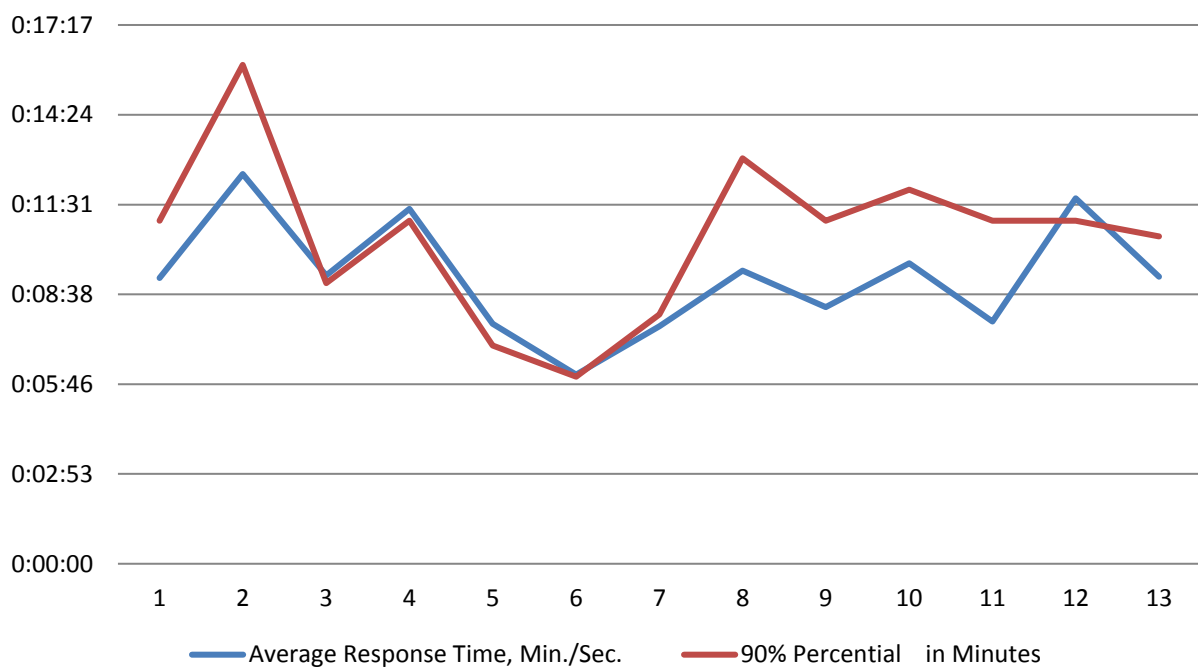




## Station 73

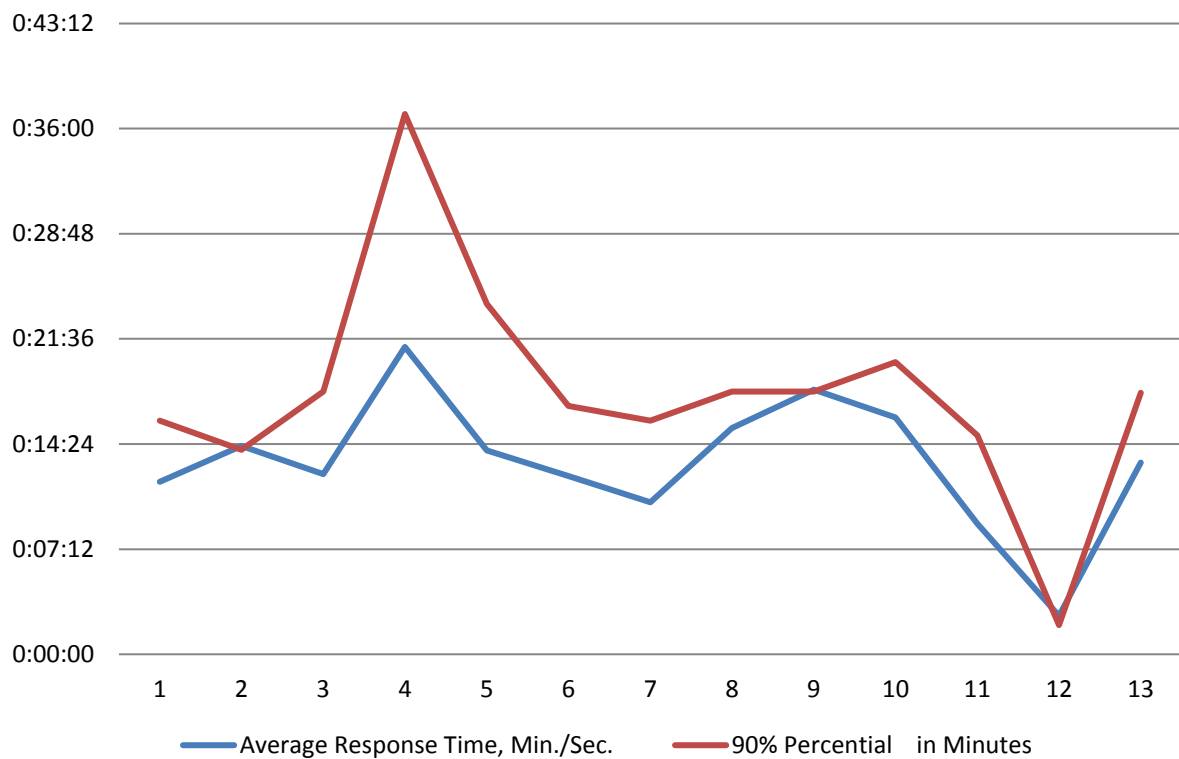


## Station 74

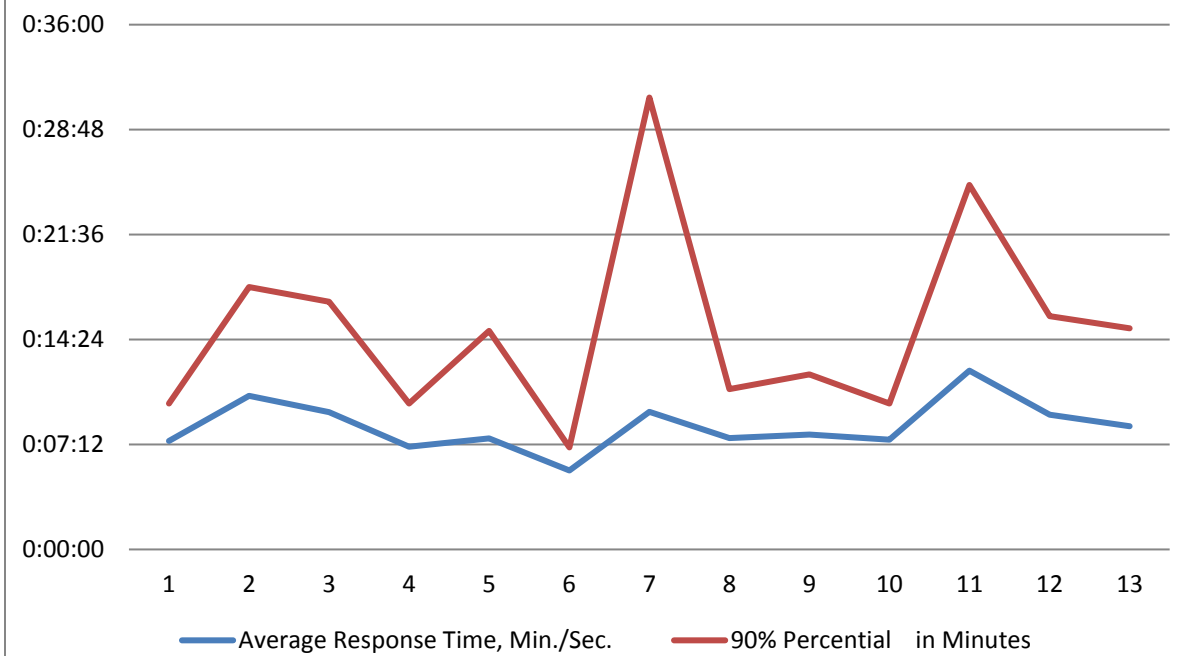


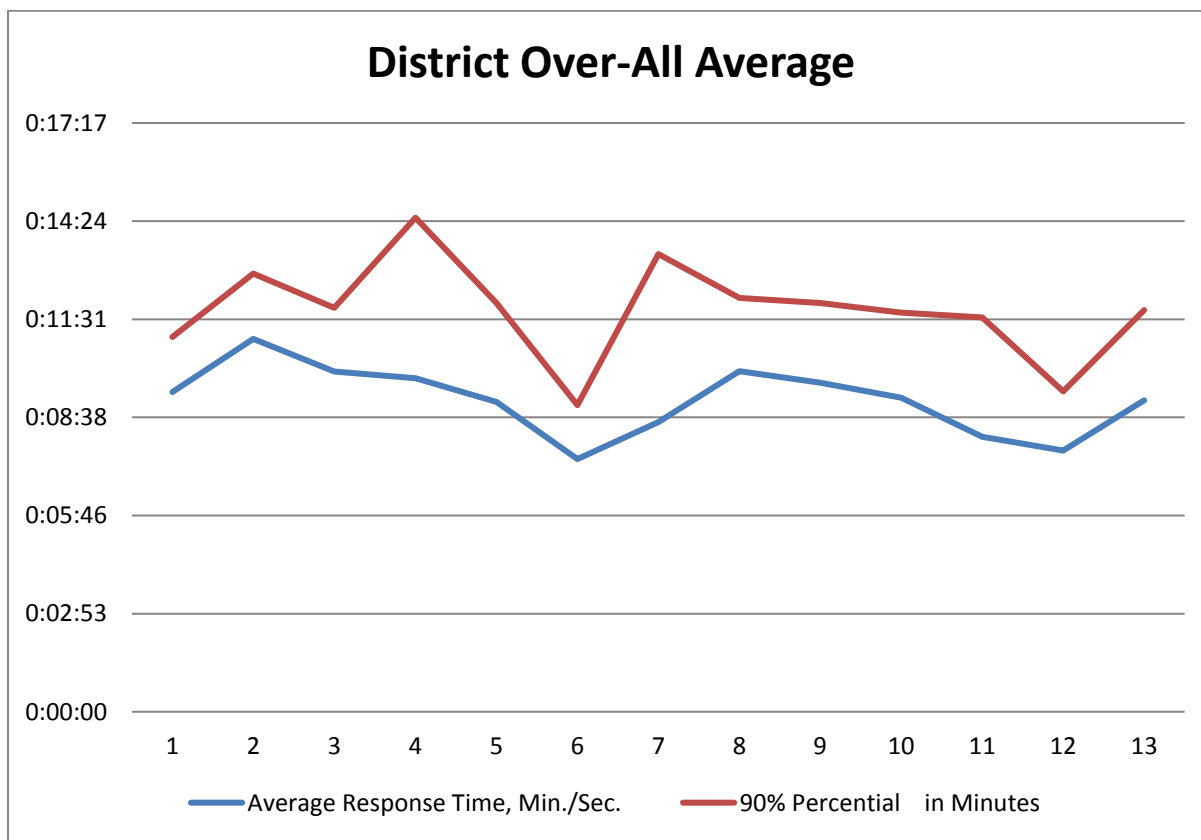
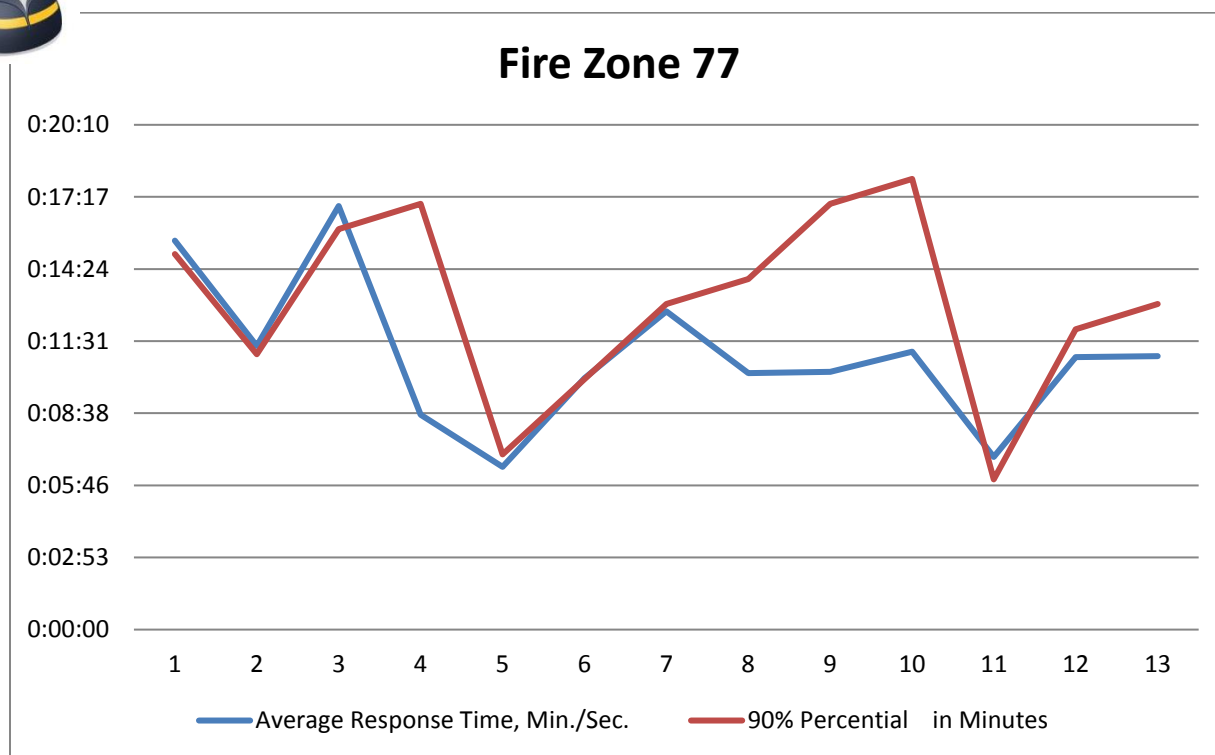


## Station 75



## Fire Zone 76

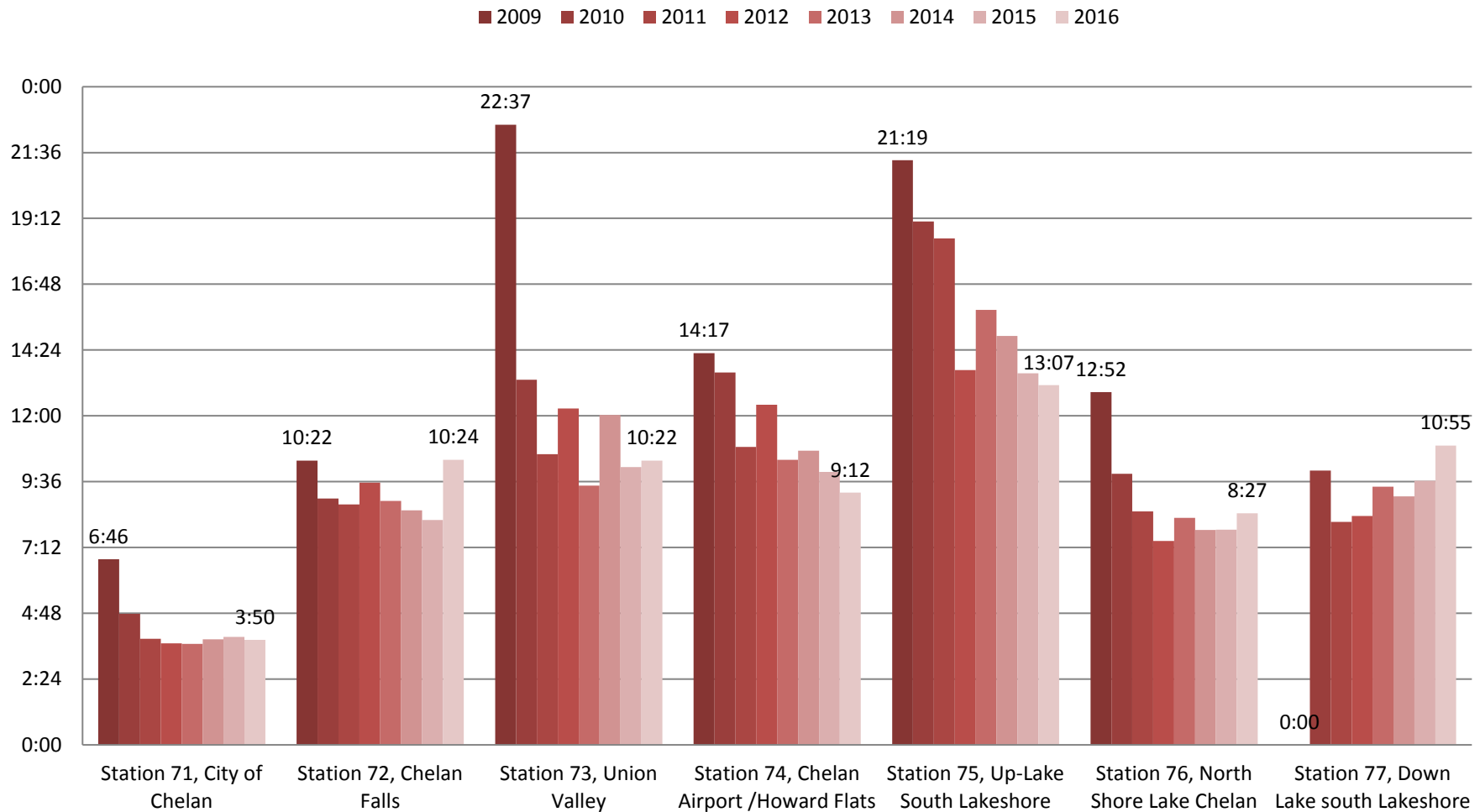








## Average Emergency Response Times In First Due Areas





## Public Service Announcements:

### January:

- None

### February:

- Safe kids Top Fire Safe Tips for winter

### March:

- Wildland Fire Safety
- Spring Safety Tips

### April:

- Protect Your Home – Wildfire & Risk
- Escape Planning
- “Are you Ready” for kids

### May:

- Safer in 7
- Boating Safety

### June:

- Heat Stroke
- Hot Summer Days safety information
- Facts - Snakes

### July:

- Portable Swimming Pool Safety

### August:

- Driveway Safety Tips
- Back Pack Safety Tips
- Back to School Safety Tips

### September:

- Back to School Safety Tips for Motorists
- Bicycle Riding Safety

### October:

- Emergency Preparation Tips
- Fire Extinguisher Information
- Safety Tips for Fall
- Halloween Safety Tips

### November:

- Smoke Detectors
- Change Your Batteries

### December:

- Christmas Tree & Fire Safety
- Cold Weather Hazards
- Roadside Emergency Kit

## Fire and Life Safety Surveys

