



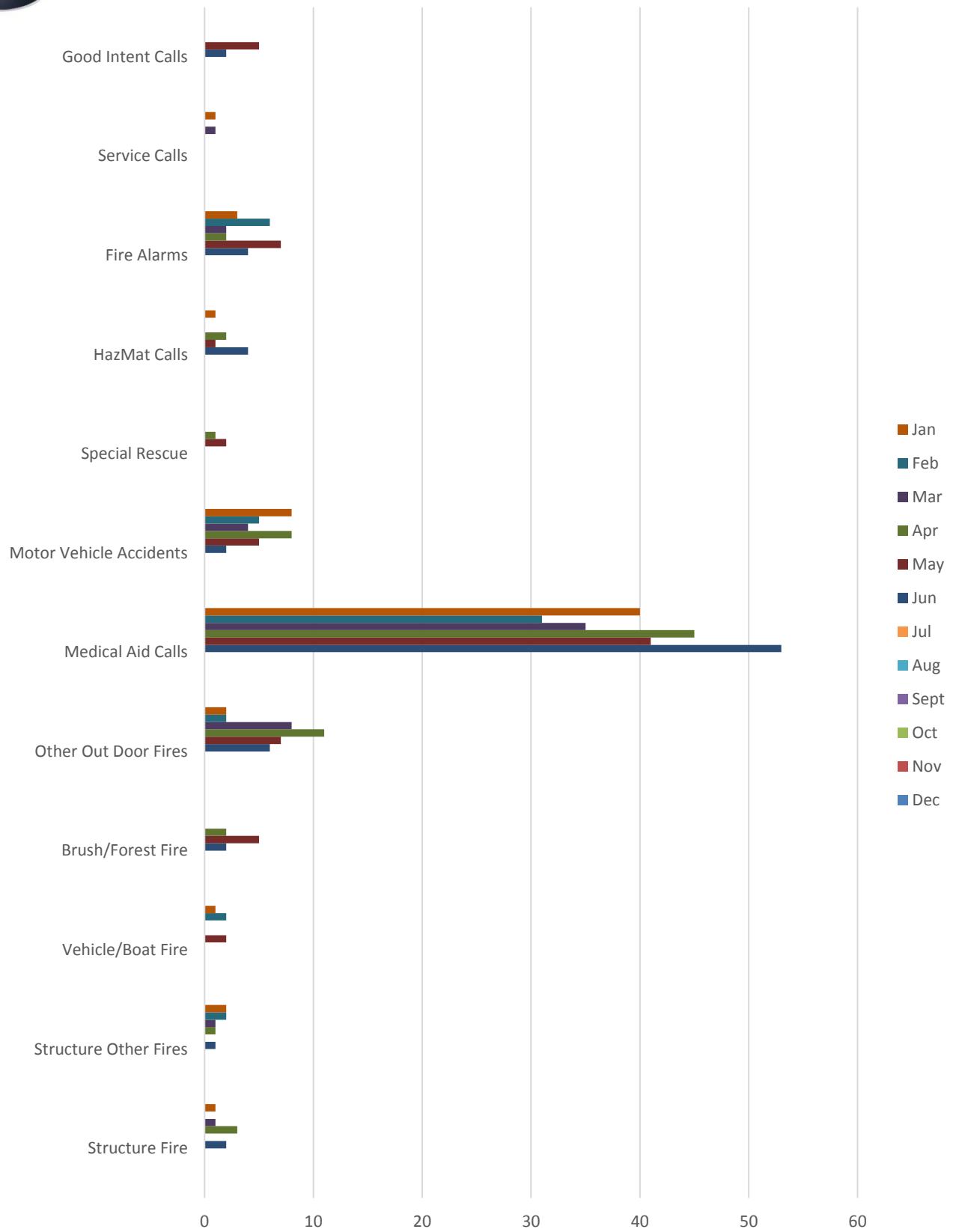
CHELAN FIRE AND RESCUE



2016 2nd Quarter (January - June) Emergency Response Report



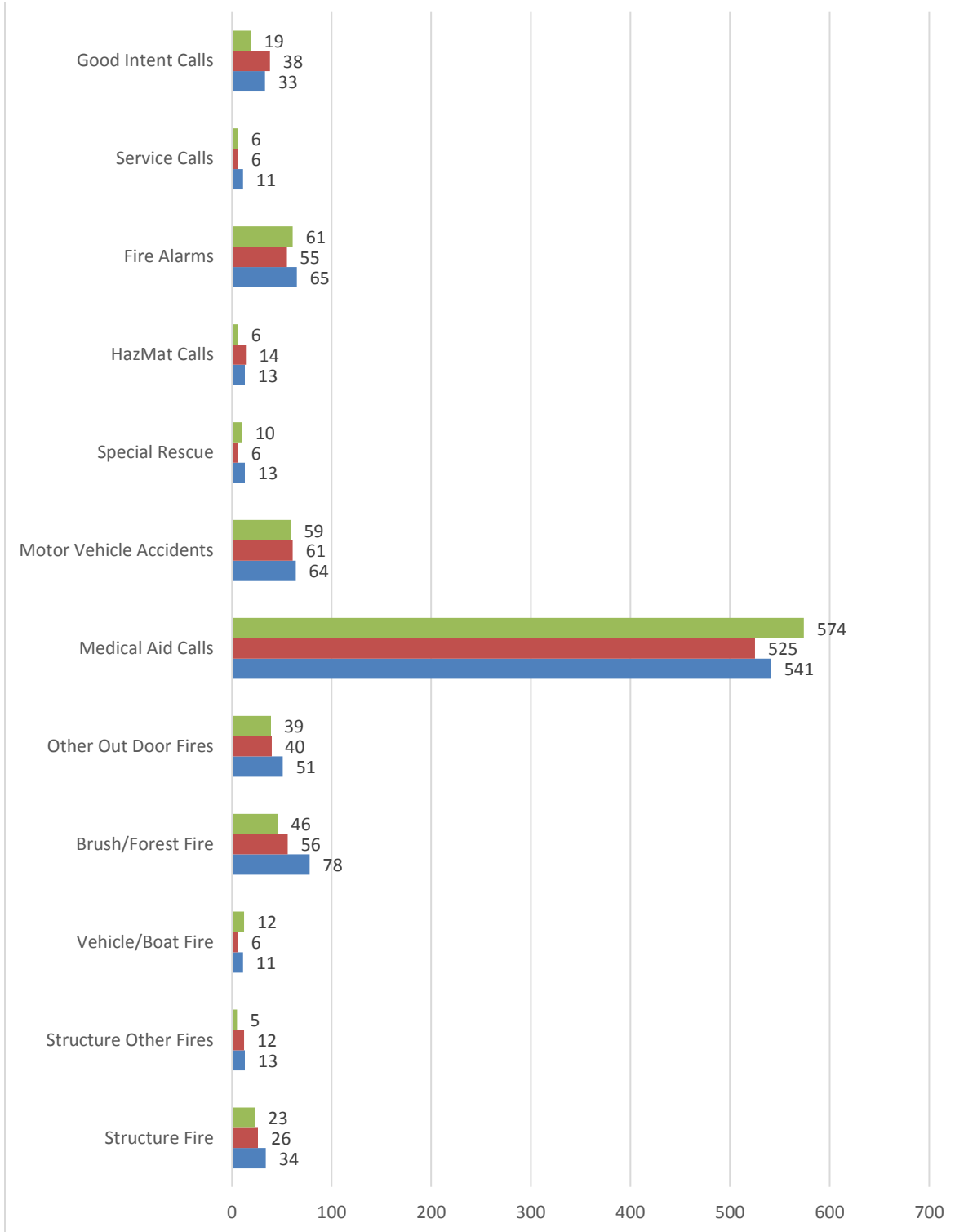
Incident Type by Month 2016





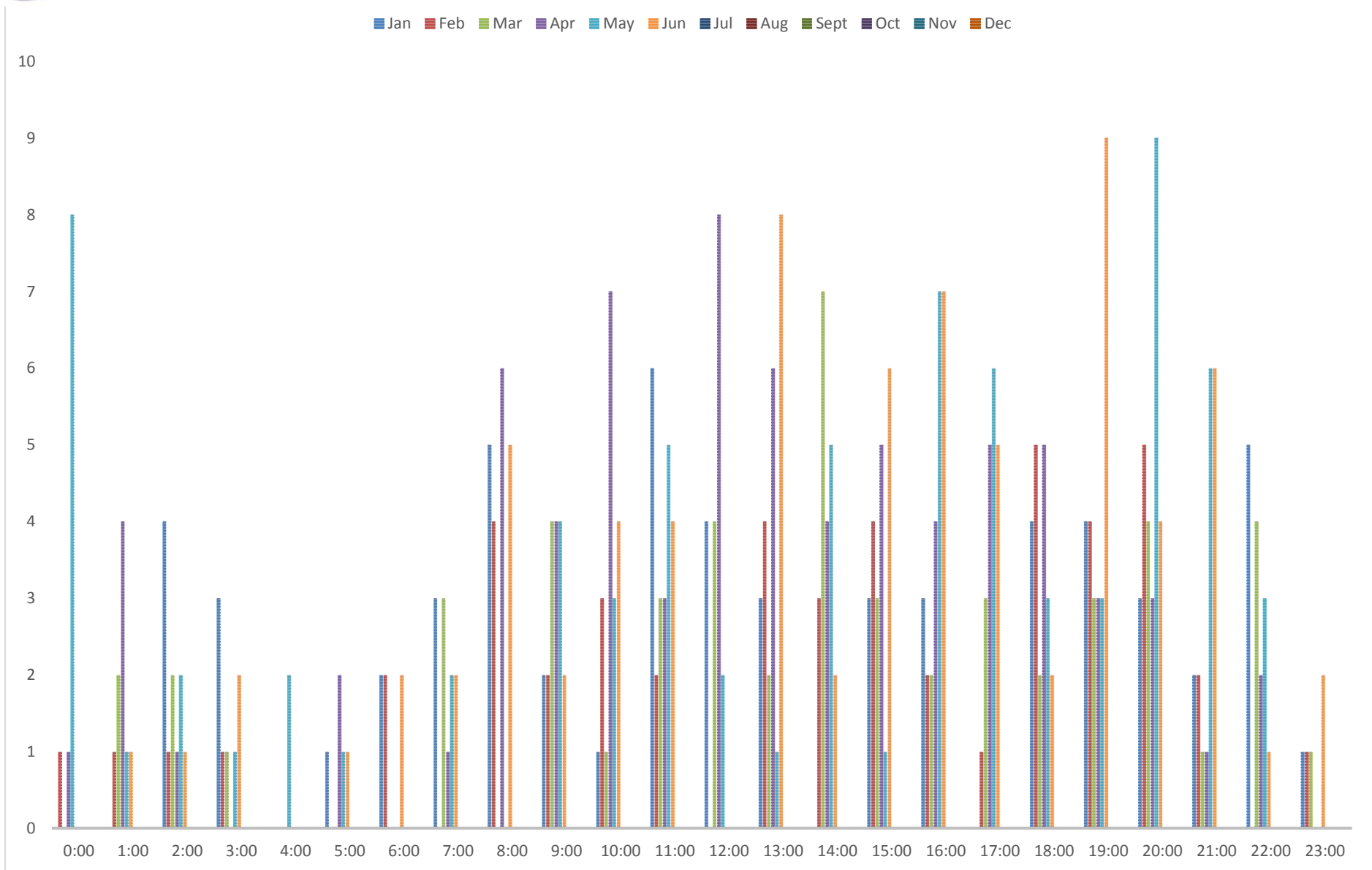
Incident Type by Year

■ 2013 ■ 2014 ■ 2015





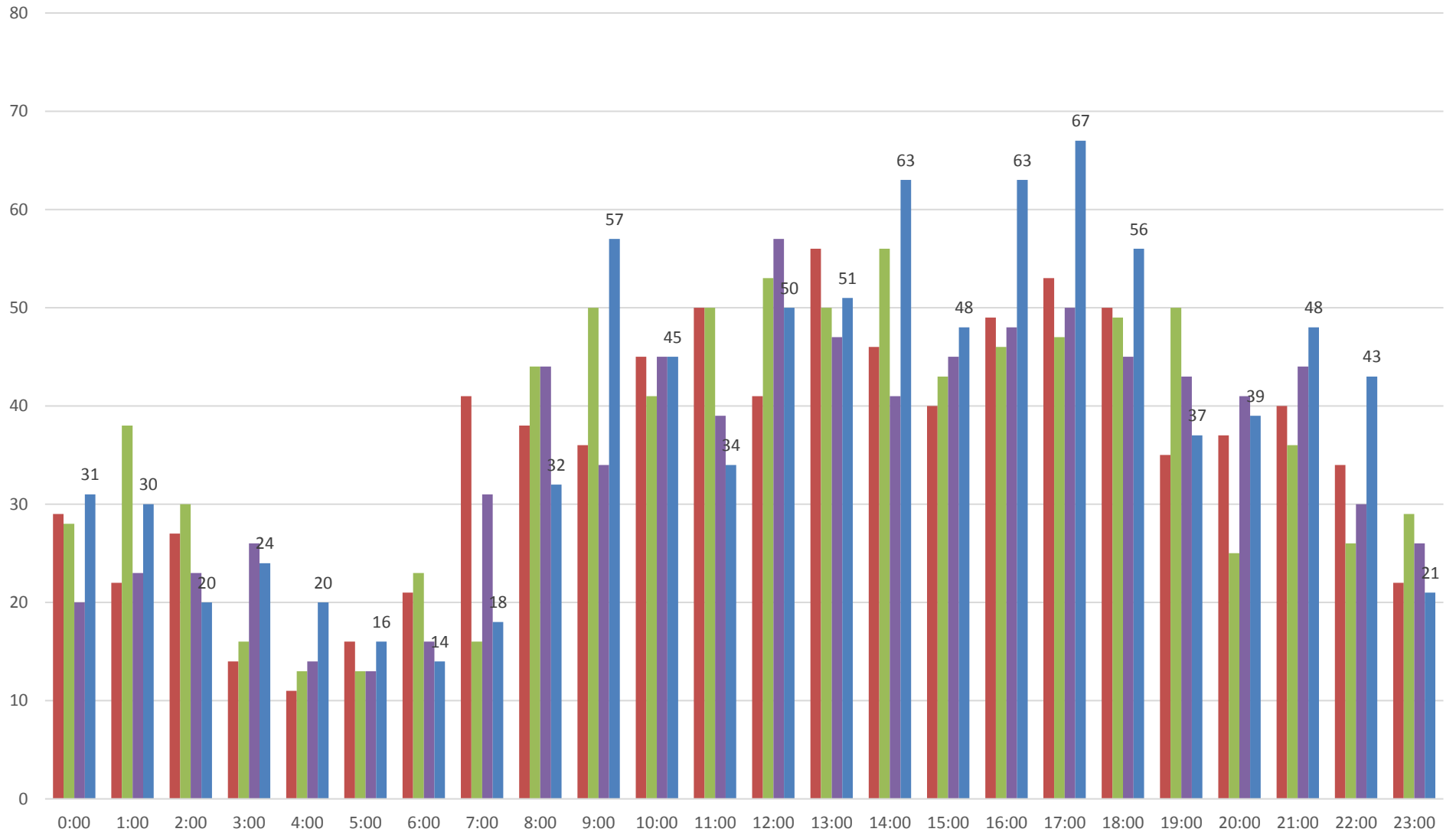
CALLS BY TIME OF DAY AND MONTH





Incident by Time of Day and Year

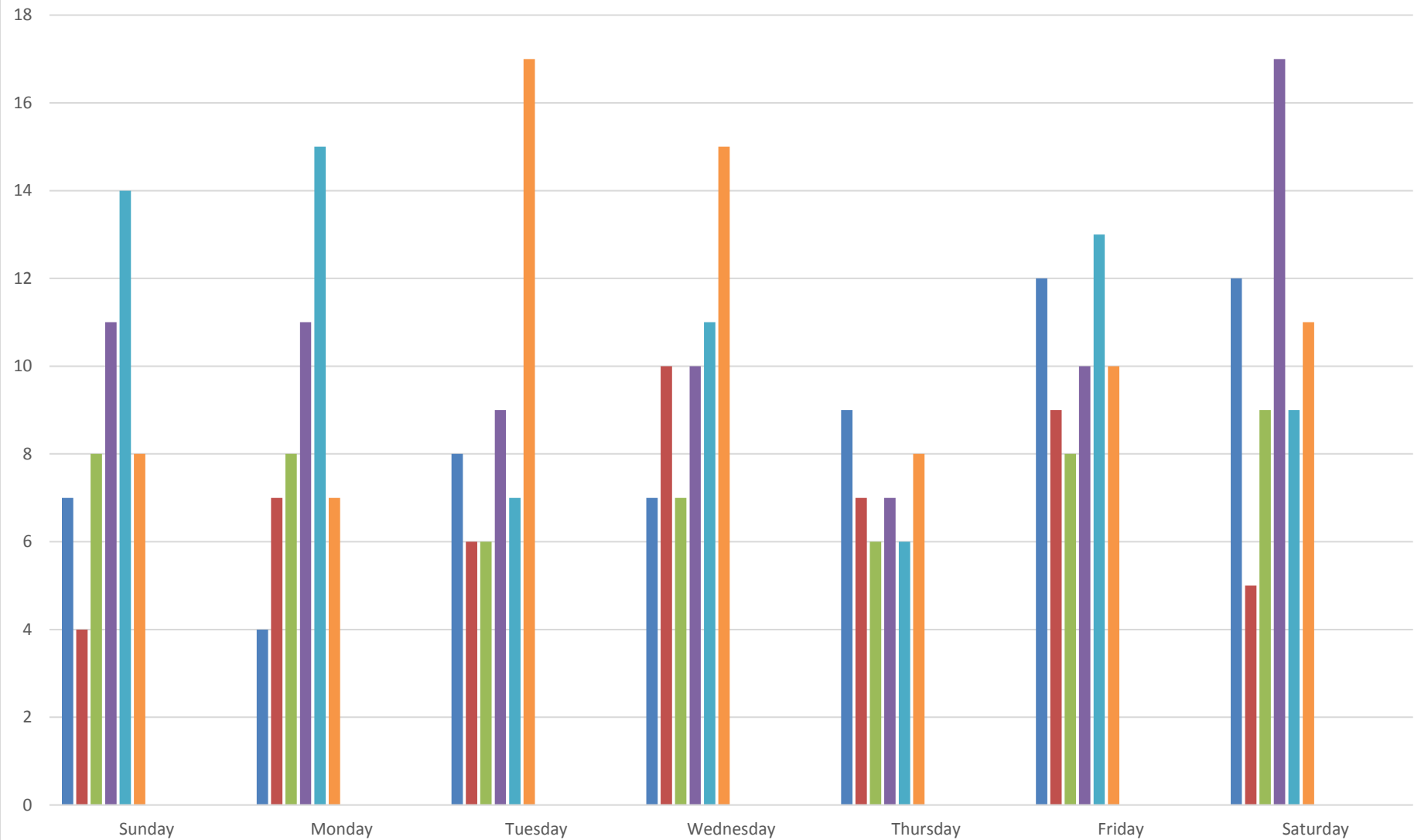
2012 2013 2014 2015





Incident by Day of the Week and Month

Jan Feb Mar Apr May Jun July Aug Sept Oct Nov Dec





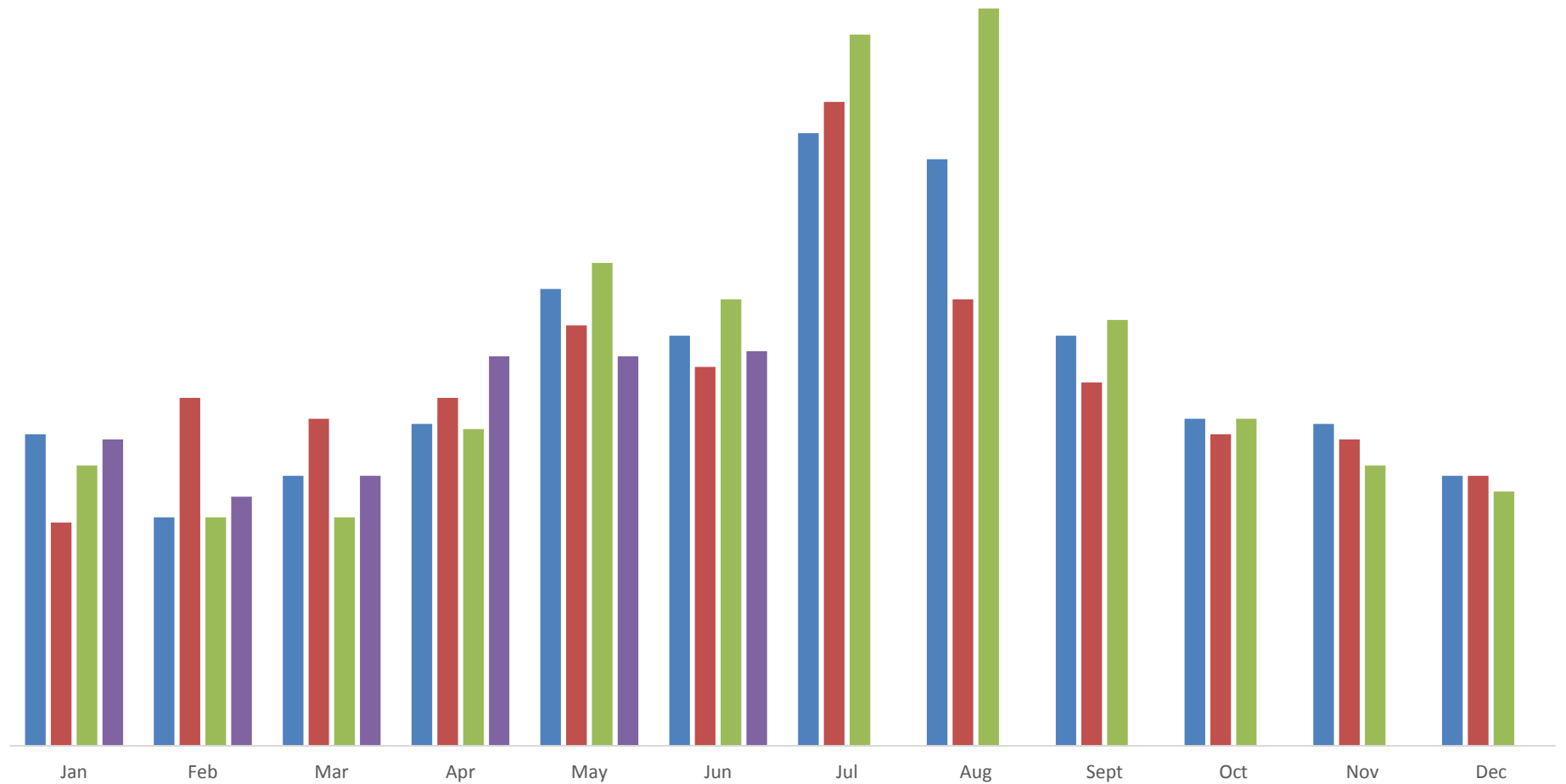
Incident by Day of the Week and Year

■ 2012 ■ 2013 ■ 2014 ■ 2015



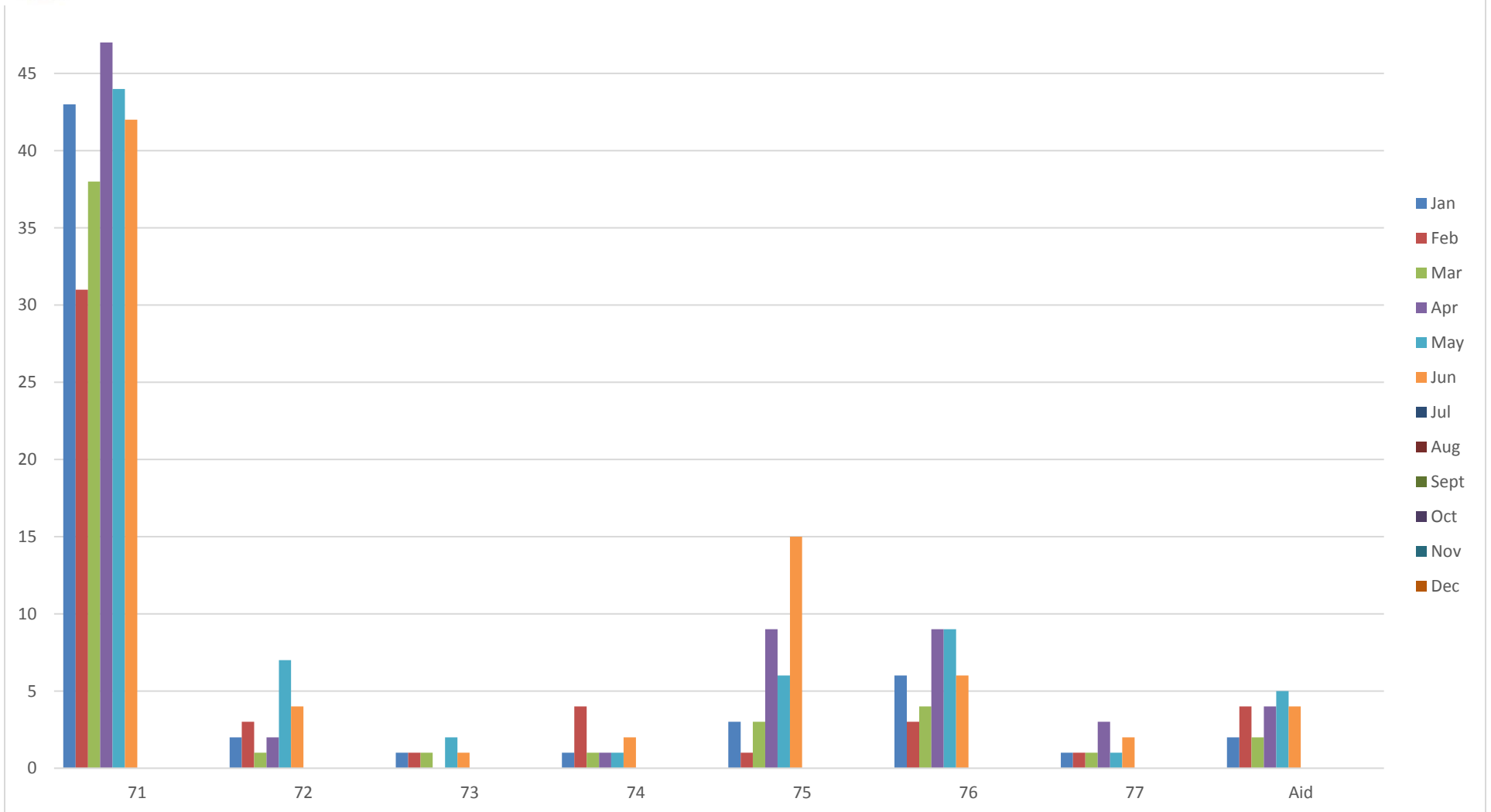
Total Incidents Per Month

■ 2013 ■ 2014 ■ 2015 ■ 2016





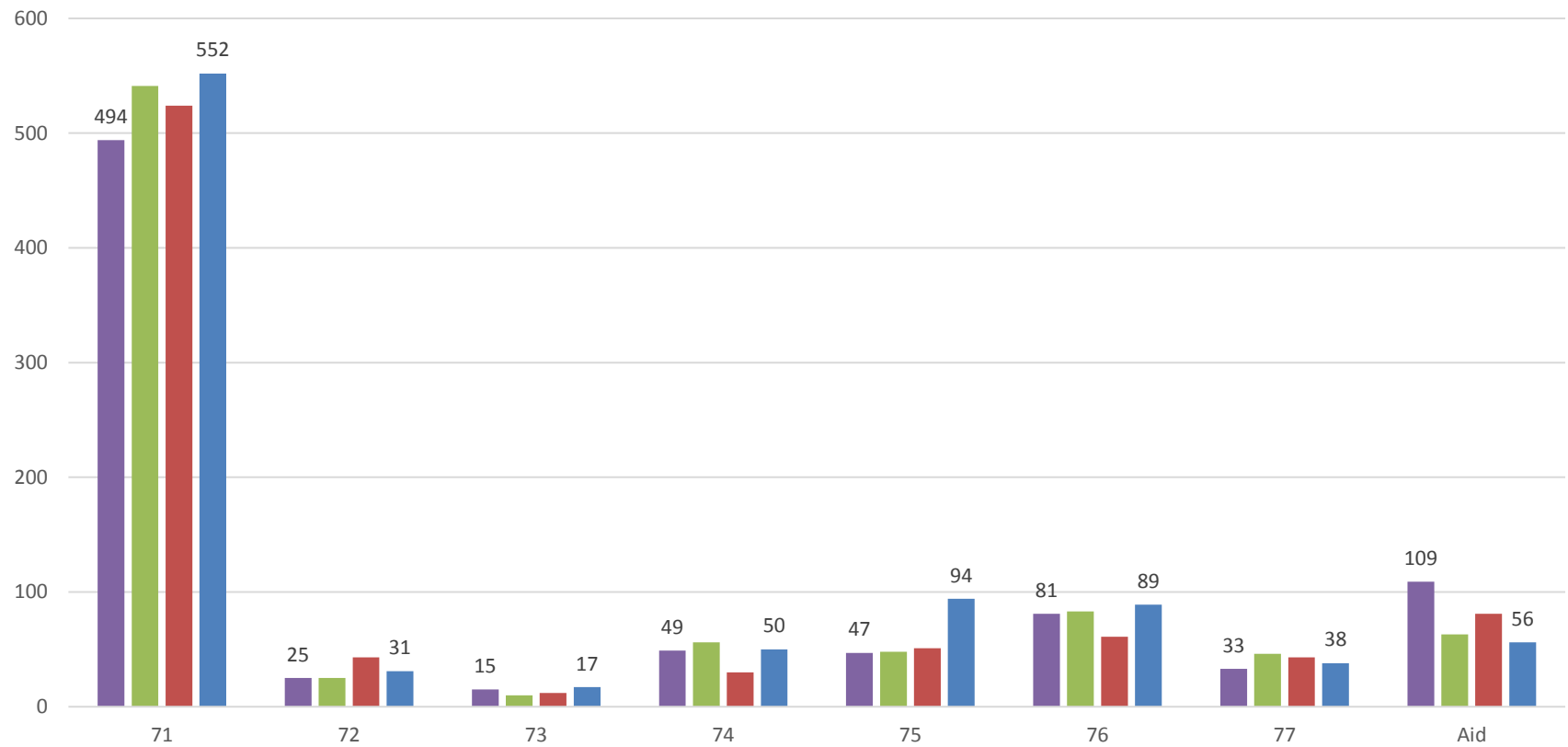
Incident by First Due Area 2016





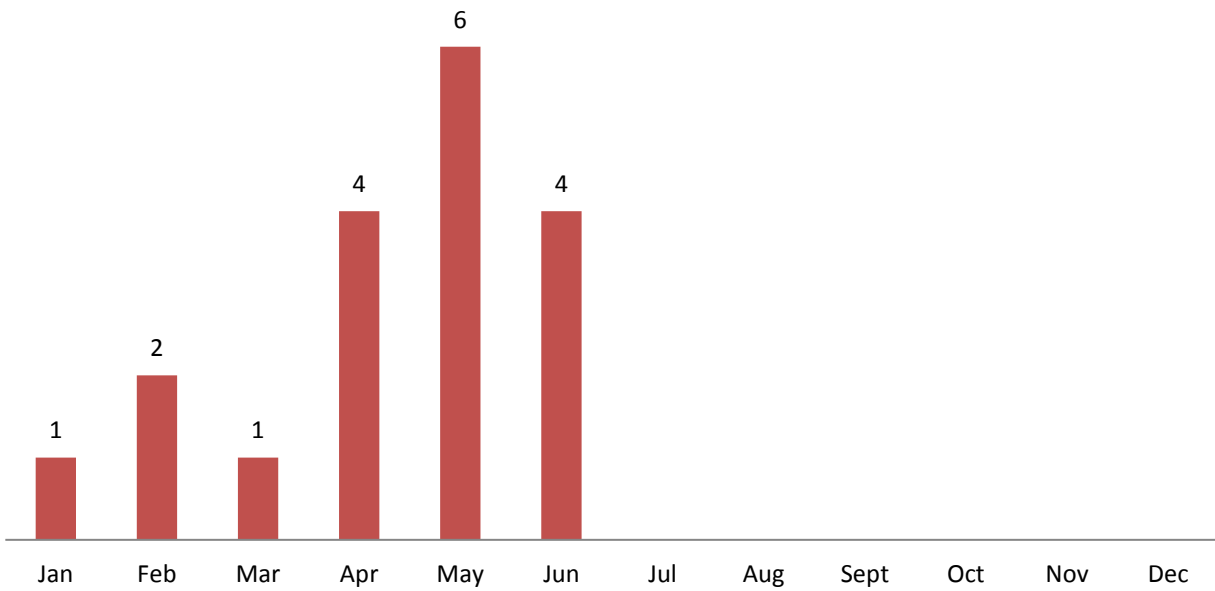
Incidents By Year First Due Area

2012 2013 2014 2015

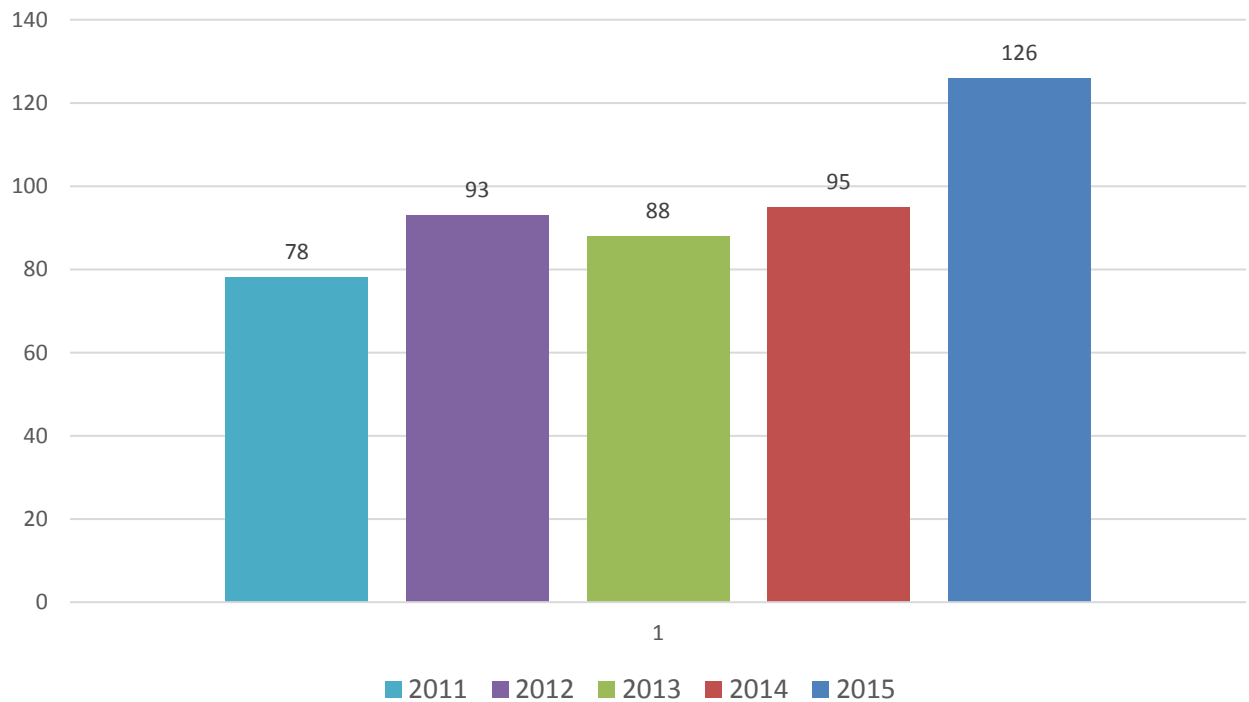




2016 Overlapping Incidents

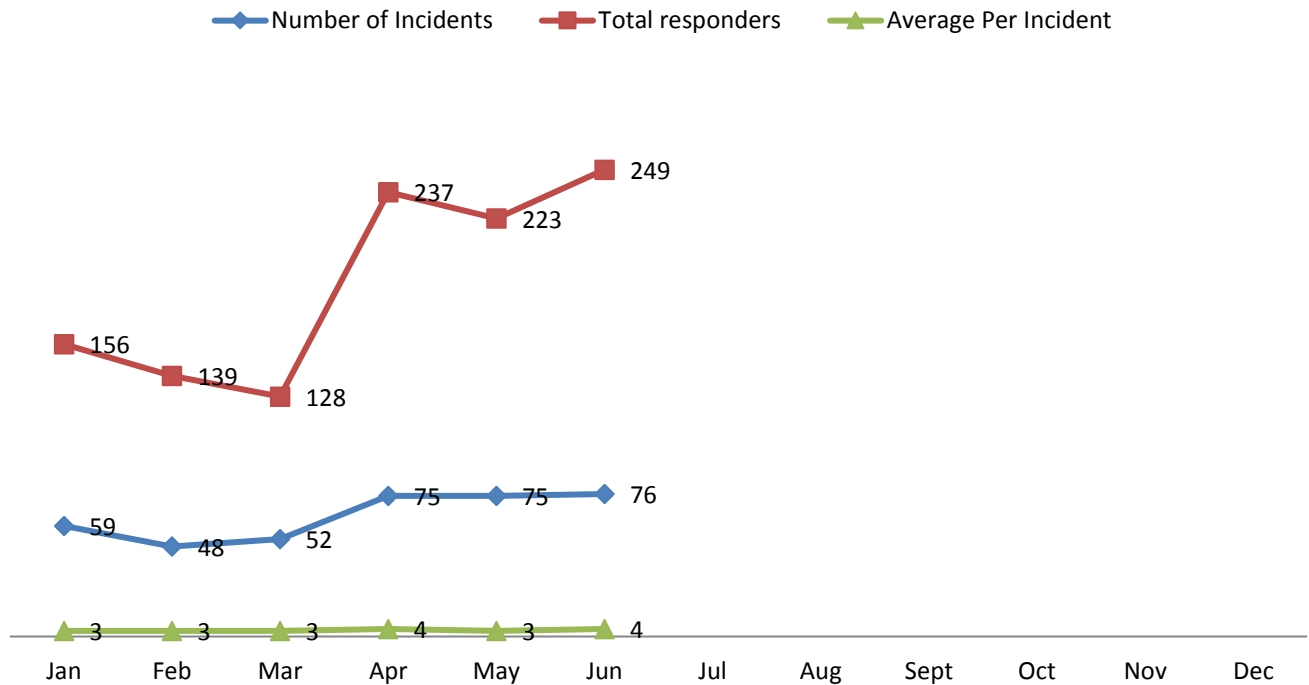


Overlapping Incidents By Year

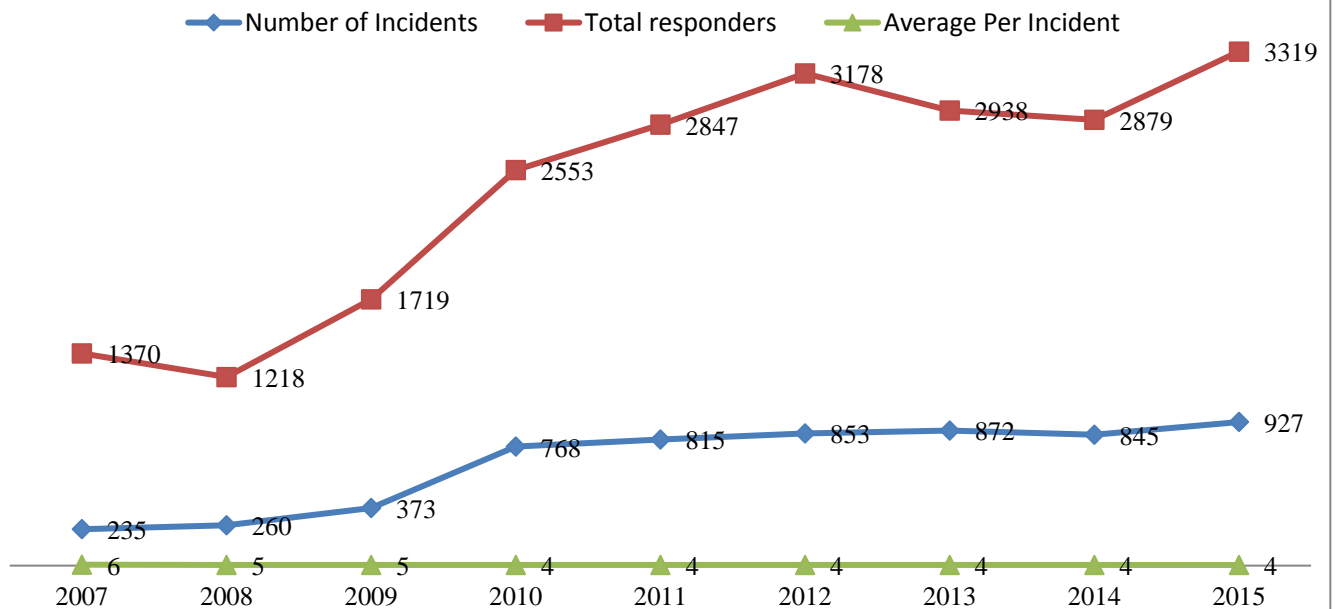




Average Turnout Per Incident 2016

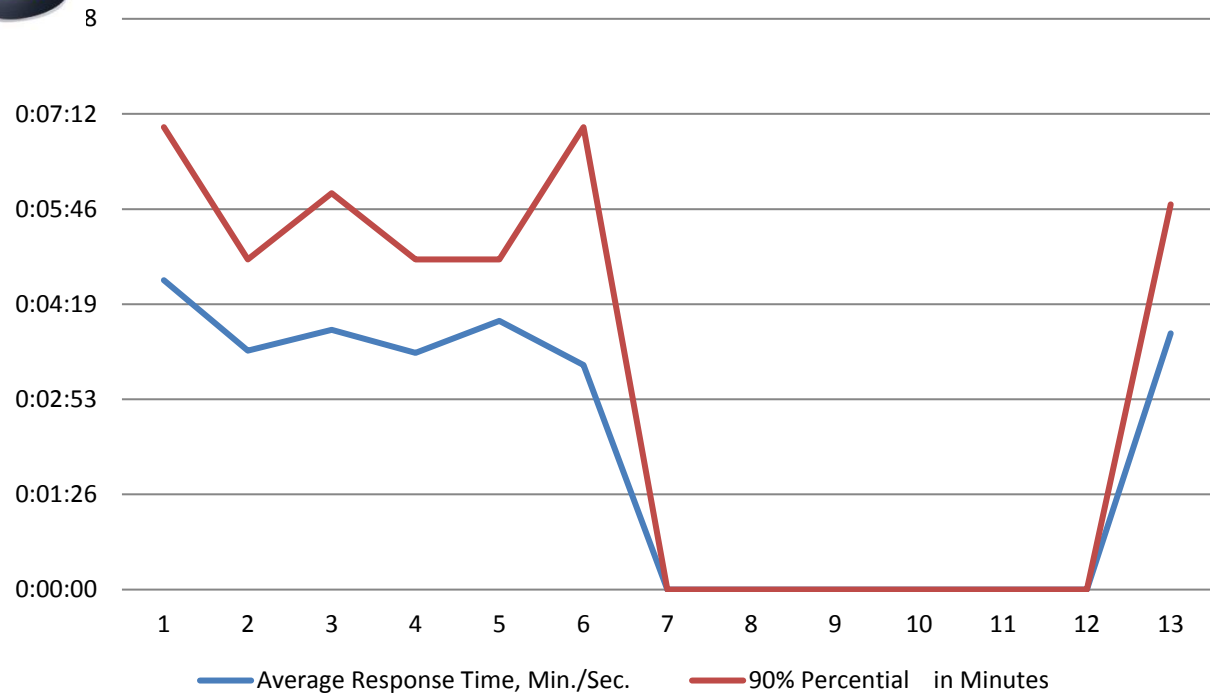


Average Turnout Per Incident By Year

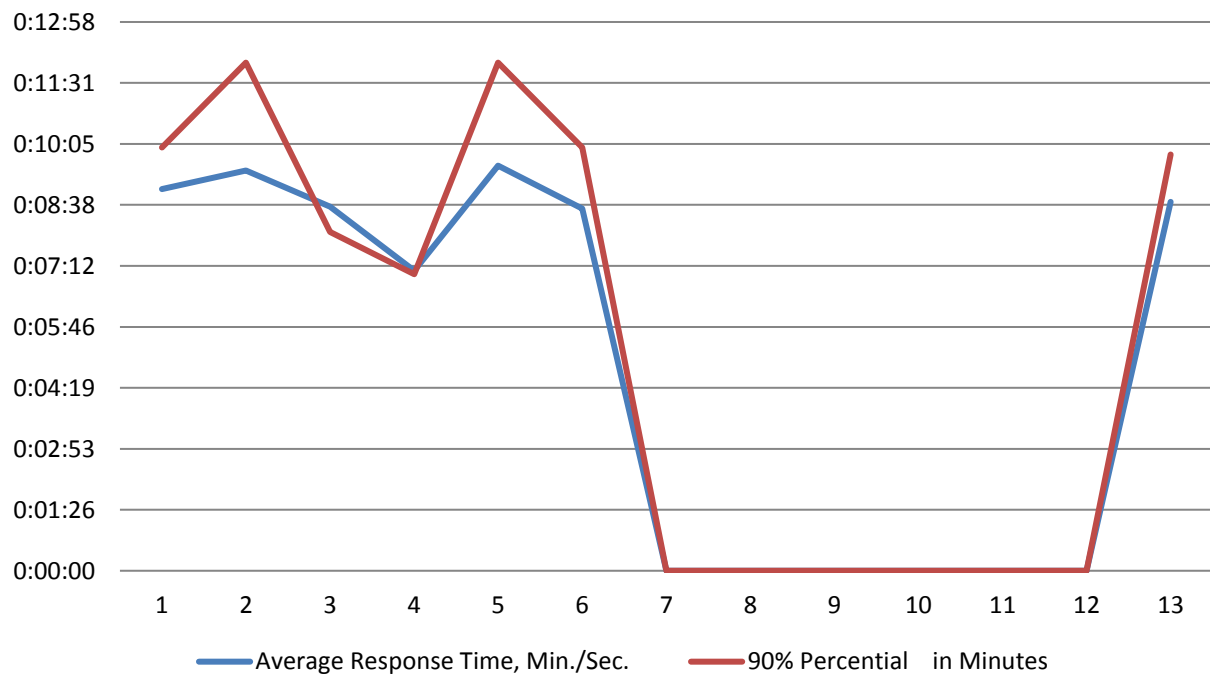




Station 71

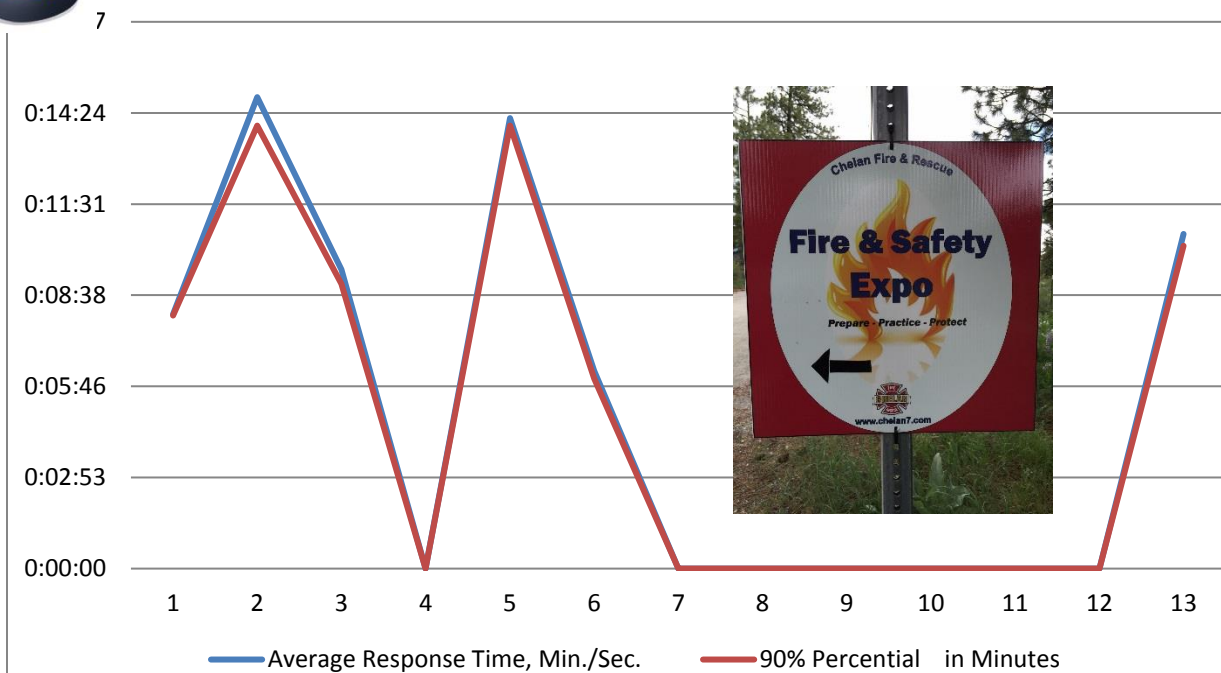


Station 72

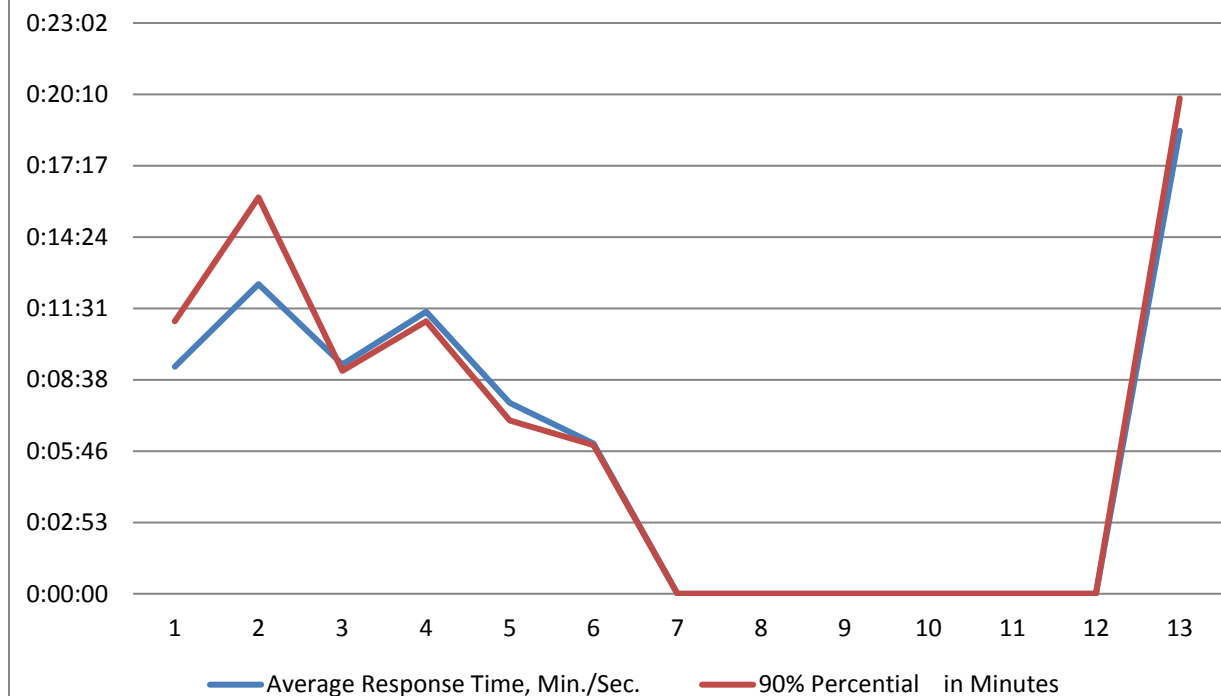




Station 73

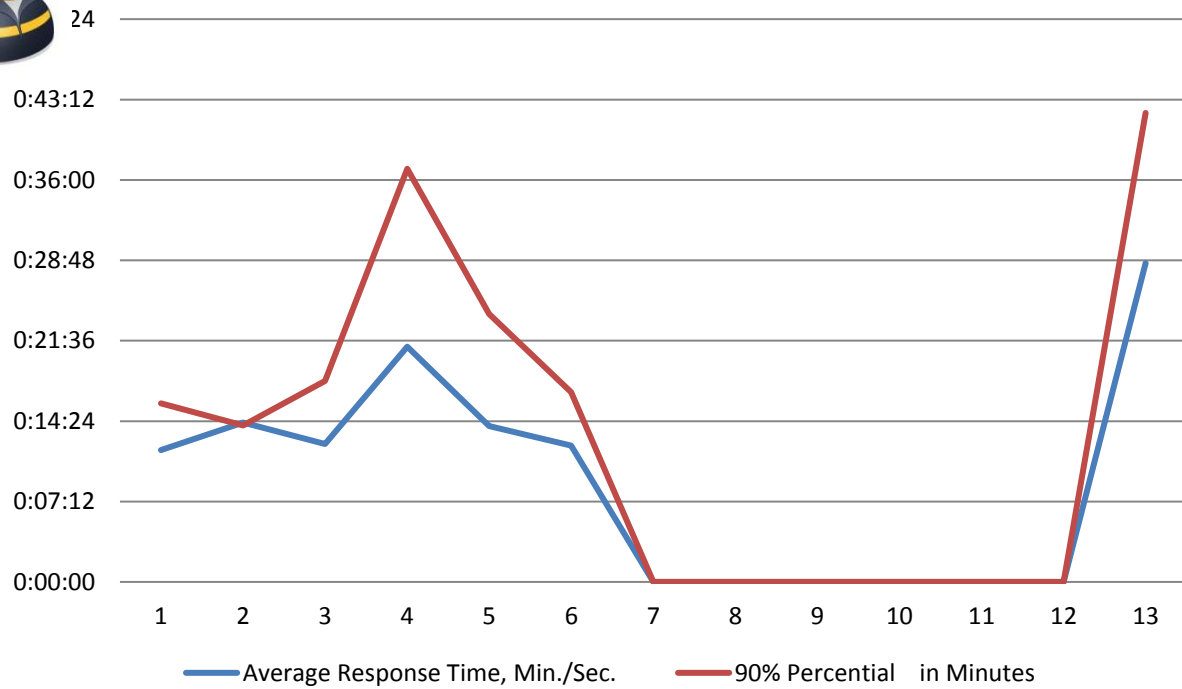


Station 74

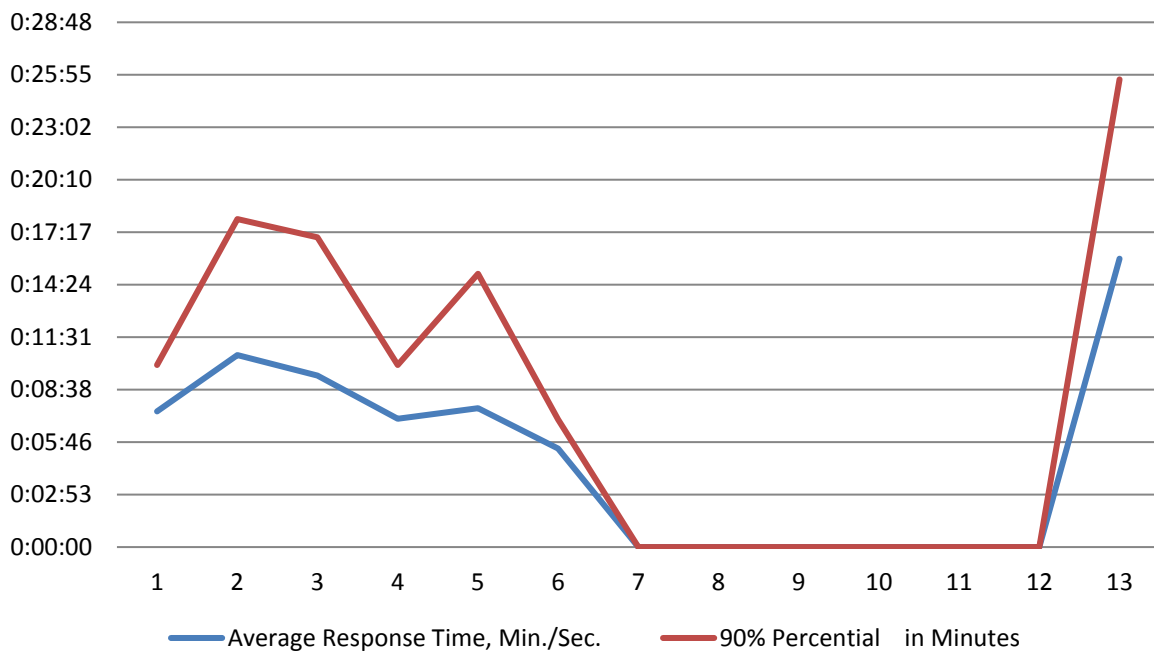




Station 75

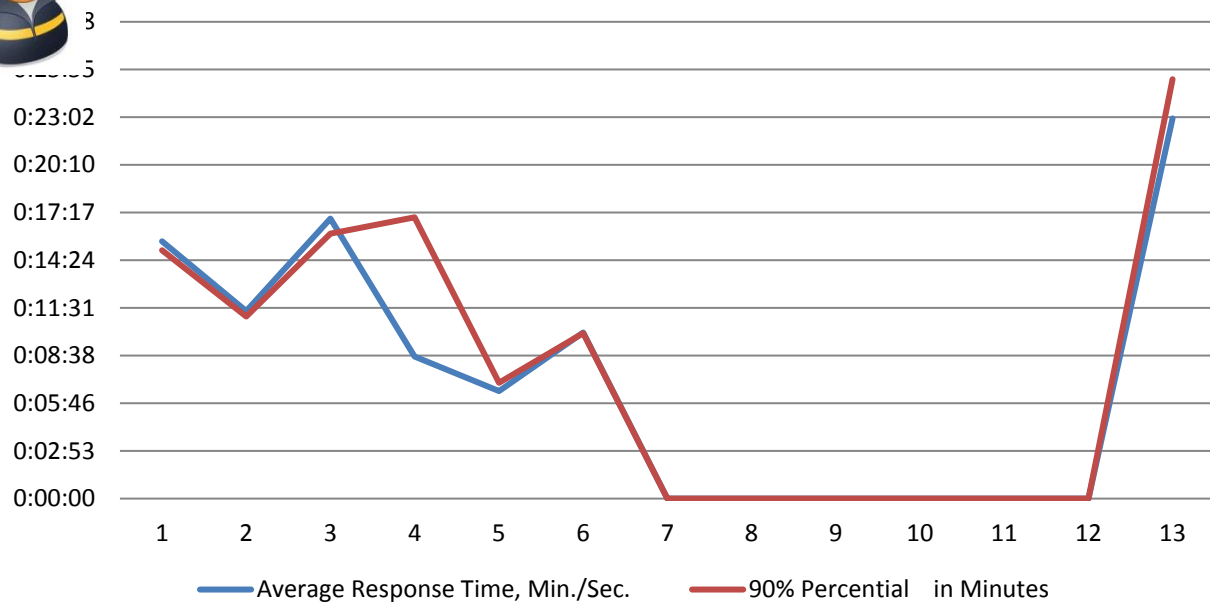


Fire Zone 76

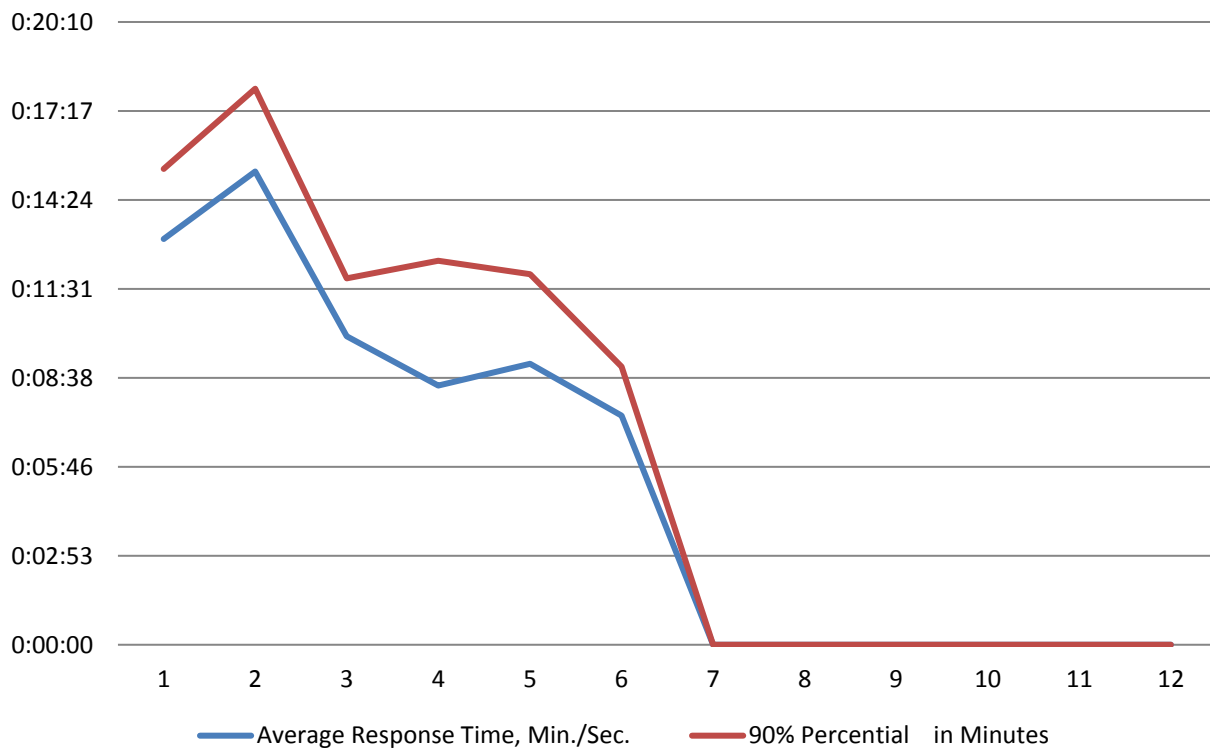




Fire Zone 77

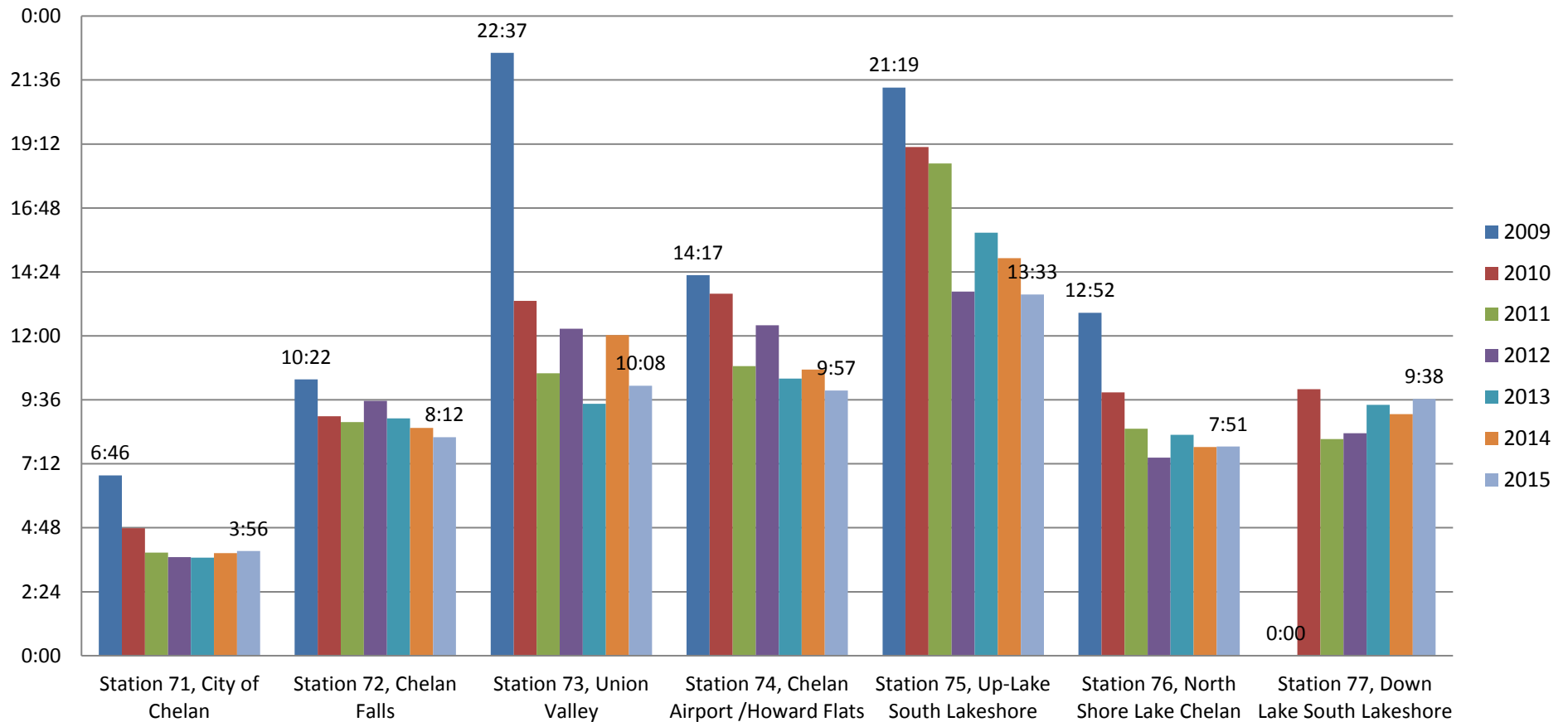


District Over-All Average





Average Emergency Response Times In First Due Areas





Public Service Announcements:

January:

- None

February:

- Safe kids Top Fire Safe Tips for winter

March:

- Wildland Fire Safety
- Spring Safety Tips

April:

- Protect Your Home – Wildfire & Risk
- Escape Planning
- “Are you Ready” for kids

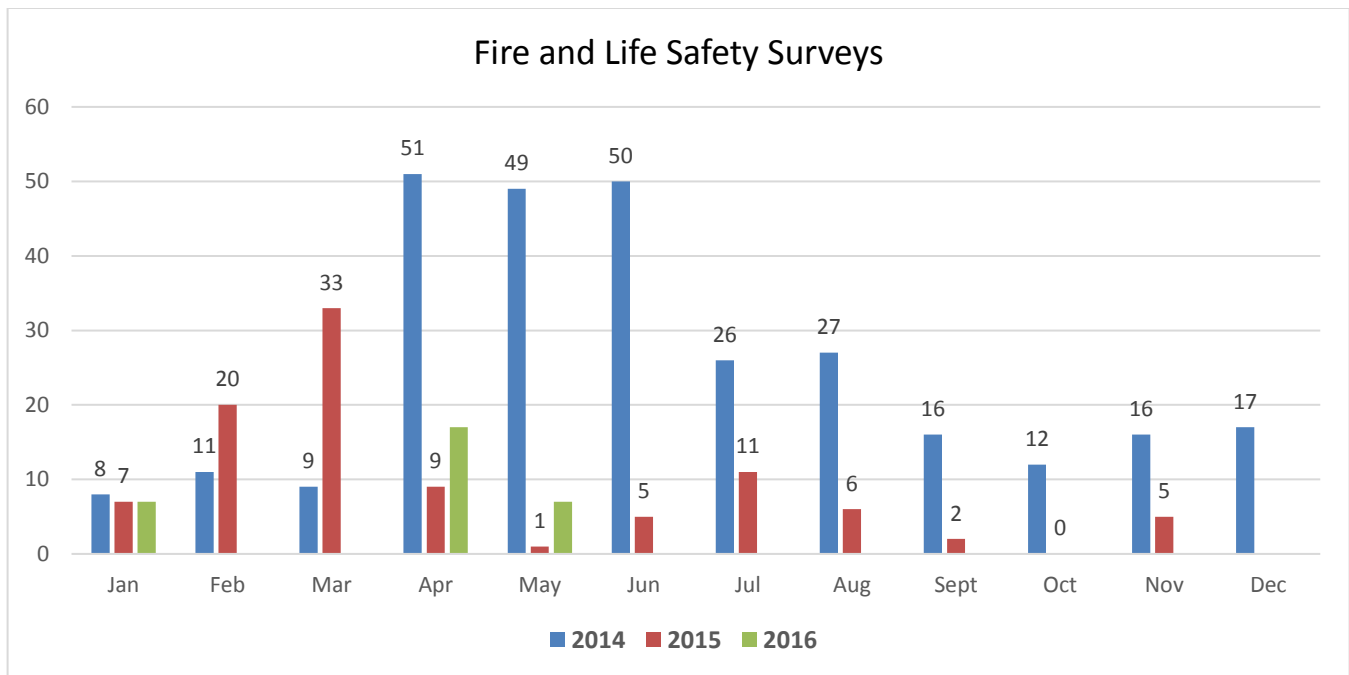
May:

- Safer in 7
- Boating Safety

June:

- Heat Stroke
- Hot Summer Days safety information
- Facts - Snakes

July:**August:****September:****October:****November:****December:**



Chelan Fire and Rescue Recruit Class 2016-01

Significant Calls:

Hang glider Crash: 07/05/2016, around 1357 hours Command 7, Rescue 71, Brush 71 and Medic 3171 responded to 600 East Iowa Street for hang glider crash. Personnel disentangled the pilot from the hang glider; he was treated and transported to Lake Chelan Community Hospital with non-life threatening injuries.

Drowning: 07/03/2016, around 1229 hours Brush 71, Rescue 71 and Medic 3171 responded to 2100 West Terrace Avenue for a possible drowning. Units on scene found a paddle boarder in distress that had been assisted back to the shore by a swimmer. The paddle boarder was treated and released at the scene.

Drowning: 07/02/2016 around 1906 hours Command 7, Rescue 71, Brush 71 and Medic 3171 responded to Lakeside Park for a possible drowning. Units on scene determined the call was for a lost child in the park, not in the water. The child was located and all units returned in service.

Brush Fire: 07/02/2016 around 1635 hours Command 7 and Brush 79 responded auto-aid with Entiat Fire Department to Mile Post 2 Stayman Flats Road for a brush fire. First unit on scene reported a 50 x 100 foot fire contained between the road and the water with civilians attempting to extinguish the fire. Brush 79 was able to make a rapid knock down of the fire. Fire was turned over to Entiat Fire units upon their arrival for mop up. Cause of the fire appears to be a BBQ that was knocked over.

Structure Fire: 07/01/2016 around 1916 hours Command 7, Brush 71 and Tender 75 responded auto-aid with Entiat Fire Department to 17800 Entiat River Road for a residential structure fire. First Entiat Fire Unit on scene reported a fully involved structure fire, defensive operations focused on containment and exposure coverage. Command 7 assisted with command and control while the Brush 71 crew was assigned to fire attack. Tender 75 provided water support. Cause of the fire was reported to be a candle left burning and unattended in the house.

Structure Fire with Brush Fire Extension: 06/27/2016 around 1949 hours Command 7, 75-01, Engine 71, 72, Tender 74, 75 and Medic 3171 responded to 18800 South Lakeshore Road for a residential structure fire. Upon 75-01 arrival, he found two neighbors down at the house attempting to contain the fire. 75-01 reported a fully involved structure, defensive fire operations, established command, requested PUD and a 2nd Alarm. 2nd Alarm units included: Command 5, Engine 73, 52, Tender 52, Support 71, USFS Personnel, and DNR Personnel. Engine 71 made the initial attack using their master stream to slow the brush fire around the house so that personnel had time to overhaul hose line from South Lakeshore Road down the embankment to contain the fire, extinguish one exposure and protect several others. As PUD was cutting the power to the house they reported smoke down lake, which turned out to be a brush fire started from embers from the house fire. 2nd Alarm resources were arriving and were assigned to the brush fire. The brush fire was quickly contained after a fire attack from South Lakeshore Road knocked down the head of the fire. The rest of the fire was contained between South Lakeshore Road and the water. The up lake end of the fire was burning into the green and a small stream. A private citizen attempted to assist from the lake in his boat by spraying water from the lakeside. His attempts were unproductive as the water stream barely reached the shoreline. USFS and DNR personnel handled mopping up the fire. Cause of the fire is undetermined.

Commercial Fire Response: 06/16/2016 around 1528 hours Engine 71 responded to 215 Webster Avenue for an automatic fire alarm. Upon arrival, personnel entered the building and found light smoke and the smell of burning electrical. Engine 71 up-graded the alarm to a full Commercial Fire Response that brought Command 7, Engine 72, 73, Tender 71, Ladder 71 to the incident. Personnel checked the building and located a burnt motor in a HVAC unit.